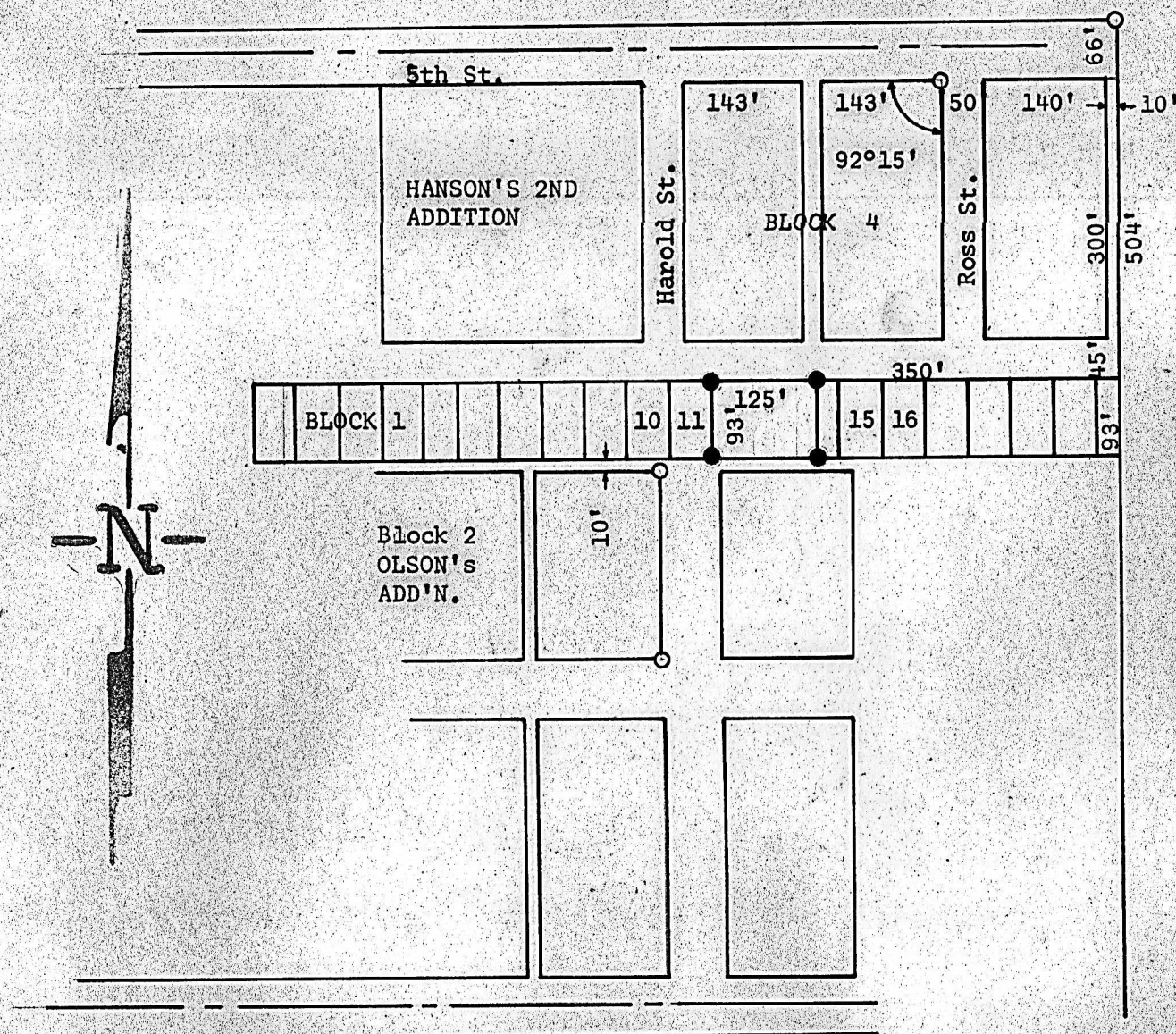


SURVEY LOTS 12, 13 & W 1/2 14
BLOCK 1, HANSON'S 2ND. ADDITION
MARQUETTE, KANSAS



○ Pins found this Survey

● Pins set this Survey

State of Kansas)
County of McPherson) SS

I, Francis Rankin, County Engineer of McPherson County, Kansas, do hereby certify that under my supervision a survey was made of Lots 12, 13 and West 1/2 14, Block 1, Hanson's second addition to the City of Marquette, Kansas and the above plat is a true exhibit of said survey as far as it is known to me.

Survey called for by Mrs. Carl Danielson

Signed this 28 day March 1966

F. R. Rankin
County Engineer
McPherson, Kansas



MICROFILM