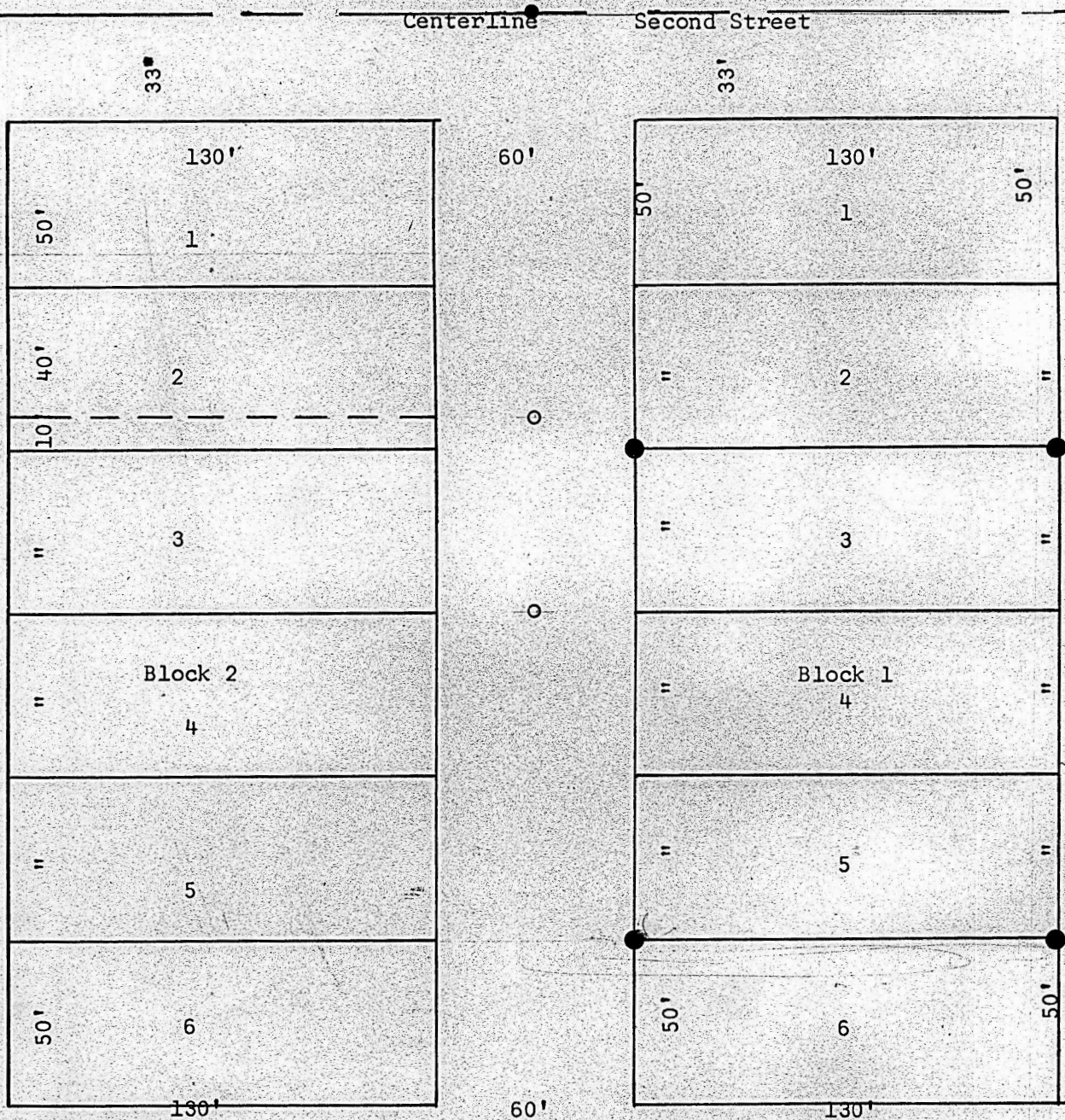


A Survey of Lots 3, 4, & 5 of Block 1
 Fosters Addition
 City of Marquette, Kansas



- Pins set Previous Survey
- Pins set this Survey

State of Kansas)
 County of McPherson) SS

I, F. R. Rankin, County Engineer of McPherson, Kansas, do hereby certify that under my supervision a survey was made of Lot 3, 4 & 5 of Block 1, Fosters Addition to the city of Marquette, Kansas, and the above plat is a true exhibit of said survey as far as it is known to me.

Survey called for by Donald Erickson

Signed this 30 day of August 1967

F. R. Rankin
 F. R. Rankin
 County Engineer
 McPherson, Kansas

799

PROFESSIONAL ENGINEER

MICROFILM