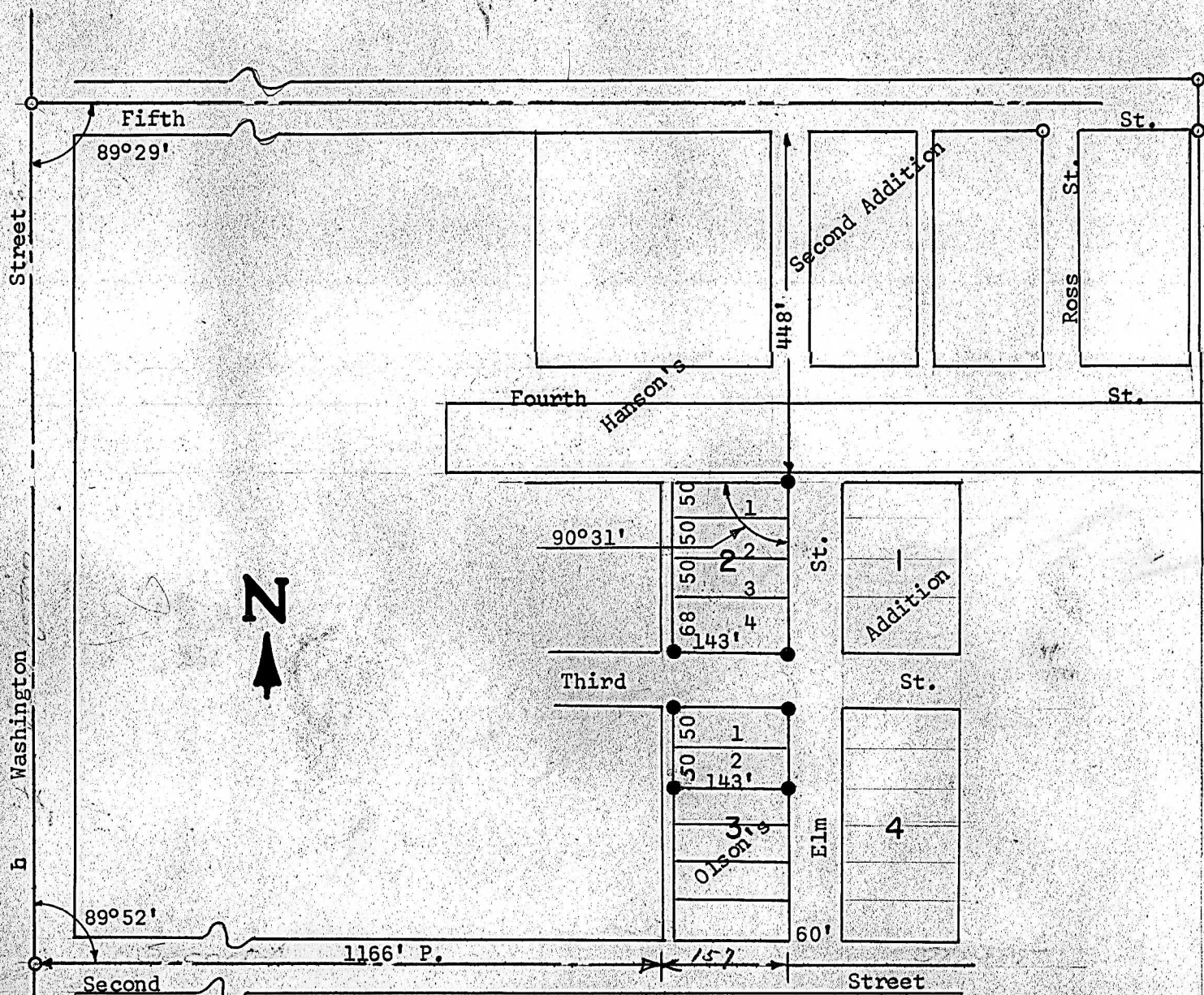


LOTS 1,2,3 & 4, Block 2
 Lots 1 & 2, Block 3
 OLSON'S ADDITION
 CITY OF MARQUETTE



- Pins Found this Survey
- Pins Set this Survey

State of Kansas)
 County of McPherson) SS

I, Francis R. Rankin, County Engineer of McPherson County, Kansas do hereby certify that under my supervision a survey was made of Lots 1,2,3 and 4, Block and Lots 1 and 2 of Block 3, Olson's Addition to the City of Marquette, Kansas and the above plat is a true exhibit of said survey as far as it is known to me.

Survey called for by Allmon

Signed this 27 dya September, 1965

Francis R. Rankin
 County Engineer
 McPherson, Kansas



MICROFILM