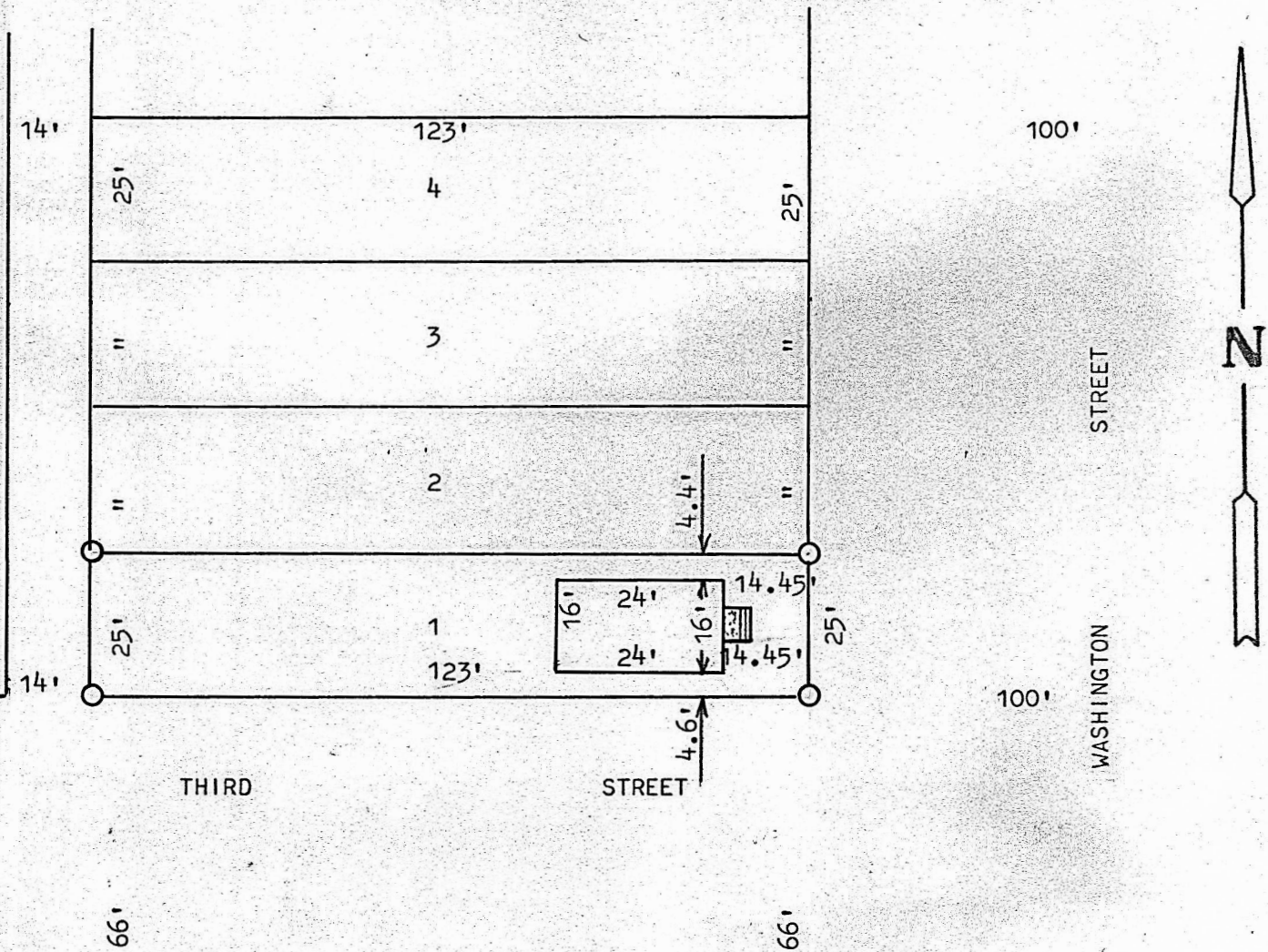


A SURVEY OF LOT 1, BLOCK 13
ORIGINAL TOWNSITE, MARQUETTE
KANSAS:



○ PINS FOUND OR SET THIS SURVEY

STATE OF KANSAS)
COUNTY OF MCPHERSON) SS

I, FRANCIS RANKIN, PROFESSIONAL ENGINEER OF THE STATE OF KANSAS
DO HEREBY CERTIFY THAT UNDER MY SUPERVISION A SURVEY WAS MADE OF
LOT 1, BLOCK 13, ORIGINAL TOWNSITE, TO THE CITY OF MARQUETTE, KANSAS
AND THAT THE ABOVE PLAT IS A TRUE EXHIBIT OF SAID SURVEY AS FAR AS
IT IS KNOWN TO ME.

SURVEY CALLED FOR BY SOUTHWESTERN BELL TELE. (GIDDINGS)

SIGNED THIS 26 DAY OF FEBRUARY, 1968

Francis Rankin
FRANCIS RANKIN
PROFESSIONAL ENGINEER
MCPHERSON, KANSAS



MICROFILM 1