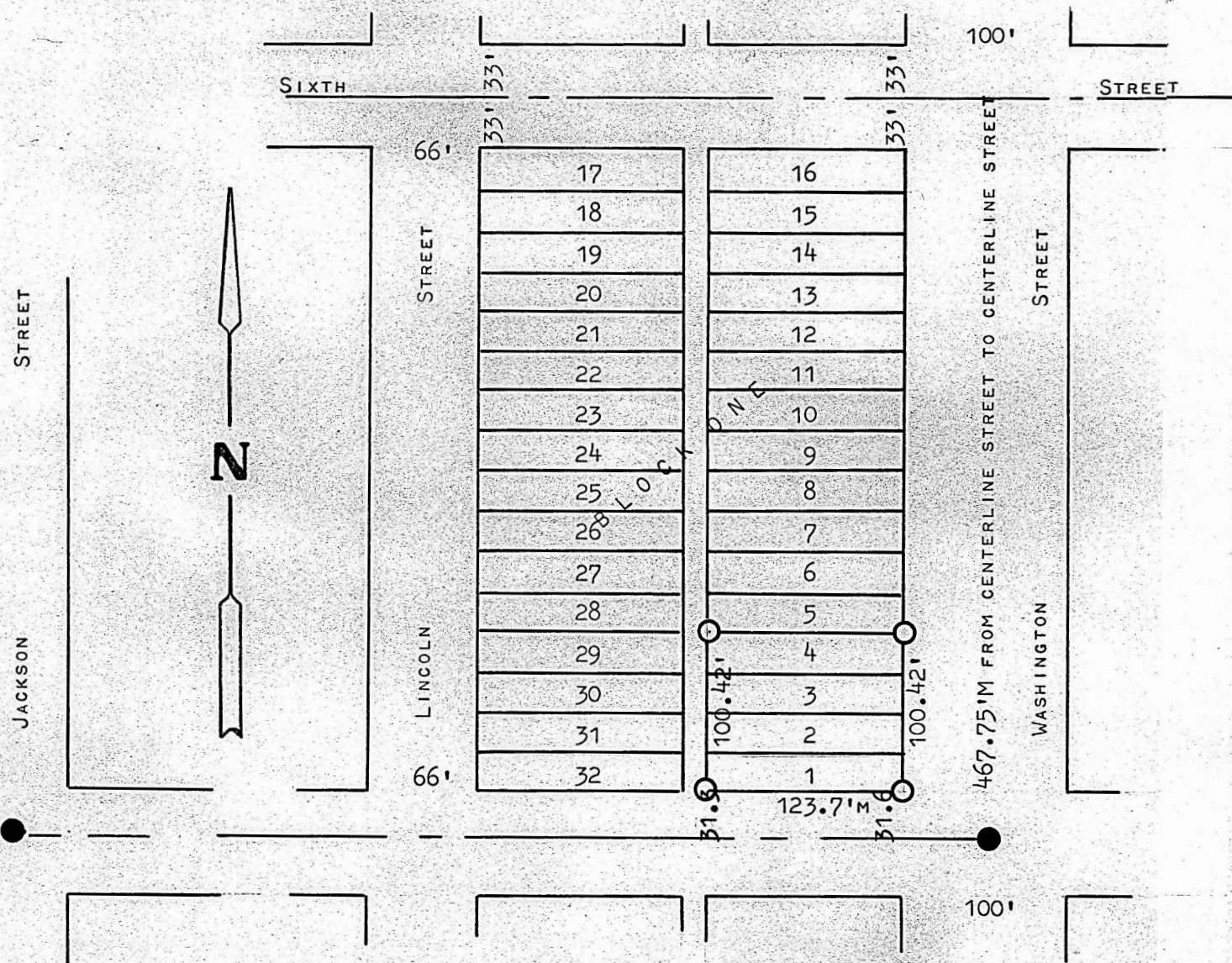


Block 3, Lots 1, 2, 3, & 4

ORIGINAL TOWN SITE

MARQUETTE, KANSAS



- PINS SET THIS SURVEY
- PINS FOUND THIS SURVEY

STATE OF KANSAS)
COUNTY OF McPHERSON)^{SS}

I, FRANCIS RANDIN, COUNTY ENGINEER OF McPHERSON, KANSAS DO HEREBY CERTIFY THAT UNDER MY SUPERVISION A SURVEY WAS MADE OF LOTS 1, 2, 3 & 4 OF BLOCK 3, ORIGINAL TOWN SITE TO THE CITY OF MARQUETTE, KANSAS, AND THE ABOVE PLAT IS A TRUE EXHIBIT OF SAID SURVEY AS FAR AS IT IS KNOWN TO ME.

SURVEY CALLED FOR BY LINCOLN BECKER.

SIGNED THIS 23 DAY OF JUNE, 1967.

Francis Rankin
FRANCIS RANKIN
COUNTY ENGINEER
McPHERSON, KANSAS



MICROFILM