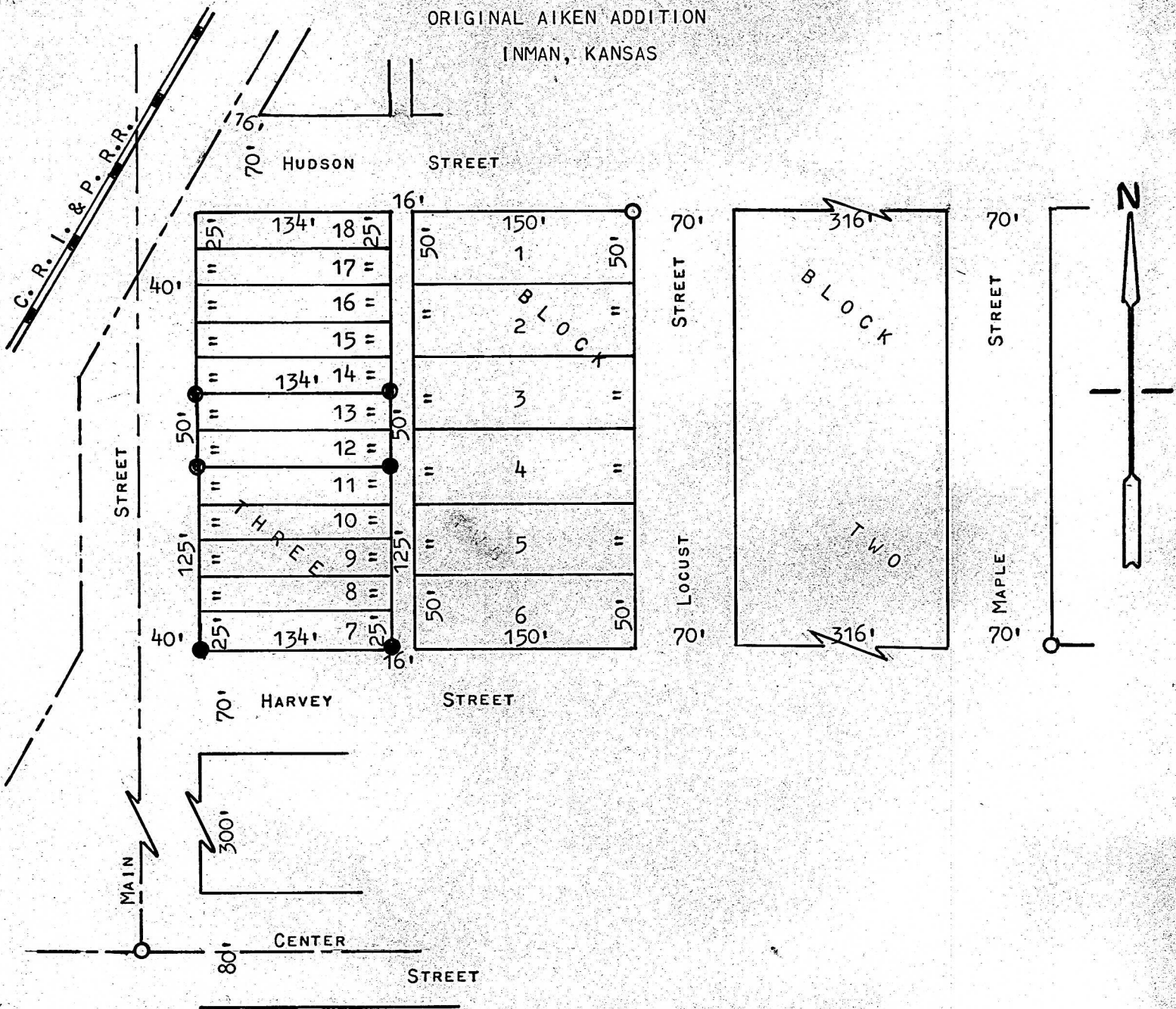


A SURVEY IN BLOCK 3
ORIGINAL AIKEN ADDITION
INMAN, KANSAS



○ PINS FOUND
● PINS SET

STATE OF KANSAS)
COUNTY OF McPHERSON) ss

I, MELVIN FERGUSON, COUNTY ENGINEER OF McPHERSON COUNTY, KANSAS,
DO HEREBY CERTIFY THAT UNDER MY SUPERVISION A SURVEY WAS MADE OF
LOTS 7 THRU 13, BLOCK 3, ORIGINAL AIKEN ADDITION TO THE CITY OF
INMAN, KANSAS, AND THAT THE ABOVE PLAT IS A TRUE EXHIBIT OF SAID
SURVEY AS FAR AS IT IS KNOWN TO ME.

SURVEY CALLED FOR BY MILFRED PENNER.

SIGNED ON THIS 2nd DAY OF MARCH, 1975.

Melvin Ferguson
MELVIN FERGUSON
COUNTY ENGINEER
McPHERSON COUNTY, KANSAS

