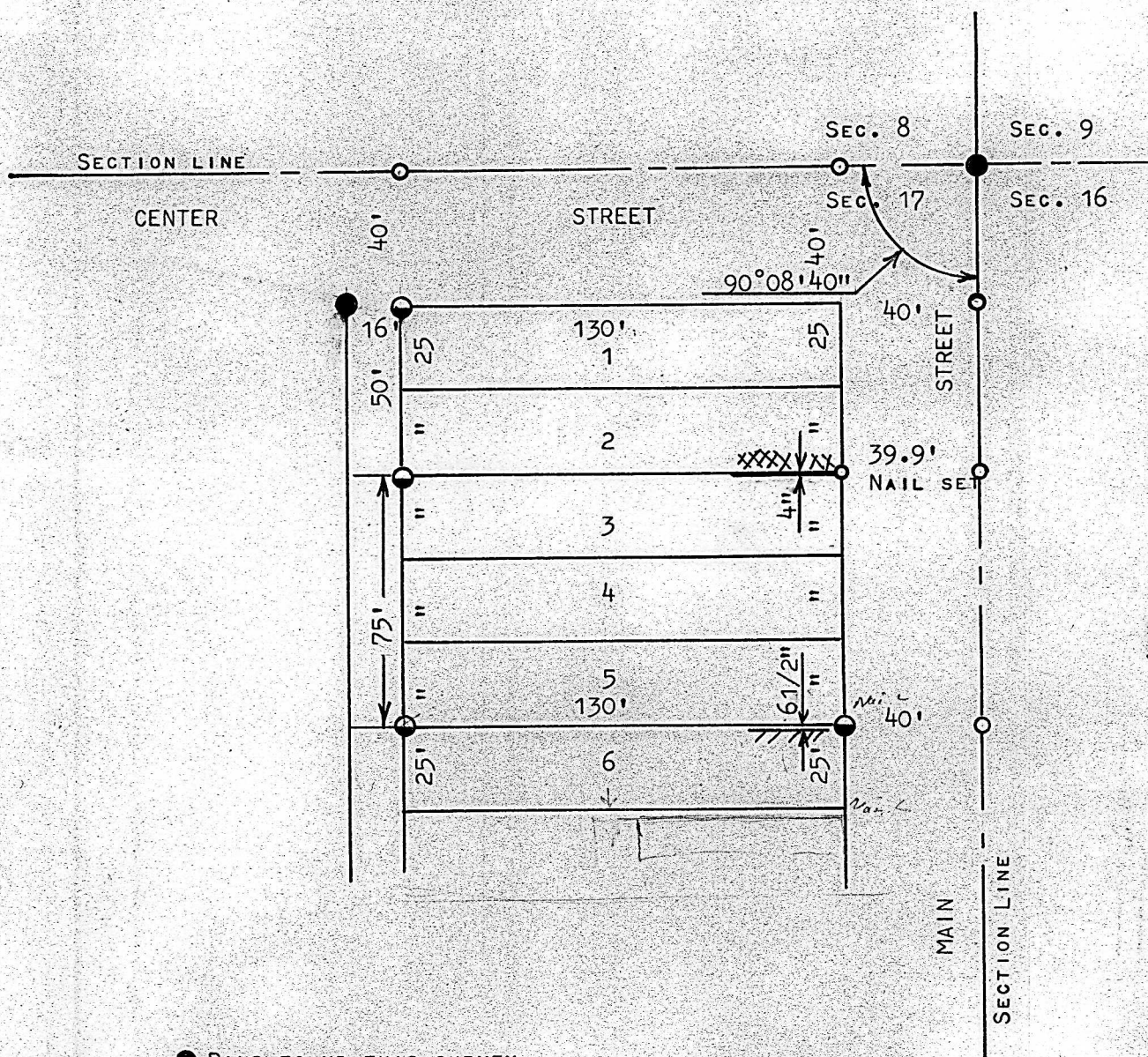


SURVEY OF LOTS 3, 4, & 5, BLOCK 10
ORIGINAL TOWN SITE, INMAN, KANSAS



- PINS FOUND THIS SURVEY
- PINS SET THIS SURVEY
- NAILS SET THIS SURVEY

STATE OF KANSAS)
COUNTY OF MCPHERSON)*SS

I, FRANCIS RANKIN, PROFESSIONAL ENGINEER OF THE STATE OF KANSAS,
DO HEREBY CERTIFY THAT UNDER MY SUPERVISION A SURVEY WAS MADE
OF LOTS 3, 4 & 5, ORIGINAL TOWN SITE, TO THE CITY OF INMAN,
KANSAS, AND THAT THE ACCOMPANYING PLAT IS A TRUE TRUE EXHIBIT
OF SAID SURVEY AS FAR AS IT IS KNOWN TO ME.

SIGNED THIS 7 DAY OF MAY, 1968

Francis Rankin

FRANCIS RANKIN
PROFESSIONAL ENGINEER
MCPHERSON, KANSAS

