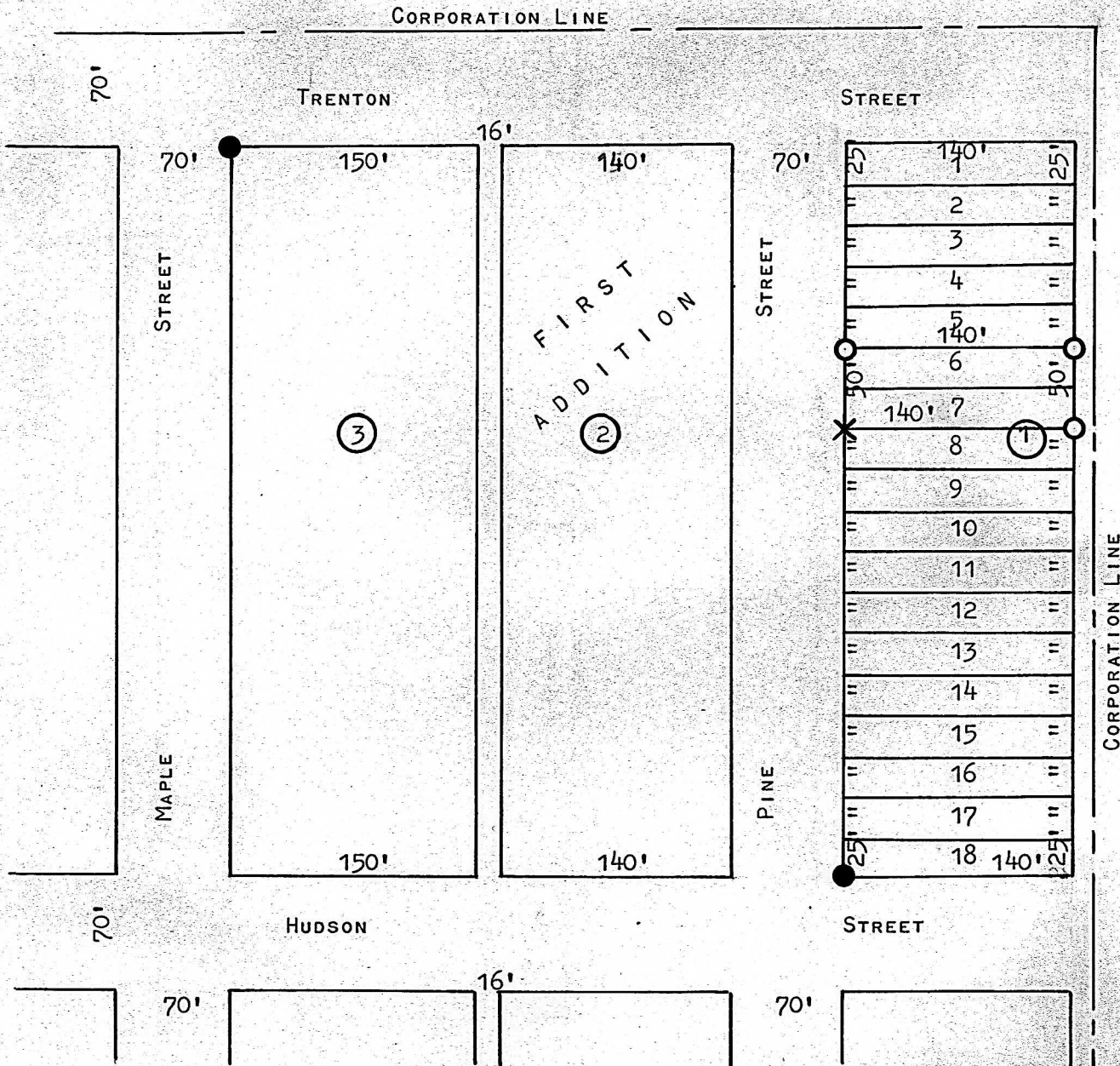


A SURVEY OF LOTS 6 & 7  
BLOCK 1 FIRST ADDITION  
INMAN, KANSAS

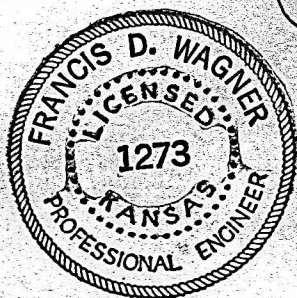


- PINS FOUND THIS SURVEY
- PINS SET THIS SURVEY
- ✕ PLACE IN CONCRETE THIS SURVEY

STATE OF KANSAS )  
COUNTY OF McPHERSON ) SS

I, FRANCIS D. WAGNER, COUNTY ENGINEER OF McPHERSON COUNTY, KANSAS  
DID CAUSE TO BE DONE ON THE 18TH DAY OF MAY, 1960, A SURVEY ALL OF  
LOT 6 AND ALL OF LOT 7, BLOCK 1, FIRST ADDITION TO THE CITY OF  
INMAN, COUNTY OF McPHERSON, KANSAS AND THAT THE ACCOMPANYING PLAT  
IS A TRUE EXHIBIT OF SAID SURVEY.

MAY 19, 1960



*Francis D. Wagner*  
FRANCIS D. WAGNER  
COUNTY ENGINEER  
McPHERSON COUNTY

MICROFILM