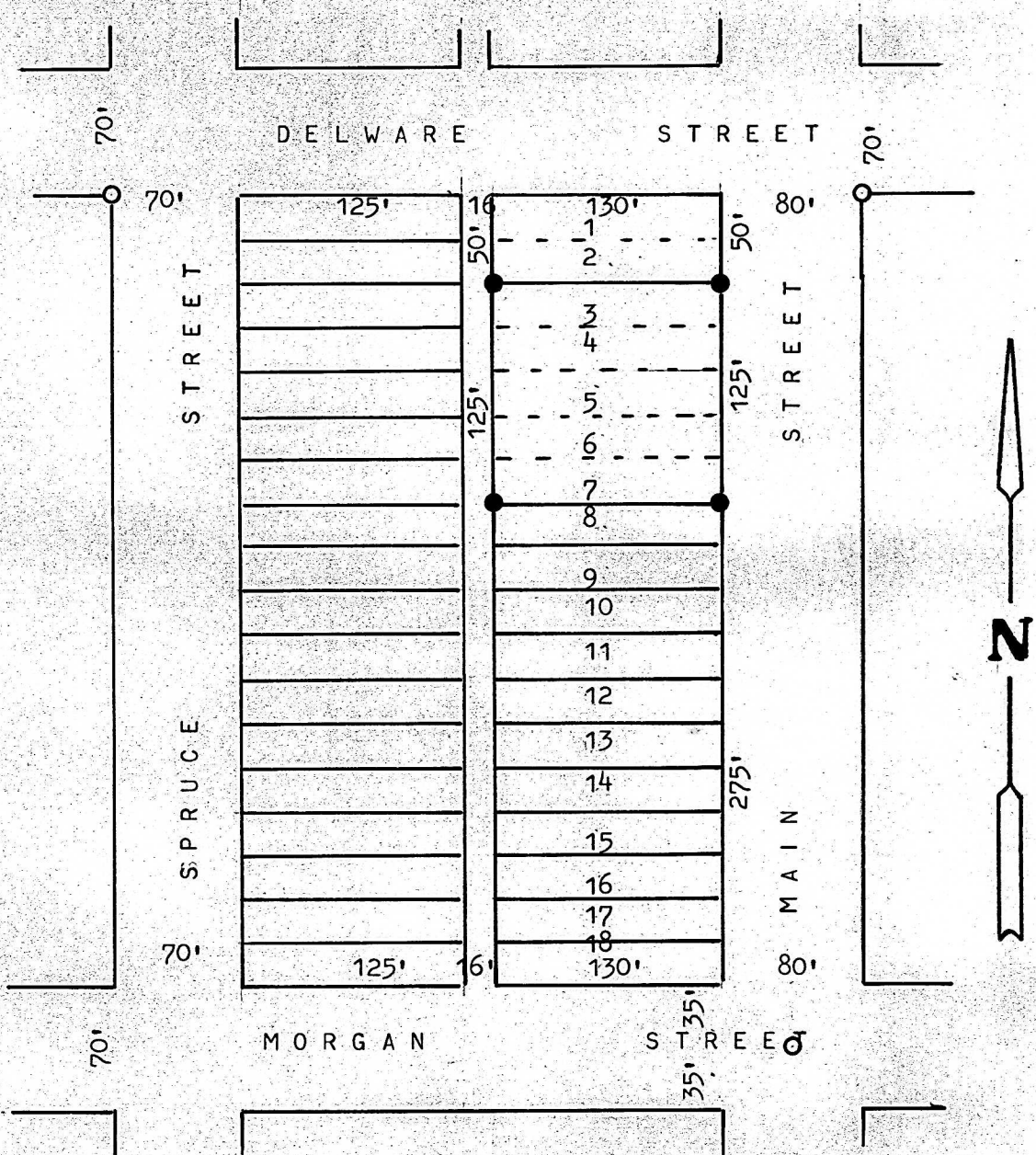


A SURVEY OF LOTS 3 THRU 7 INC. BLOCK 15, 1ST, ADDITION  
INMAN, KANSAS



- PINS SET THIS SURVEY
- PINS FOUND THIS SURVEY

STATE OF KANSAS )  
COUNTY OF MCPHERSON ) SS

I, MELVIN FERGUSON, PROFESSIONAL ENGINEER OF THE STATE OF KANSAS DO HEREBY CERTIFY THAT UNDER MY SUPERVISION A SURVEY WAS MADE OF LOTS 3 THRU 7 INC. BLOCK 15, FIRST ADDITION TO THE CITY OF INMAN, KANSAS, AND THAT THE ACCOMPANYING PLAT IS A TRUE EXHIBIT OF SAID SURVEY

SURVEY CALLED FOR BY ADOLYN BARTELS

SIGNED THIS 8<sup>th</sup> DAY OF SEPTEMBER, 1975

MELVIN FERGUSON  
PROFESSIONAL ENGINEER  
MCPHERSON, KANSAS

