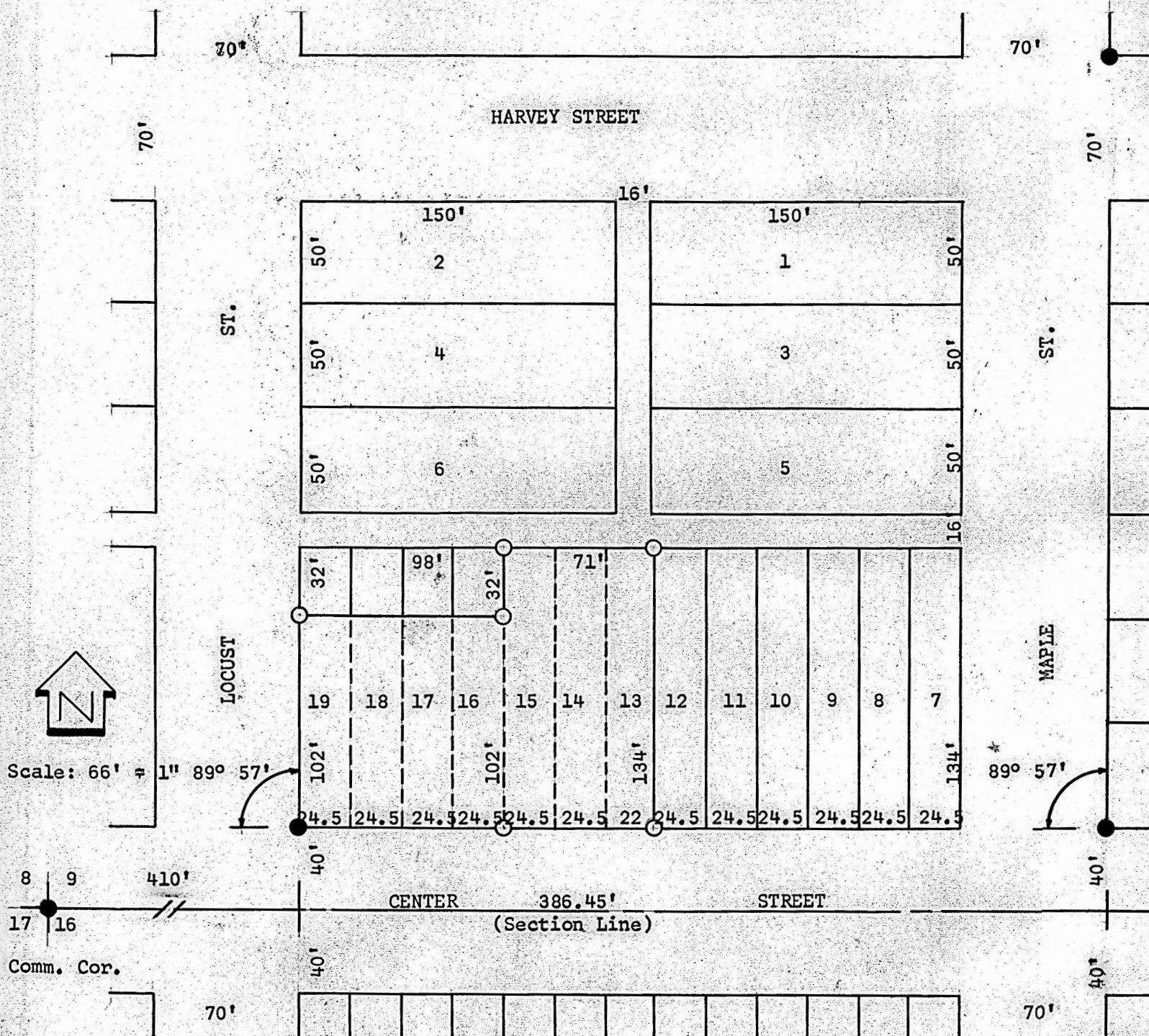


A SURVEY OF LOTS 13, 14, 15 and the SOUTH 102' of 16, 17, 18 & 19
BLOCK 6, ORIGINAL TOWN, INMAN, KANSAS



- Pins found this survey
- Pins set this survey

State of Kansas)
County of McPherson) SS

I, Francis Rankin, County Engineer of McPherson County, Kansas, do hereby certify that under my supervision a survey of Lots 13, 14, 15 and the South 102 feet of Lots 16, 17, 18 and 19, Block 6, Original Town to the City of Inman, Kansas has been made and that the above plat is a true exhibit of said survey as far as it is known to me.

Survey called for by G. H. Toews

Signed this 13th day of August 1964

Francis Rankin
County Engineer
McPherson, Kansas



MICROFILM