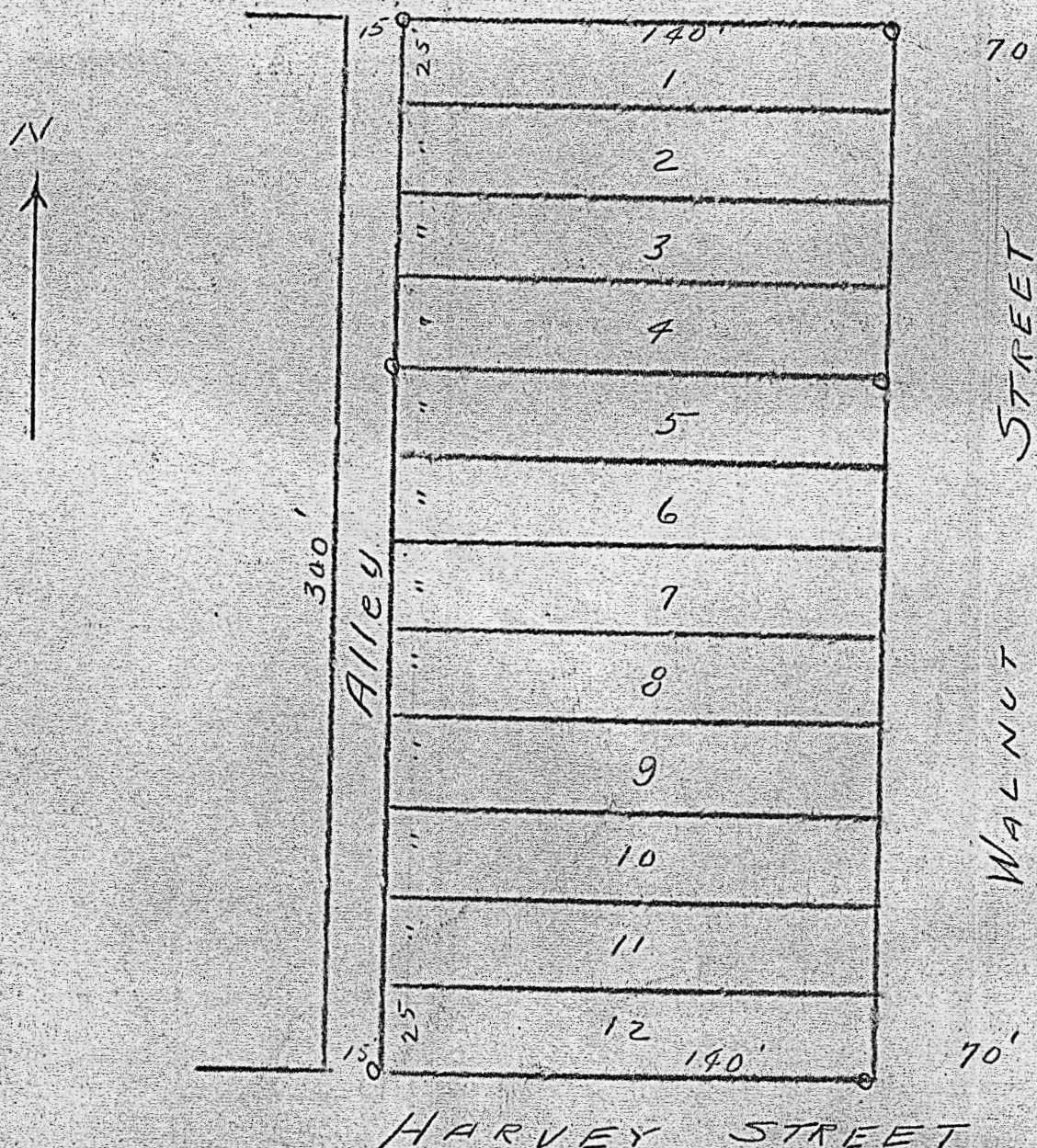


Block 1, Toeves Add. to City of Inman, Kansas.



State of Kansas, County of McPherson, ss.

I, G.D. Johnson, Licensed Civil Engineer of the State of Kansas, do hereby certify that I did on the 21st. day of July, 1952 survey Block 1, Toeves Addition to the City of Inman, Kansas and that accompanying plat is a true exhibit of said survey.

*G.D. Johnson*

MICROFILM