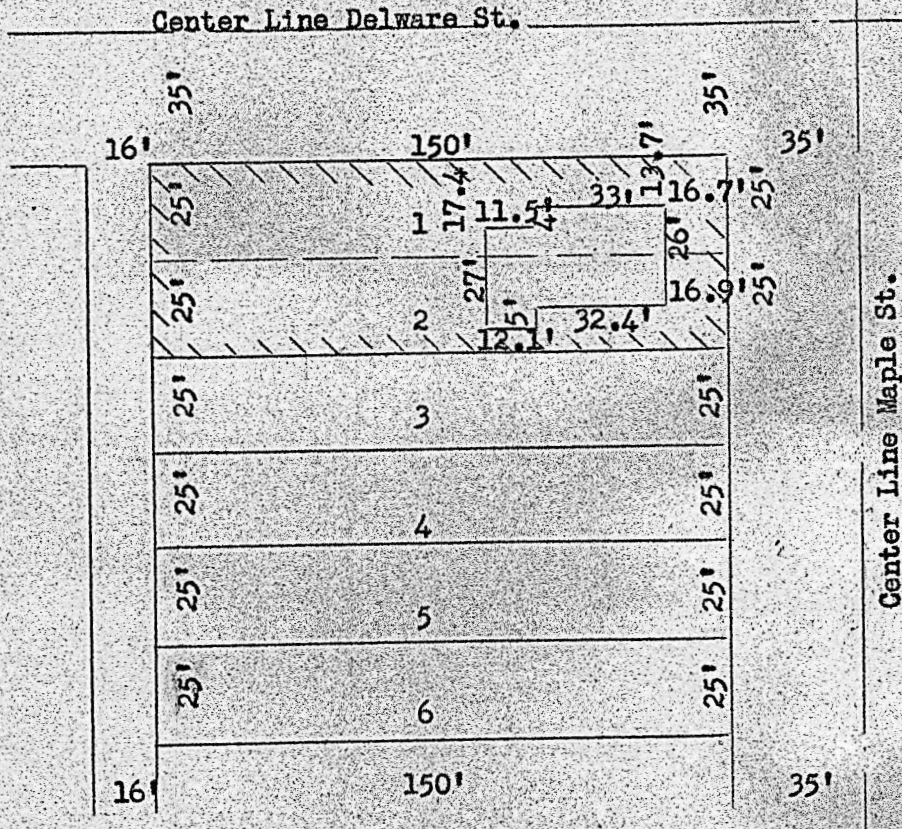
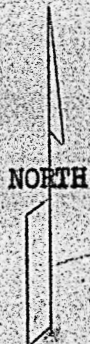


Jan. 26, 1952



Lots 1 & 2
Block 13
First Addition
Inman, Kansas

State of Kansas, County of McPherson, ss

I, Francis D. Wagner, County Engineer of McPherson County, Kansas, do hereby certify that I did cause to be done on the 25th day of January, 1952, a survey of the House Location on Lots 1 & 2, First Addition, Inman, Kansas, and that the accompanying plat is a true exhibit of said survey.

Francis D. Wagner

FRANCIS D. WAGNER
County Engineer

MICROFILM

