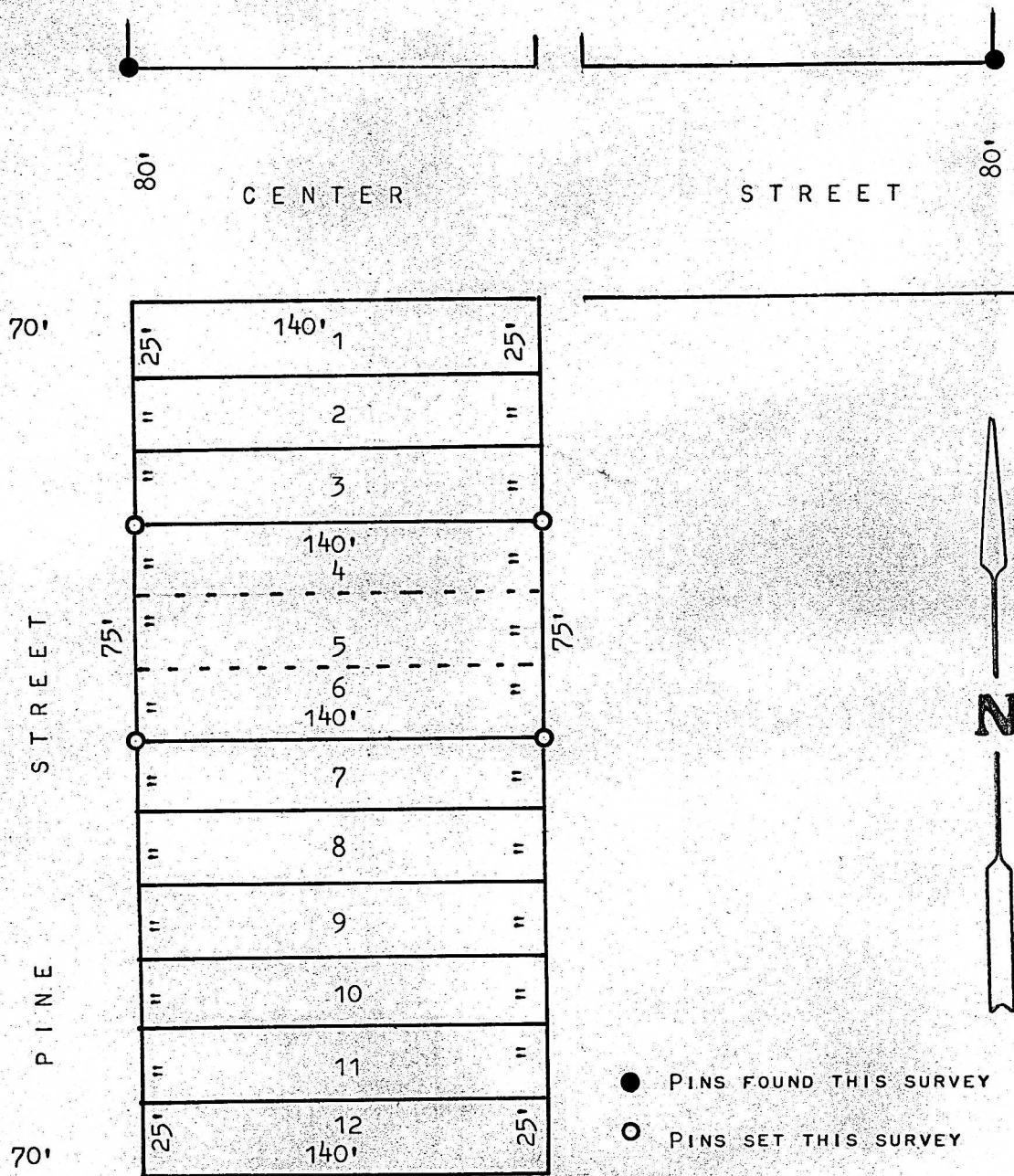


A SURVEY OF LOTS 4,5 & 6, BLOCK 1
PLETT ADDITION, INMAN, KANSAS



- PINS FOUND THIS SURVEY
- PINS SET THIS SURVEY

STATE OF KANSAS)
COUNTY OF MCPHERSON) SS

I, MELVIN FERGUSON, PROFESSIONAL ENGINEER OF THE STATE OF KANSAS DO
HEREBY CERTIFY THAT UNDER MY SUPERVISION A SURVEY WAS MADE OF LOTS
4,5, AND 6, BLOCK 1, PLETT ADDITION, TO THE CITY OF INMAN, KANSAS,
AND THAT THE ACCOMPANYING PLAT IS A TRUE EXHIBIT OF SAID SURVEY AS
FAR AS IT IS KNOWN TO ME.
SURVEY CALLED FOR BY KENNETH MARTENS

SIGNED THIS 12th DAY OF MAY, 1976

Melvin Ferguson
MELVIN FERGUSON
PROFESSIONAL ENGINEER
MCPHERSON, KANSAS



MICROFILM