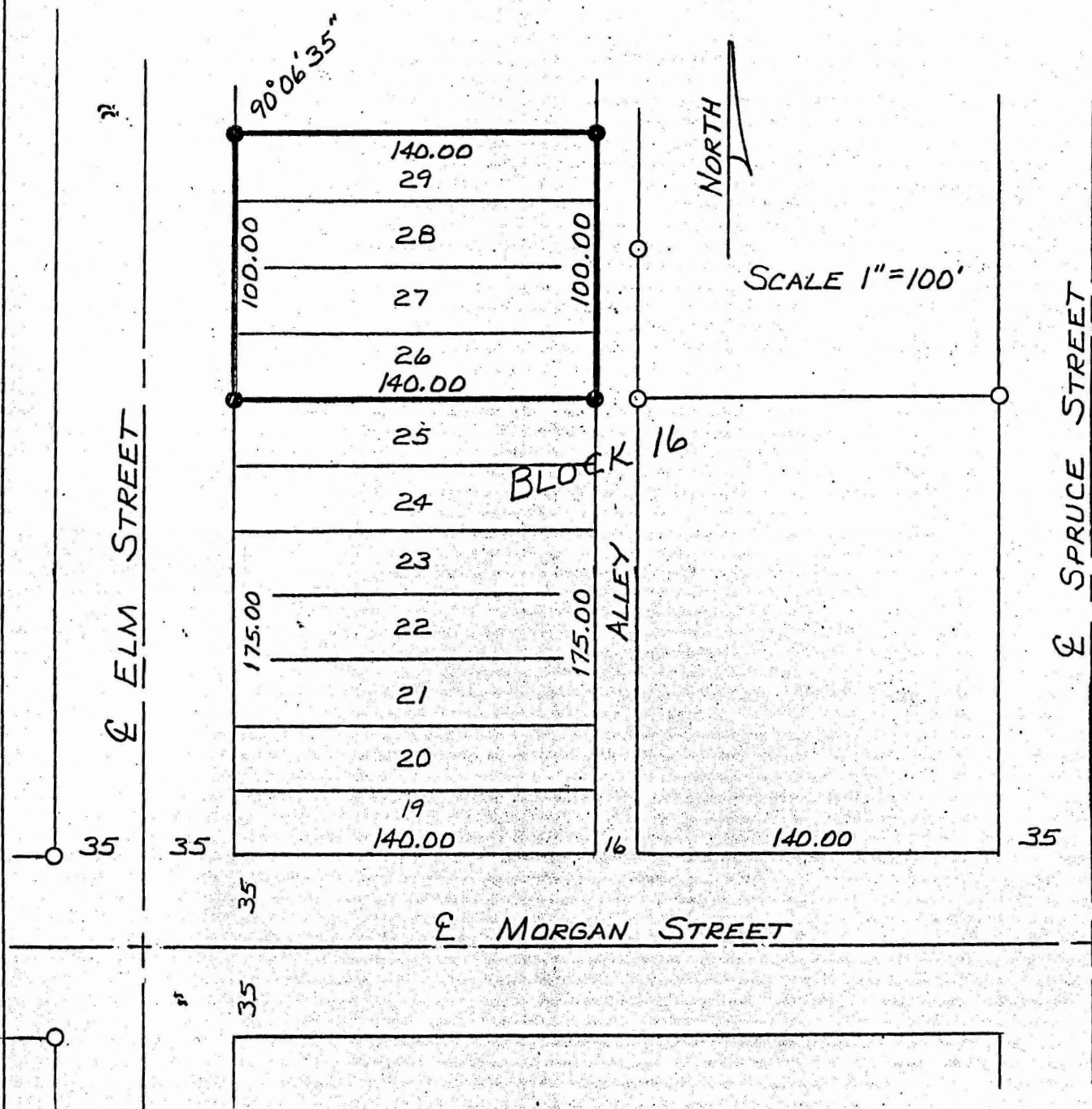


# Garber Surveying Service, P.A.

217 East 1st, Suite 16 Hutchinson, KS 67501

Proj. No. G86-711

SURVEY FOR: Roy Joseph  
DESCRIPTION: Lots 26, 27, 28 and 29, Block 16,  
First Addition to the City of Inman, McPherson County,  
Kansas.



## SURVEYOR'S CERTIFICATE:

I hereby certify this plat to be a true, correct and complete representation of the property described above as surveyed under my supervision, this 22nd of October, 1986.



*Daniel E. Garber*  
Daniel E. Garber RLS #683