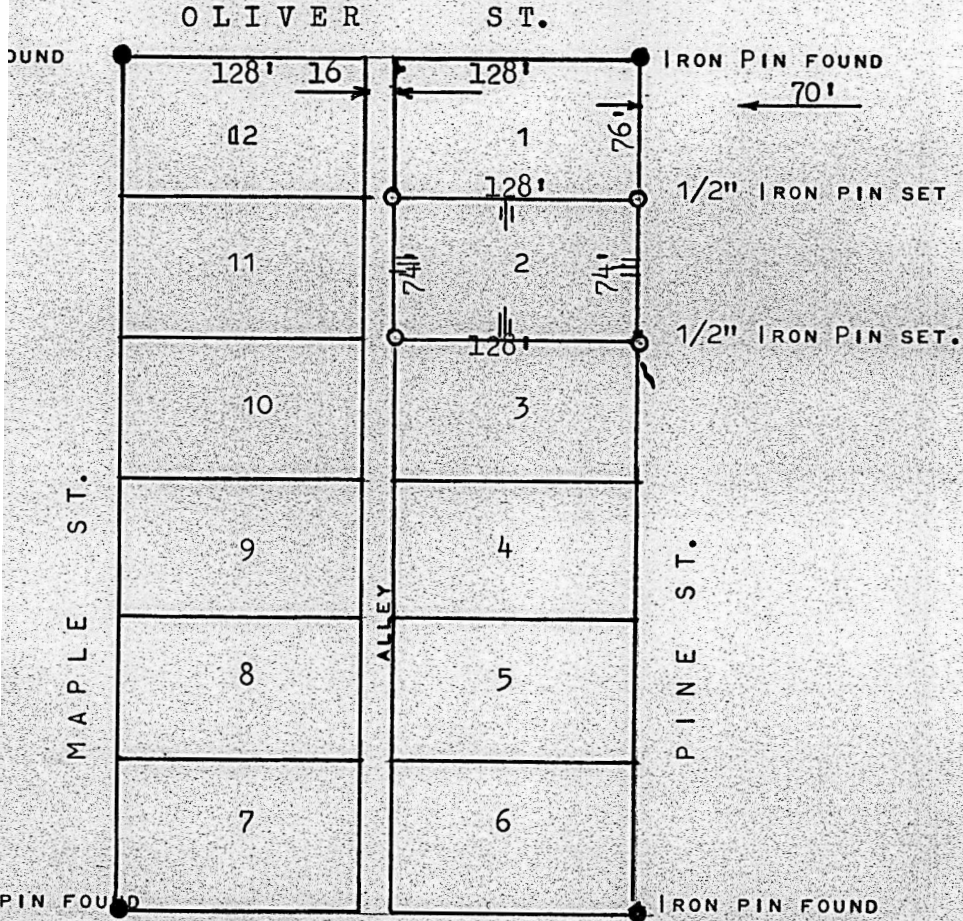


SURVEY OF LOT 2 BLOCK 3 FARMINGTON ADDITION

INMAN, KANSAS

Survey Called for by Elmer P Weins



R. RANKIN LICENSED PROFESSIONAL ENGINEER OF THE STATE OF KANSAS
I CERTIFY THAT A SURVEY OF LOT 2 BLOCK 3 OF FARMINGTON ADDITION
CITY OF INMAN KANSAS, WAS MADE UNDER MY SUPERVISION AND THAT
THE PLAT REPRESENTS A TRUE AND PLAT OF SAID SURVEY SO FAR AS IT
RELATES TO ME. I FURTHER STATE THAT THE IRON PINS WERE SET AT ALL
CORNERS AS SHOWN ON THE PLAT.
WITNESSED THIS 16 TH DAY OF MARCH 1968 AT McPHERSON, KANSAS

