

Survey for: Martens Machine

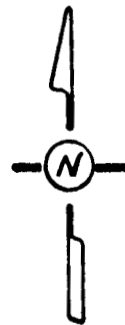
By: Garber Surveying Service, P.A.

217 East First Avenue, Suite 9

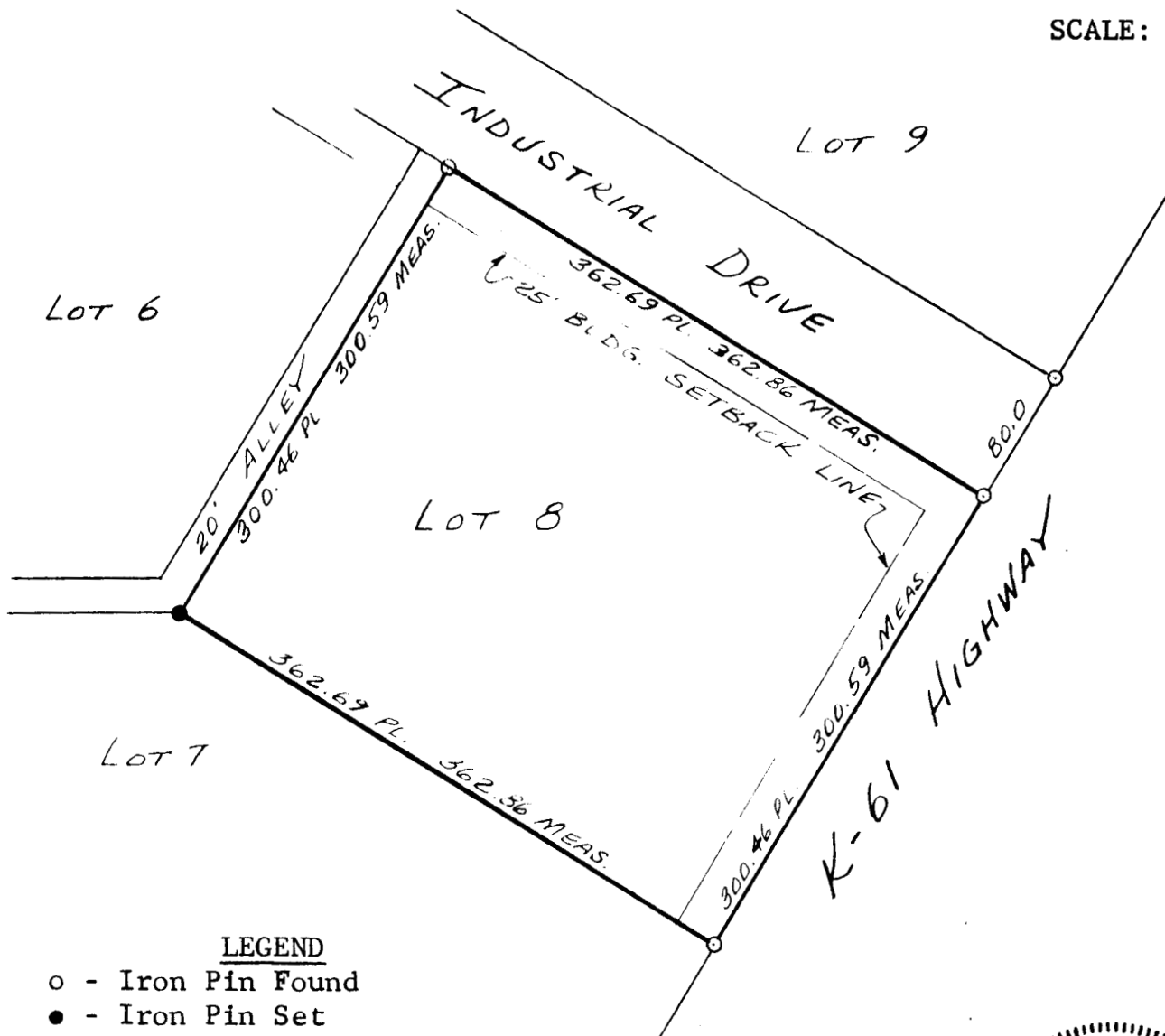
Hutchinson, Kansas 67501

Phone 316-665-7032

DESCRIPTION: Survey of Lot 8, Block 1, Inman Industrial  
Park Replat, in Inman, McPherson County, Kansas.



SCALE: 1"=100'

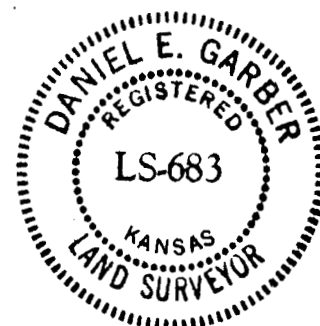


LEGEND

- o - Iron Pin Found
- - Iron Pin Set

I hereby certify this plat to be a true, correct  
and complete representation of the above described  
property, as surveyed under my supervision, this 11th  
day of March, 1983.

*Daniel E. Garber*  
Daniel E. Garber RLS



G83-37