



Garber Surveying
Service, P.A.

423 West 1st Ave. • Hutchinson, Kansas 67501
Phone 316 665-7032 • FAX 316 663-7401

Project No. G97-322

SURVEY FOR: DON CUTSINGER

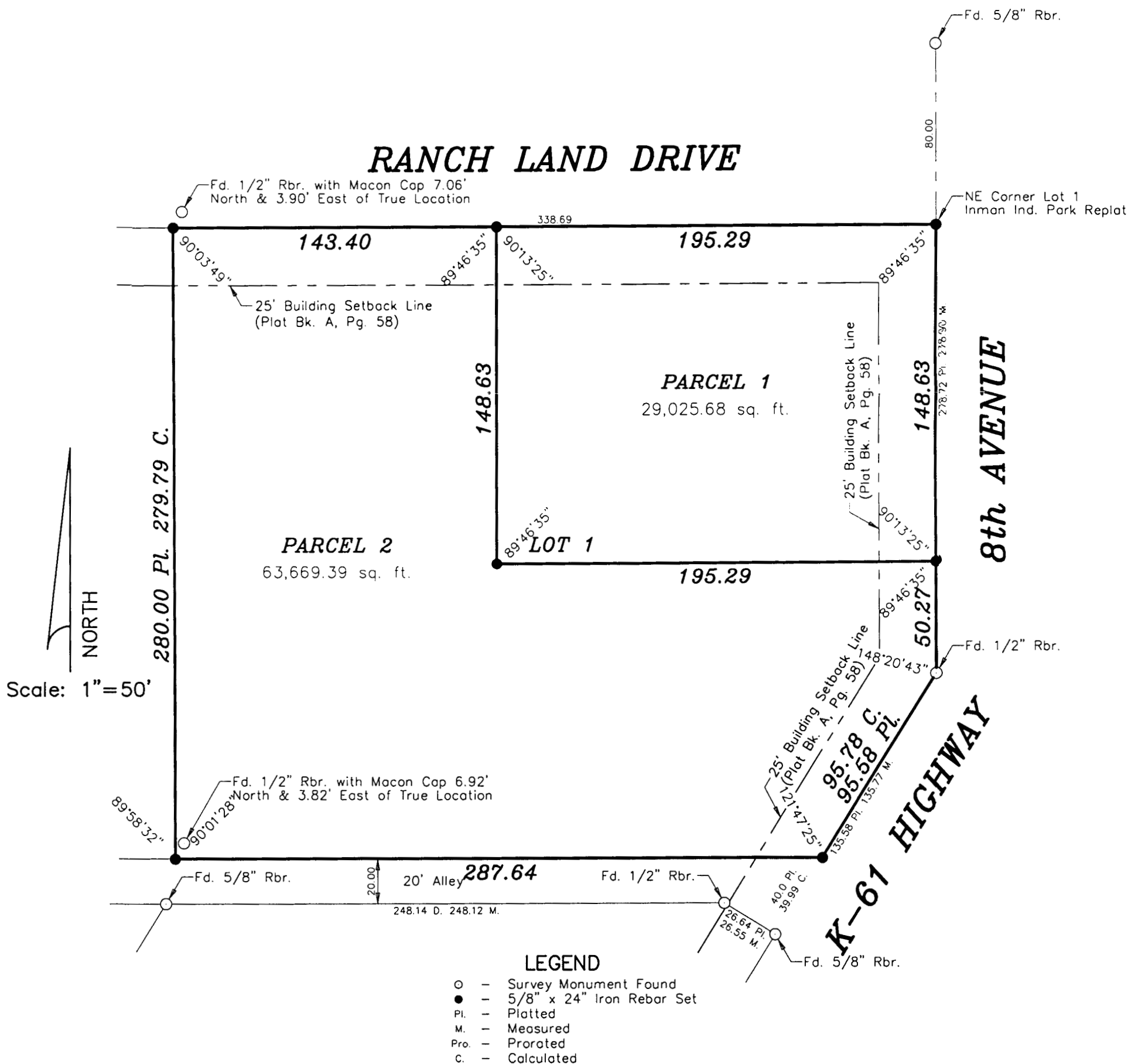
DESCRIPTION: PARCEL 1:

Beginning at the Northeast corner of Lot 1, Inman Industrial Park Replat, a replat of a portion of Inman Industrial Park, City of Inman, McPherson County, Kansas; thence South along the East line of said Lot 1 a distance of 148.63 feet; thence with a deflection angle 89°46'35" right-West parallel with the North line of said Lot 1 a distance of 195.29 feet; thence with a deflection angle 90°13'25" right-North parallel with the East line of said Lot 1 a distance of 148.63 feet to the North line of said Lot 1; thence with a deflection angle 89°46'35" right-East along the North line of said Lot 1 a distance of 195.29 feet to the point of beginning containing 29,025.68 square feet subject to any restrictions of record.

PARCEL 2:

Lot 1, Inman Industrial Park Replat, a replat of a portion of Inman Industrial Park, City of Inman, McPherson, County, Kansas EXCEPT a portion of said Lot 1 described as follows:

Beginning at the Northeast corner of Lot 1, Inman Industrial Park Replat, a replat of a portion of Inman Industrial Park, City of Inman, McPherson County, Kansas; thence South along the East line of said Lot 1 a distance of 148.63 feet; thence with a deflection angle 89°46'35" right-West parallel with the North line of said Lot 1 a distance of 195.29 feet; thence with a deflection angle 90°13'25" right-North parallel with the East line of said Lot 1 a distance of 148.63 feet to the North line of said Lot 1; thence with a deflection angle 89°46'35" right-East along the North line of said Lot 1 a distance of 195.29 feet to the point of beginning containing 63,669.39 square feet subject to any restrictions of record.



DATE OF FIELD WORK: May 1, 1997

SURVEYOR'S CERTIFICATE:

I hereby certify this plat to be a true, correct and complete representation of the property described above as surveyed under my supervision.

Dated: May 7, 1997

Daniel E. Garber
Daniel E. Garber
REGISTERED
LS 683
KANSAS
LAND SURVEYOR