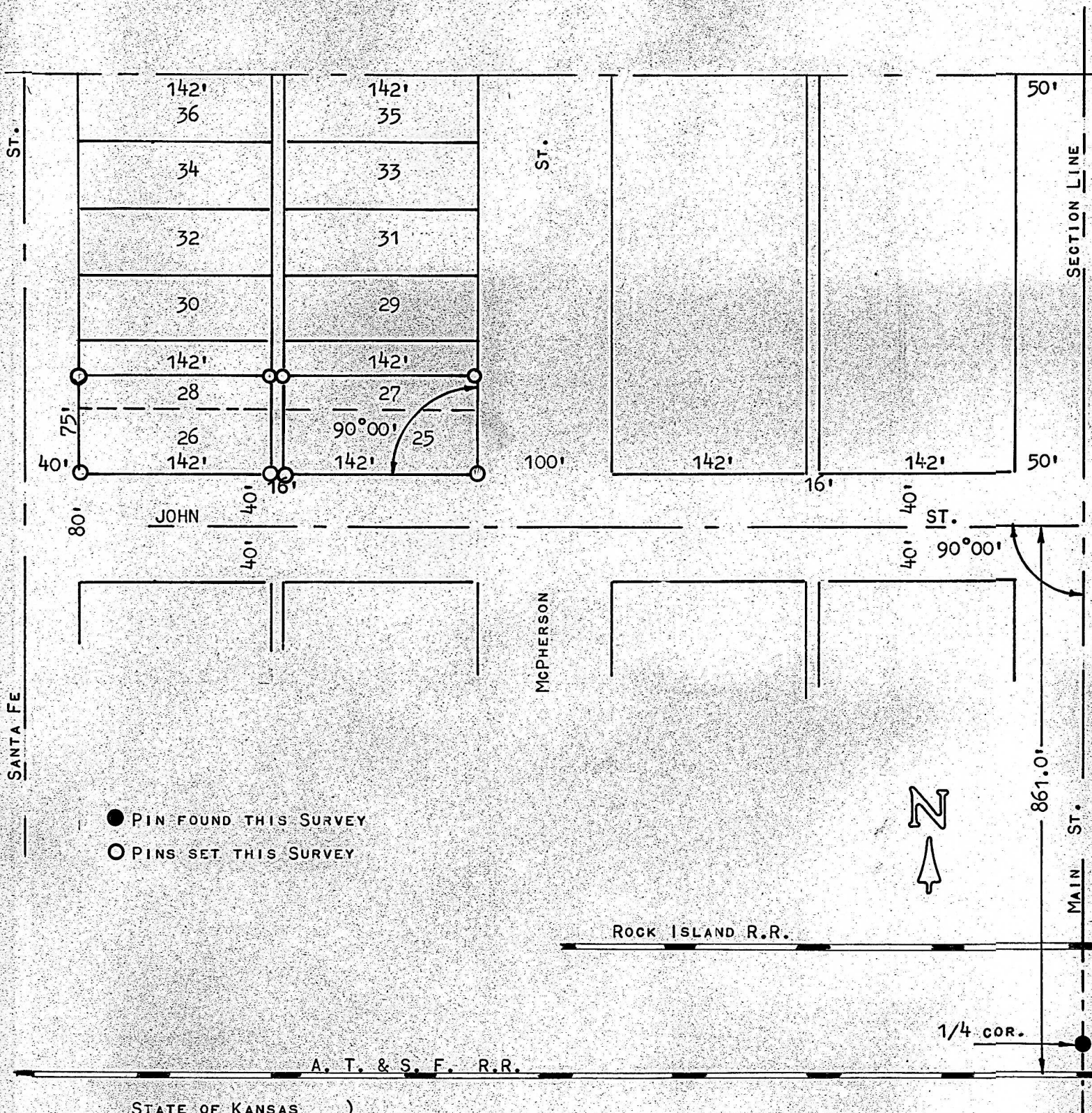


A SURVEY OF LOTS 25, 26 & THE S1/2  
OF LOTS 27, 28 IN BLOCK 6, NORTH GALVA  
ADDITION TO THE CITY OF GALVA, KANSAS



- PIN FOUND THIS SURVEY
- PINS SET THIS SURVEY

STATE OF KANSAS )  
COUNTY OF McPHERSON ) SS

I, F. R. RANKIN, COUNTY ENGINEER OF McPHERSON CO., KANSAS DO HEREBY CERTIFY THAT UNDER MY SUPERVISION A SURVEY WAS MADE OF LOTS 25, 26 & THE S1/2 OF LOTS 27, 28 IN BLOCK 6, NORTH GALVA ADDITION TO THE CITY OF GALVA, KANSAS, AND THE ABOVE PLAT IS A TRUE EXHIBIT OF SAID SURVEY AS FAR AS IT IS KNOWN TO ME.

SURVEY CALLED FOR BY BILL WOLF.

SIGNED ON THIS 5 DAY OF APRIL, 1973.

*F. R. Rankin*  
F. R. RANKIN  
COUNTY ENGINEER  
McPHERSON CO., KANSAS



MICROFILM