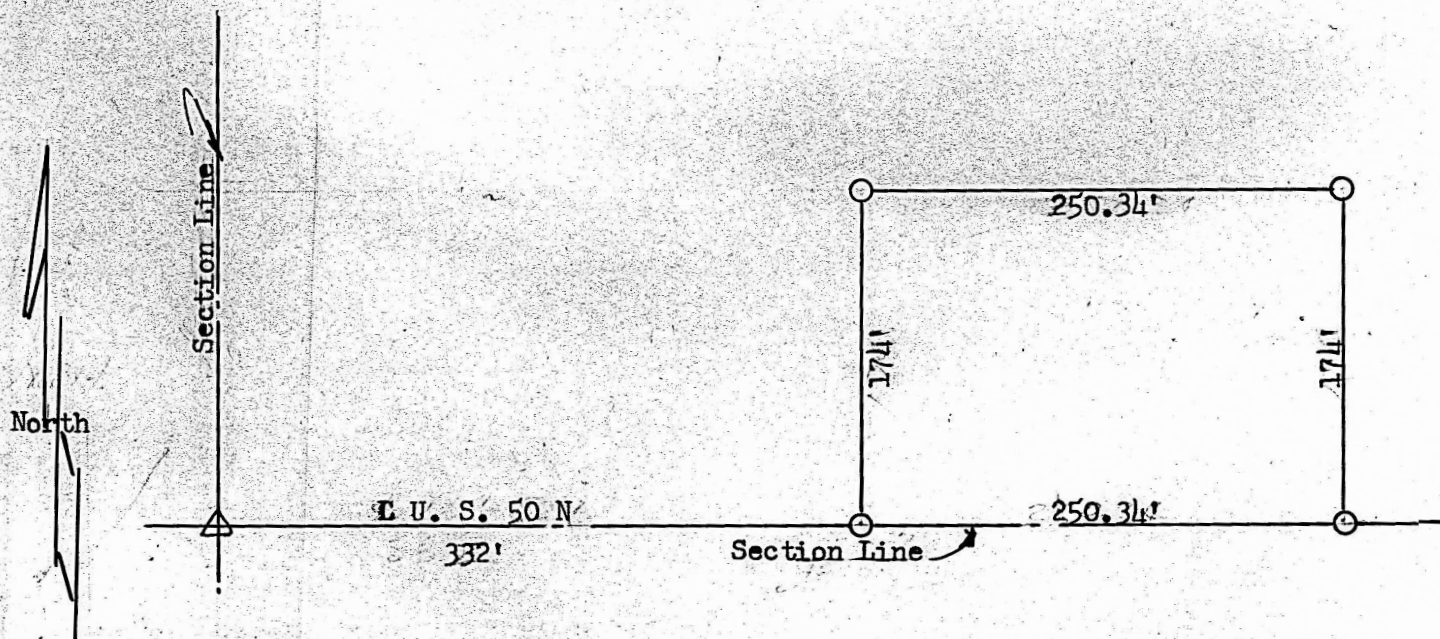


SURVEY IN THE SW 1/4, SW 1/4, SW 1/4  
Section 22 - T 19 S - R 2 W - 6 P M



Common Corner Bet.  
Sec. 21-22-27 & 28  
T 19 S, R 2 W, 6 P M

State of Kansas  
County of McPherson, ss.

I, Francis D. Wagner, County Engineer of McPherson County, Kansas do hereby certify that I did cause to be done on the 9th day of February, 1955, a survey to establish the corners of a tract of land in the SW 1/4, SW 1/4, SW 1/4 of Section 22, T 19 S, R 2 W of the 6th P.M. described as follows:

Beginning at the Southwest corner of the SW 1/4, SW 1/4, SW 1/4 Section 22 - T 19 S - R 2 W thence East along the section line 332' to place of beginning, thence East 250.34' along said section line, thence North 174' parallel to the West section line of said quarter, thence West 250.34', thence South 174' to place of beginning said tract of land contains 1 AC ±.

and that the accompanying plat is a true exhibit of said survey.

February 9, 1955

*Francis D. Wagner*

FRANCIS D WAGNER  
COUNTY ENGINEER  
MCPHERSON COUNTY

*Don Rounds*

by DON ROUNDS  
ASST. ENGINEER



MICROFILM