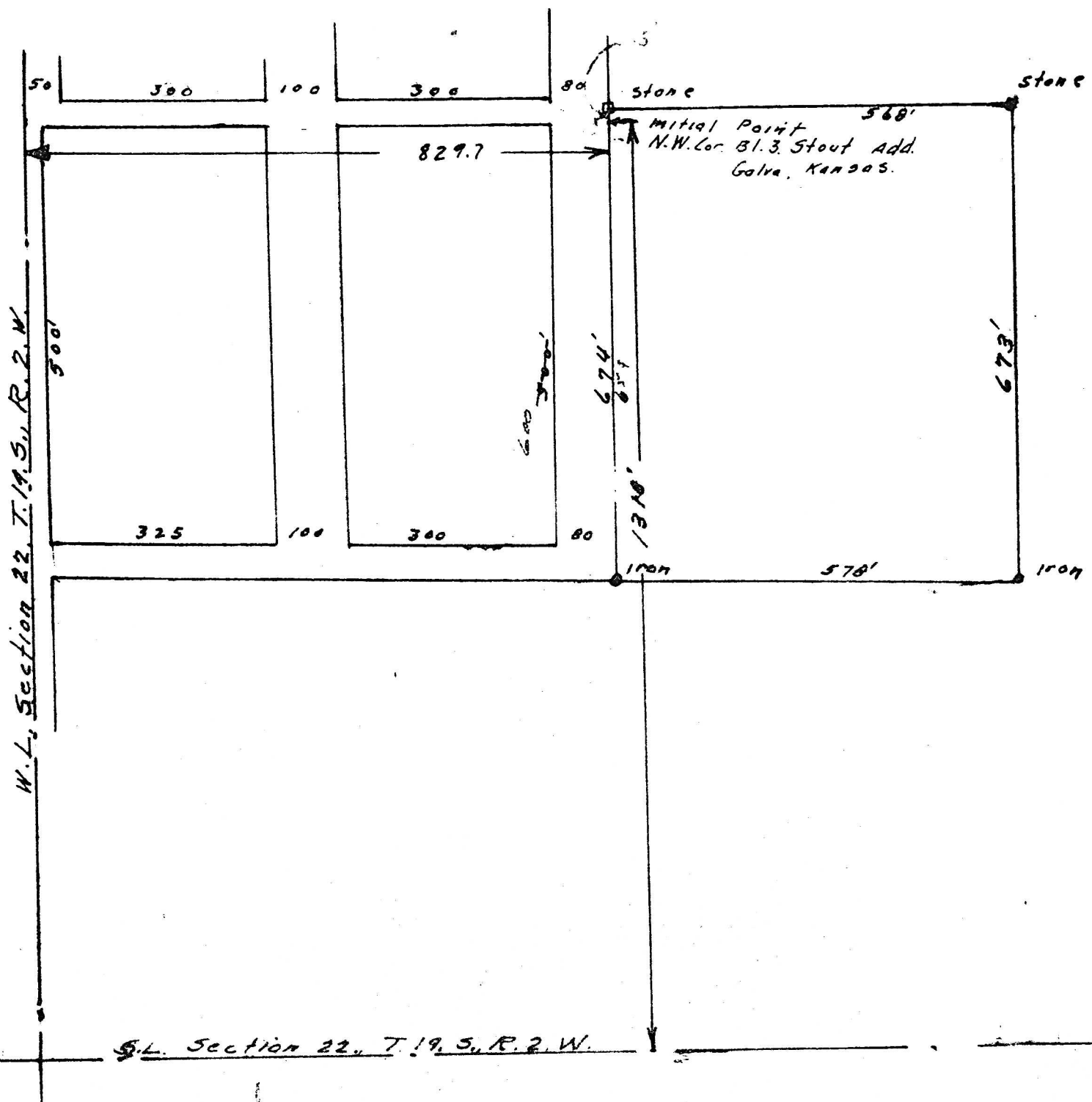


P L A T.



State of Kansas, County of McPherson, ss.

I, G. D. Johnson, County Engineer of McPherson County, Kansas Do hereby certify that I did on the 28th day of August, 1945 survey the following described property, to-wit: Beginning at the northwest corner of Block 3, Stout's Addition to Galva, Kansas, thence south 659 feet along the west line of Said Block 3 to the south line of Fifth Street, thence east along the south line of said Fifth Street 578 feet, thence north 673 feet, thence west 568 feet, thence south 15 feet to the place of beginning. I also certify that the accompanying plat is a true exhibit of said survey.

*G. D. Johnson* County Engineer.

MICROFILM