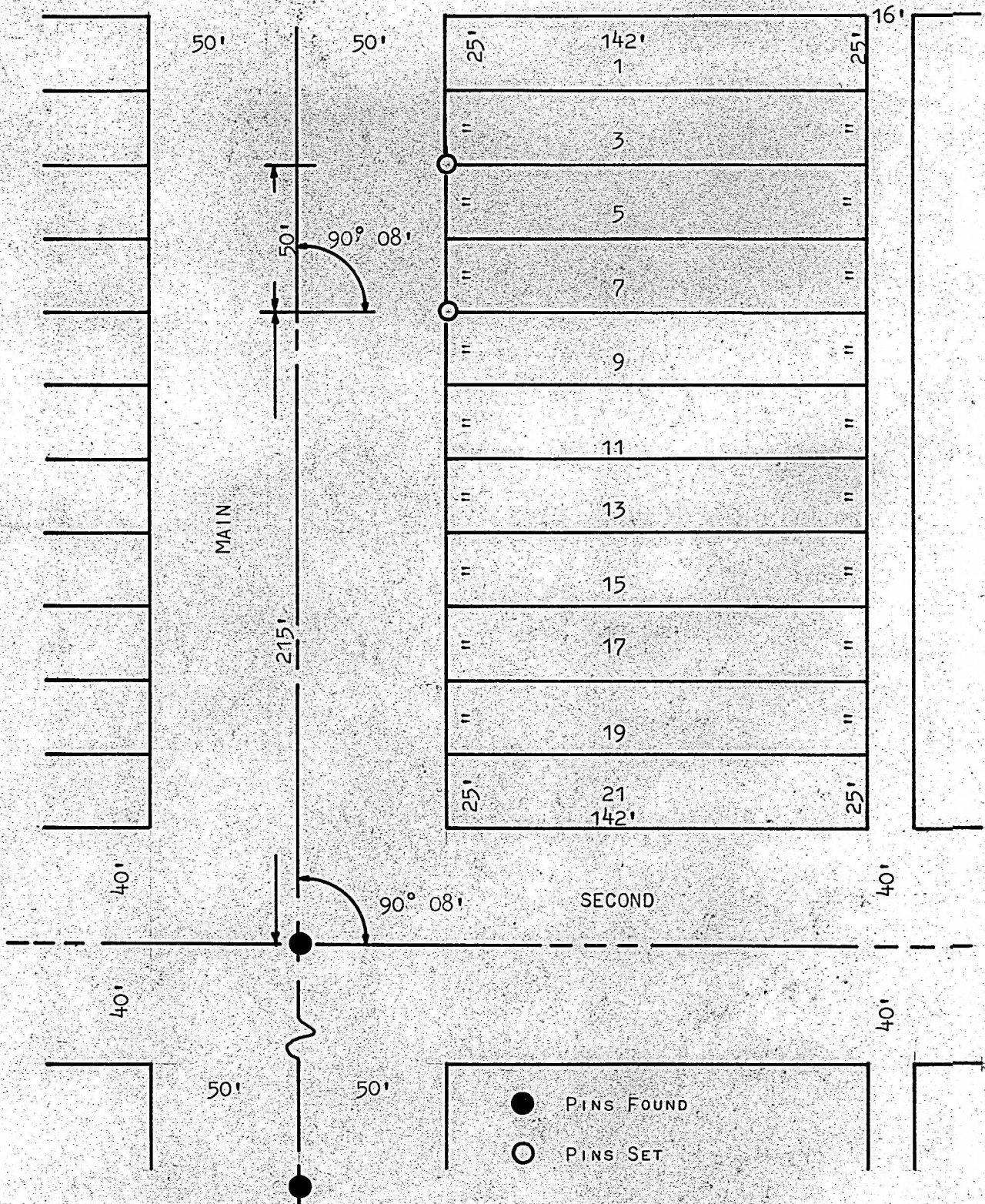


A SURVEY OF LOTS 5 & 6
ORIGINAL TOWN, GALVA, KANSAS



STATE OF KANSAS)
COUNTY OF McPHERSON) SS

I, FRANCIS RANKIN, COUNTY ENGINEER DO HEREBY CERTIFY THAT UNDER MY SUPERVISION A SURVEY WAS MADE OF LOTS 5 AND 7 ORIGINAL TOWN SITE, TO THE CITY OF GALVA, KANSAS. AND THAT THE ABOVE PLAT IS A TRUE EXHIBIT OF SAID SURVEY AS FAR AS IT IS KNOWN TO ME.

SURVEY CALLED FOR BY GLENN SCHMIDT.

SIGNED THIS 25 DAY OF FEBRUARY, 1966

OFFICE

FRANCIS RANKIN
COUNTY ENGINEER
McPHERSON, COUNTY

