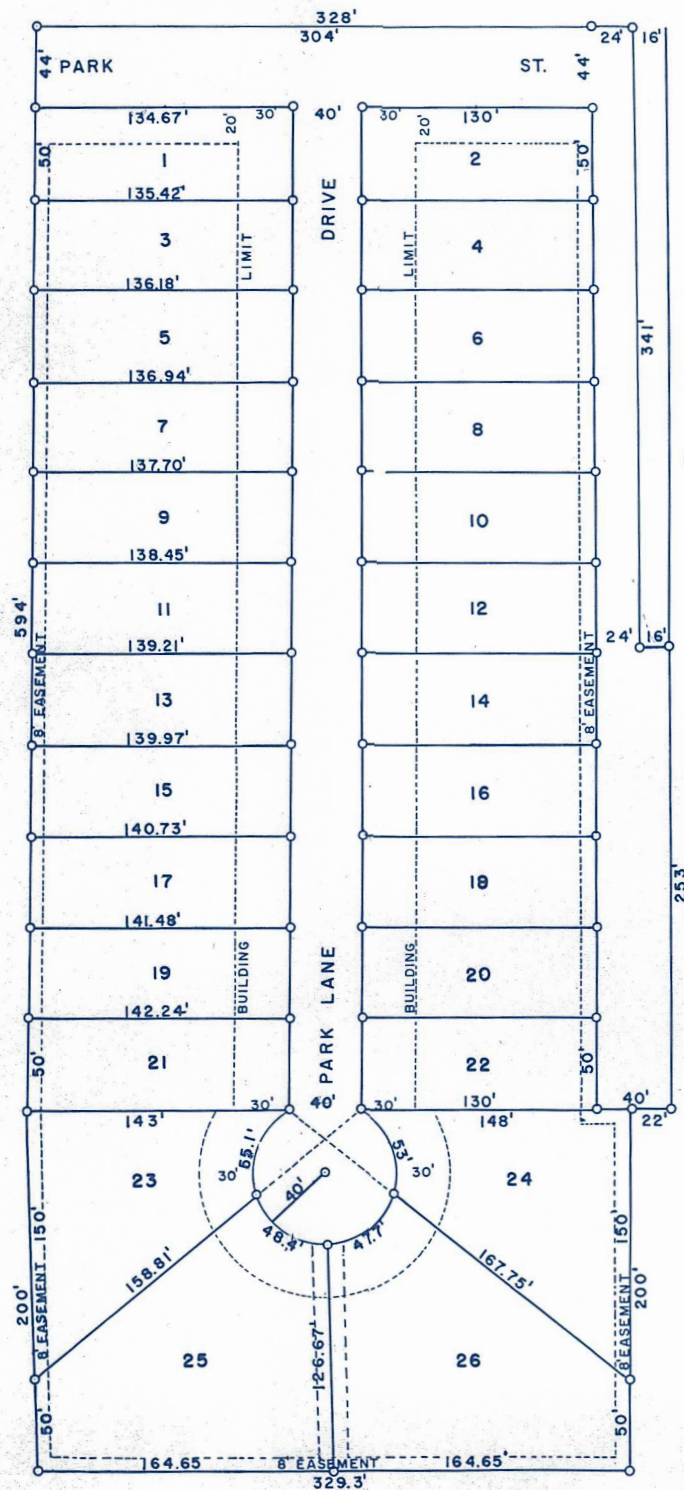


# SOUTH PARK ADDITION

## TO THE CITY OF GALVA KANSAS



Scale 1" = 50'

Description:  
A tract of land lying in the SE 1/4 Section 21, T19S, R2W of the 6th P.M.

Beginning at a point 24 feet east and 249 feet south of the center line of the south end of Santa Fe Street, Galva, Kansas; thence south 341 feet parallel with the east section line; thence 16 feet east; thence south 253 feet, thence west 22 feet; thence south 200 feet parallel with the east section line; thence west 329.3 feet; thence north 200 feet; thence north veering slightly easterly 594 feet; thence east 328 feet parallel with the Atchinson, Topeka and Santa Fe Railroad to the point of beginning.

State of Kansas ) SS  
County of McPherson)

I, Francis Rankin, County Engineer of McPherson County, Kansas, do hereby certify that under my supervision a survey was made of the above described premises and that the accompanying plat is a true exhibit of said survey as far as it is known to me. That all angles, streets, lot lines, and dimensions as shown on the plat are true and correct so far as is known to me.

*Francis Rankin*  
County Engineer

### Dedication

We the undersigned, do hereby certify we are owners of record, and in possession of the above described property, and that we have platted the said tract into lots and blocks for the purpose of resale. The streets, alleys and lanes are hereby dedicated to and for the use of the public and easements along the sides of certain lots of the width shown on this plat are hereby granted for the construction, reconstruction, maintenance and repair of sewers and public utilities.

### Area Covenants

#### A. Building Location

All building construction on said premises shall have the minimum setback from the front lines and the side lot lines as shown on this plat.

Owner of lots one through twenty two so dedicated, signed this 13<sup>th</sup> day of November 1962.

SCHOOL DISTRICT NUMBER 70

ATTEST  
*Edmond R. Cobb*  
Chairman  
*Glenn D. Schmitt*  
Clerk  
*Curtis W. Wink*  
Treasurer

Owner of Lots 23 through 26 so dedicated, signed this 24<sup>th</sup> day of Nov 1962.

*Nathan Giesel*  
Richard  
*Mathilda Giesel*  
Wife

State of Kansas ) SS  
County of McPherson)

Be it known that the accompanying plat of South Park Addition to the City of Galva, Kansas, was submitted to the governing body of Galva, Kansas and approved on the 10<sup>th</sup> day of Dec 1962.

ATTEST  
*R. M. Walline*  
Mayor  
*H. D. Myer*  
City Clerk

State of Kansas ) SS  
County of McPherson)

Be it known that the attached plat has been submitted to me, and the same is hereby approved this 10<sup>th</sup> day of December 1962.

*Blaine Brumgar*  
City Attorney

Approved by Board of County Commissioners

Approved this 10<sup>th</sup> day of Dec 1962.

ATTEST  
*Reginald Harding*  
*Willard Johnson*  
County Clerk

Approval of McPherson County Attorney

Approved this 14<sup>th</sup> day of Nov 1962.

*Quinn D. Dunning*  
County Attorney

Recorded this 19 day of December 1962 in the office of the Register of Deeds, McPherson County, Kansas.

Fee \_\_\_\_\_  
*Marshall Bush*  
Register of Deeds

Entered in transfer record this \_\_\_\_\_ day of \_\_\_\_\_ 19\_\_\_\_ at McPherson County Clerks office.

Fee \_\_\_\_\_  
County Clerk

STATE OF KANSAS ) McPHERSON COUNTY, KS  
BE IT REMEMBERED, That on this 18 day of Dec, A.D., 1962, before me, the undersigned, *Edmond R. Cobb*, a Notary Public in and for the County and State aforesaid, came *Edmond R. Cobb*, *Glenn D. Schmitt*, *Curtis W. Wink*, *Nathan Giesel*, *Mathilda Giesel*, *Reginald Harding*, *Willard Johnson*, *Quinn D. Dunning*, *Marshall Bush*, all of whom being personally known to me to be the same persons who executed the within instrument of writing, and such persons duly acknowledged the execution of the same.  
IN TESTIMONY WHEREOF, I have hereunto set my hand and affixed my Seal, the day and year last above written.  
*Edmond R. Cobb*, Notary Public  
(Term expires Jan 1, 1963.)

9860  
9860  
Dec 19 1962  
*Marshall Bush*