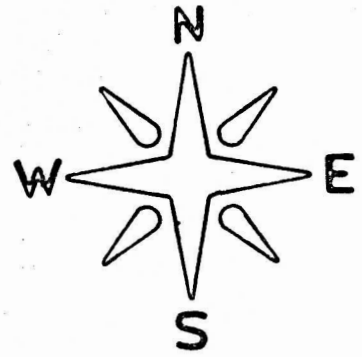
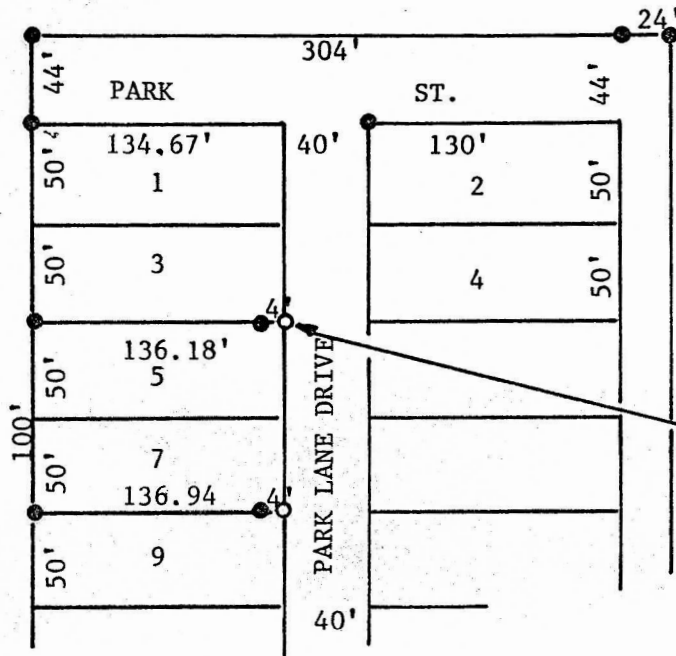
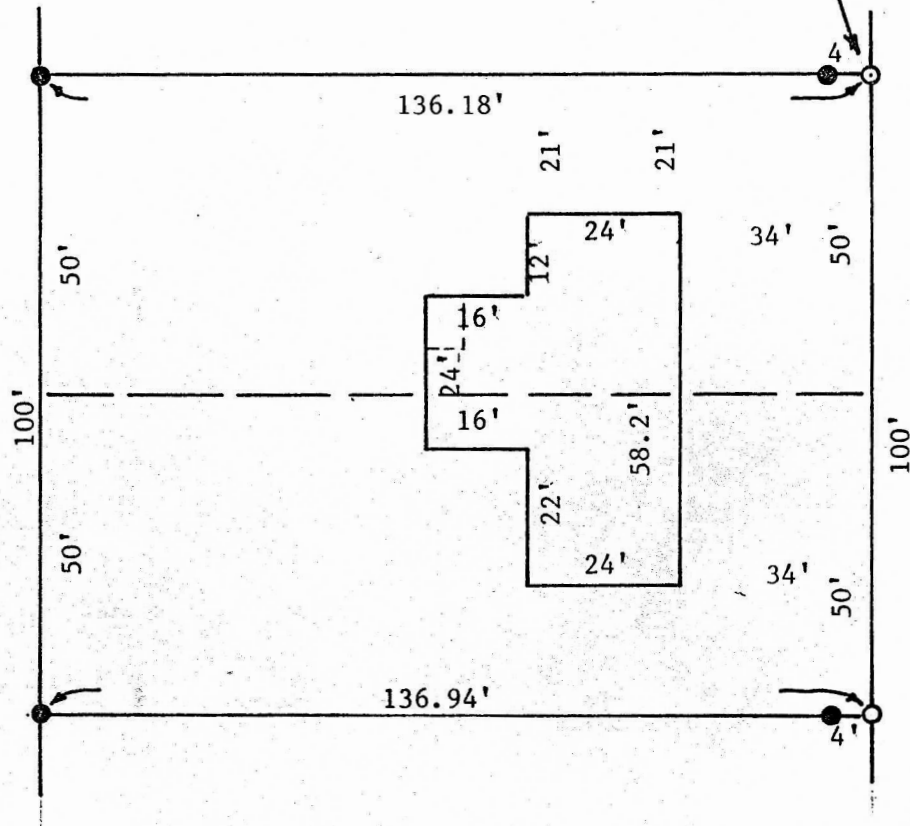


Survey Lots 5 & 7
South Park Addition
Galva Kansas



- Pins found and verified
- Pins set this survey

IDENTICAL POINTS



STATE OF KANSAS)
COUNTY OF MCPHERSON) S.S.

I, J.L. Griffis, Registered Land Surveyor in the State of Kansas, do hereby certify that under my supervision a survey was made of Lots 5 & 7 of South Park Addition to the City of Galva Kansas, and the above plat is a true exhibit of said survey as far as it is known to me.

Survey requested by Fred Bohnenblust

Signed this 24th day May 1982



J.L. Griffis R.L.S.
J.L. Griffis
McPherson Kansas