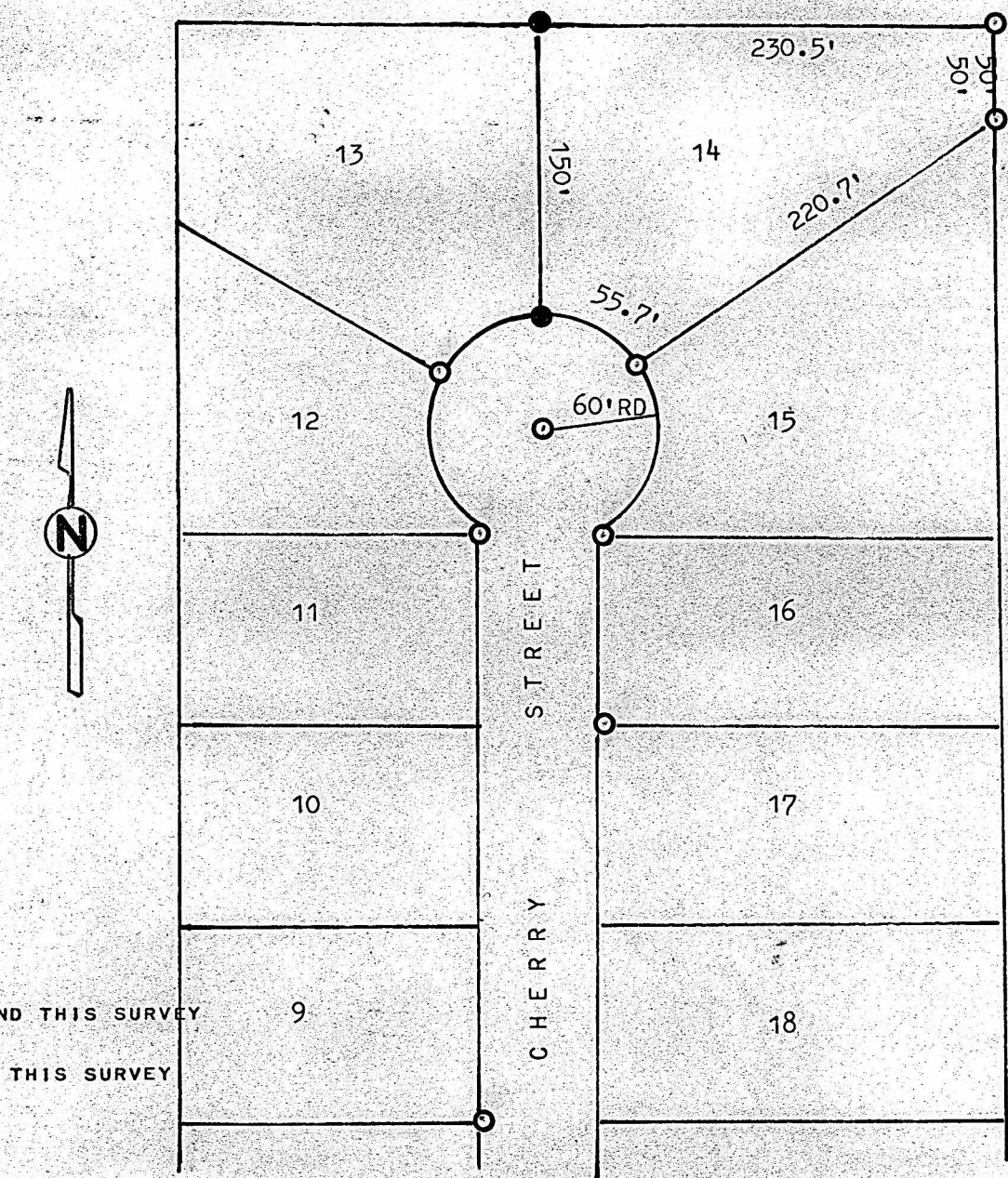


A SURVEY OF LOT 14, LARSON ADDITION
GALVA, KANSAS



KANSAS)
OF MCPHERSON) SS

I, MELVIN FERGUSON, PROFESSIONAL ENGINEER OF THE STATE OF KANSAS DO HEREBY
CERTIFY THAT UNDER MY SUPERVISION A SURVEY WAS MADE OF LOT 14, LARSON ADDITION
CITY OF GALVA, KANSAS, AND THAT THE ABOVE PLAT IS A TRUE EXHIBIT
OF THE SURVEY AS FAR AS IT IS KNOWN TO ME.
CALLED FOR BY JANTZ

THIS 15th DAY OF SEPTEMBER, 1981

MELVIN FERGUSON
PROFESSIONAL ENGINEER
GALVA, KANSAS

