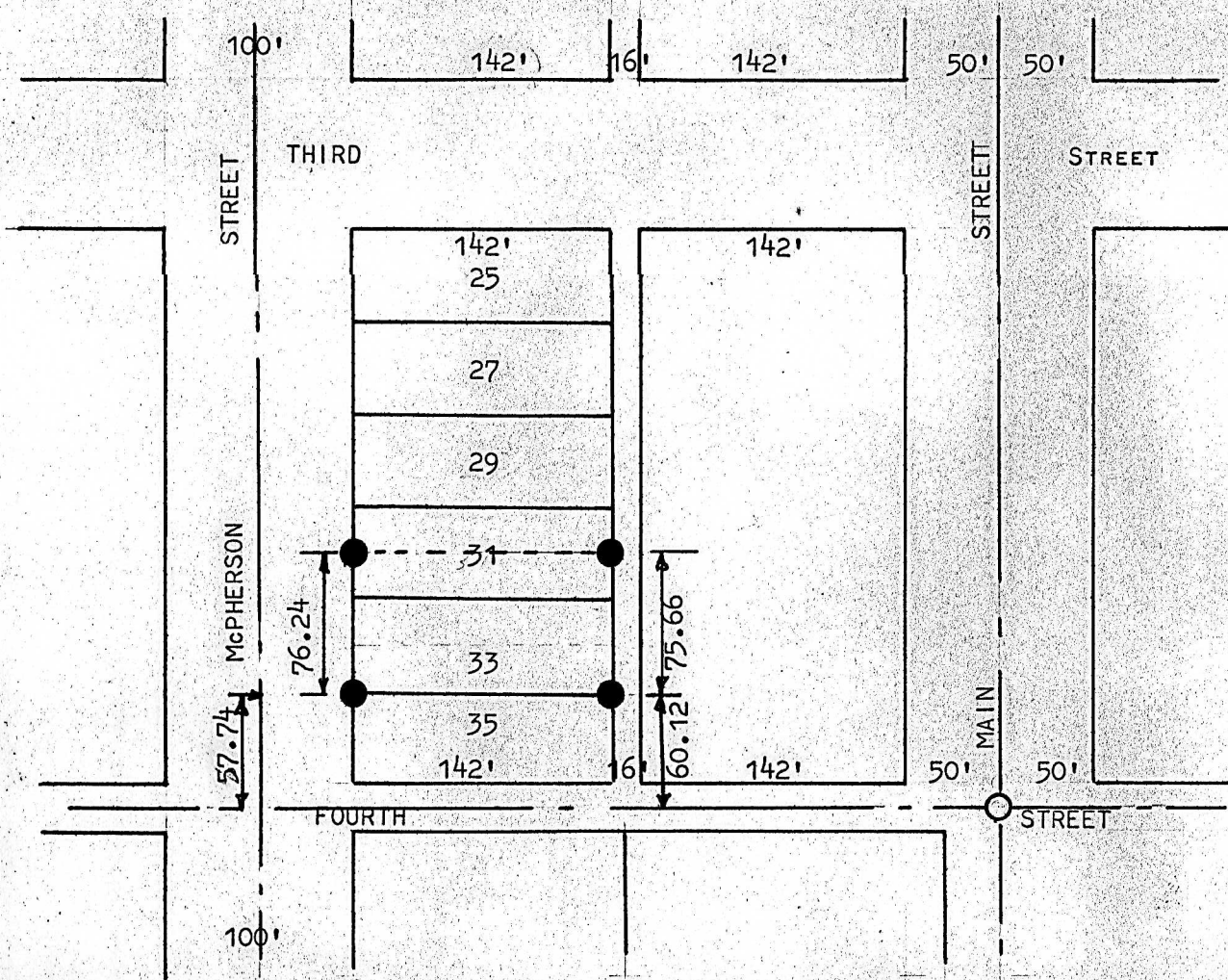


A SURVEY OF LOT 33 & So. 1/2
OF LOT 31, McPHERSON STREET
O.T.S. GALVA, KANSAS



OPINS FOUND THIS SURVEY

 PINS SET THIS SURVEY

STATE OF KANSAS)
COUNTY OF MCPHERSON) SS:

I, FRANCIS RANKIN, PROFESSIONAL ENGINEER OF THE STATE OF KANSAS DO HERBY CERTIFY THAT UNDER MY SUPERVISION A SURVEY WAS MADE ON THE 3RD DAY OF OCTOBER, 1962, OF LOT 33 AND THE SOUTH HALF OF LOT 31 McPHERSON STREET, ORIGNAL TOWN TO THE CITY OF GALVA, KANSAS, AND THAT THE ACCOMPANYING PLAT IS A TRUE EXHIBIT OF SAID SURVEY AS FAR AS IT IS KNOWN TO ME.

SURVEY CALLED FOR BY GERALD RIERSON

SIGN THIS 9 DAY OF October 1962

Francis Parkie

FRANCIS RANKIN
PROFESSIONAL ENGINEER
McPHERSON, KANSAS