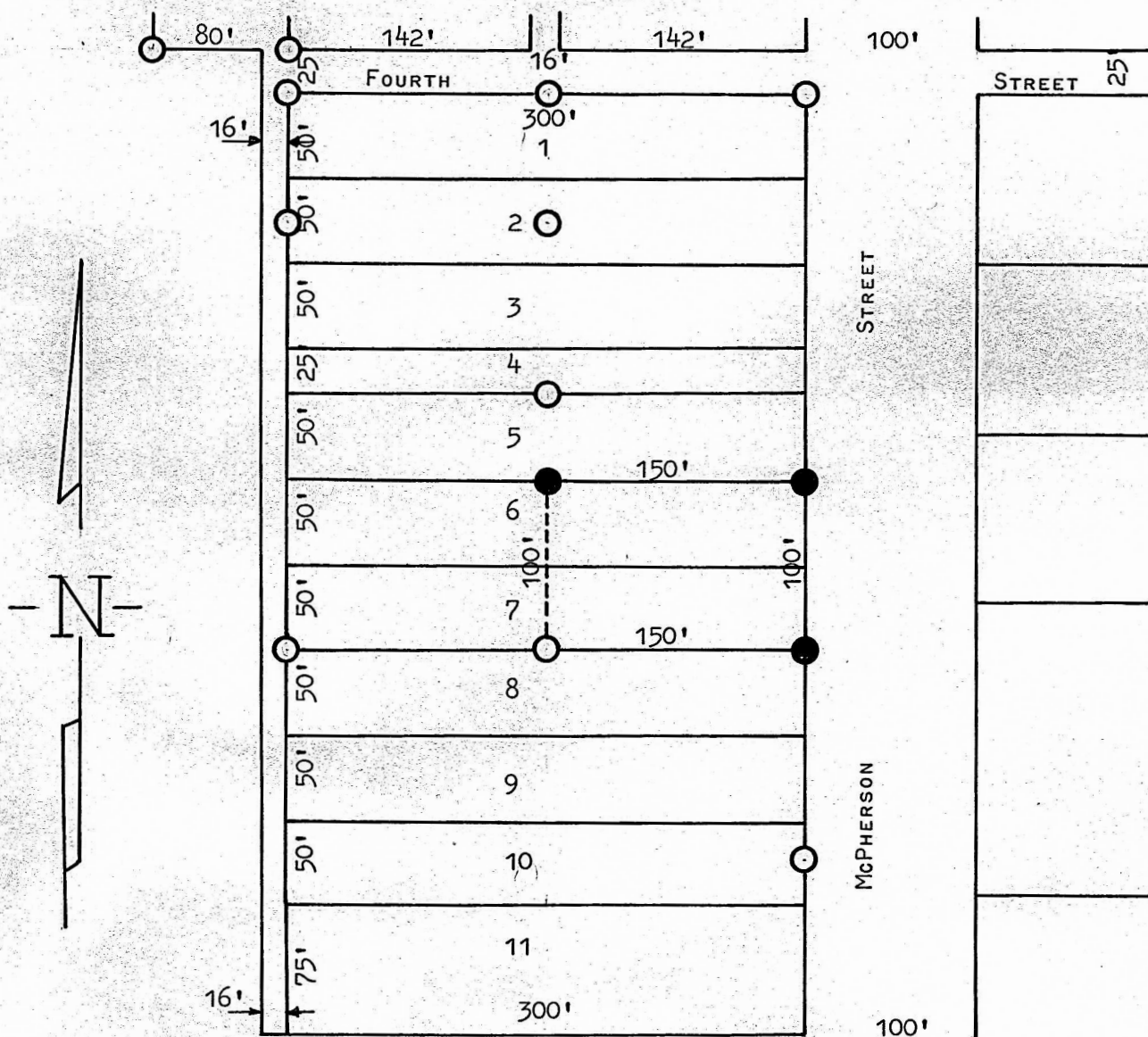


A SURVEY OF LOTS 6 & 7
VANNESS ADDITION
GALVA, KANSAS



- PINS SET THIS SURVEY
- PINS FOUND THIS SURVEY

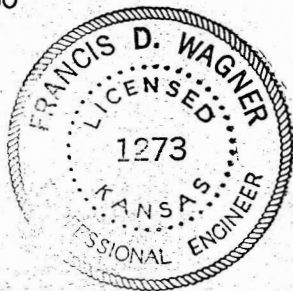
STATE OF KANSAS)
COUNTY OF McPHERSON) SS

I, FRANCIS D. WAGNER, COUNTY ENGINEER OF McPHERSON COUNTY, KANSAS DID CAUSE TO BE DONE ON THE 22ND DAY OF JULY, 1960, A SURVEY OF THE EAST 150' FEET OF LOTS 6 & 7 VANNESS ADDITION TO THE CITY OF GALVA, COUNTY OF McPHERSON, KANSAS, AND THAT THE ACCOMPANYING PLAT IS A TRUE EXHIBIT OF SAID SURVEY.

Francis D. Wagner

FRANCIS D. WAGNER
COUNTY ENGINEER
McPHERSON COUNTY

JULY 23, 1960



MICROFILM