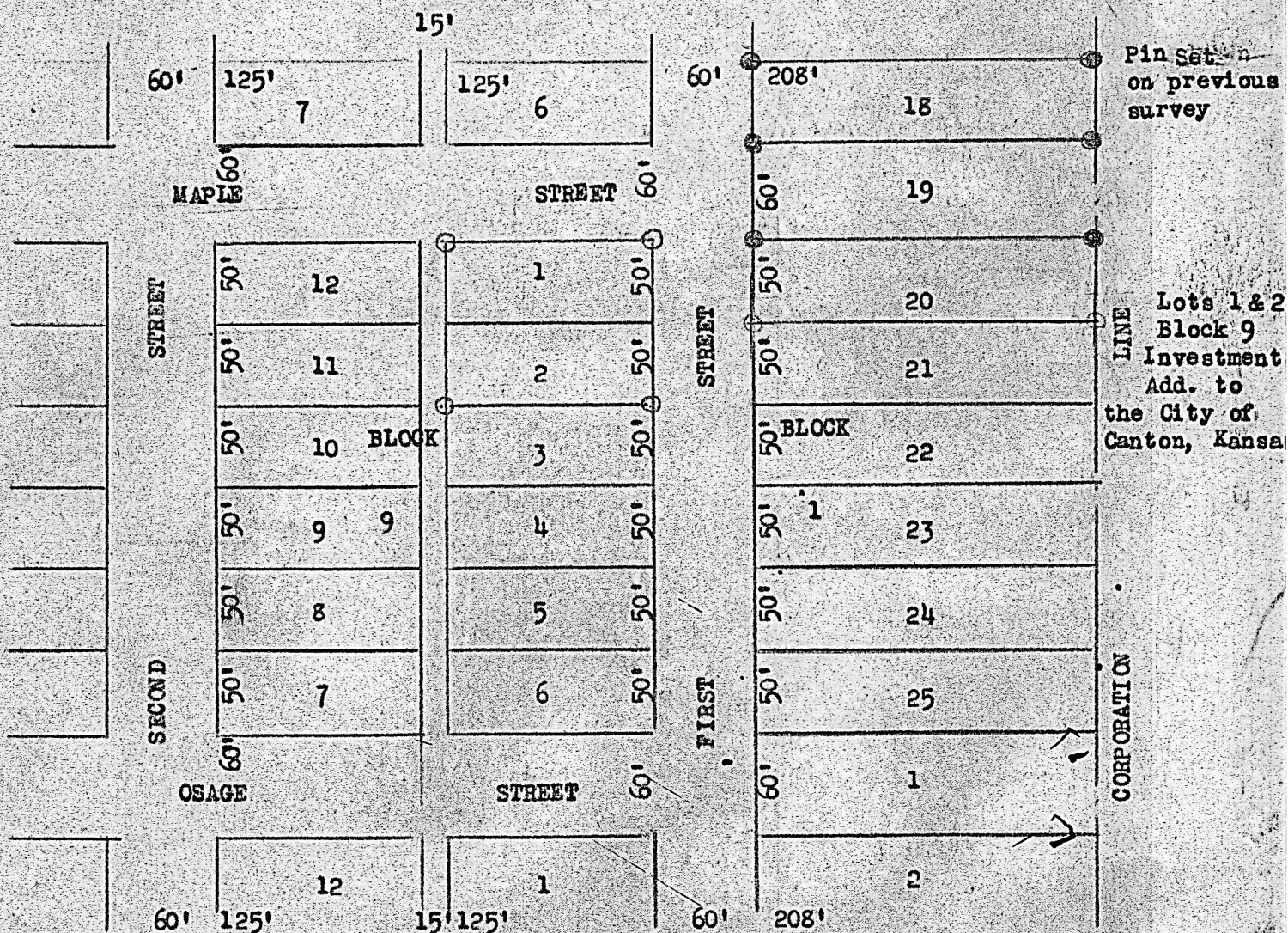


OFFICE OF COUNTY ENGINEER  
MC PHERSON COUNTY  
February 16, 1953



State of Kansas, County of McPherson, ss

I, Francis D. Wagner, County Engineer of McPherson, County, Kansas did cause to be done on the 2nd day of February, 1953 a survey that determined the corners of Lots 1 and 2 Block 9, Investment Addition to the City of Canton, Kansas and that the accompanying plat is a true exhibit of said survey.

*Francis D. Wagner*

FRANCIS D. WAGNER  
County Engineer  
McPherson County

MICROFILM  
MICROFILM