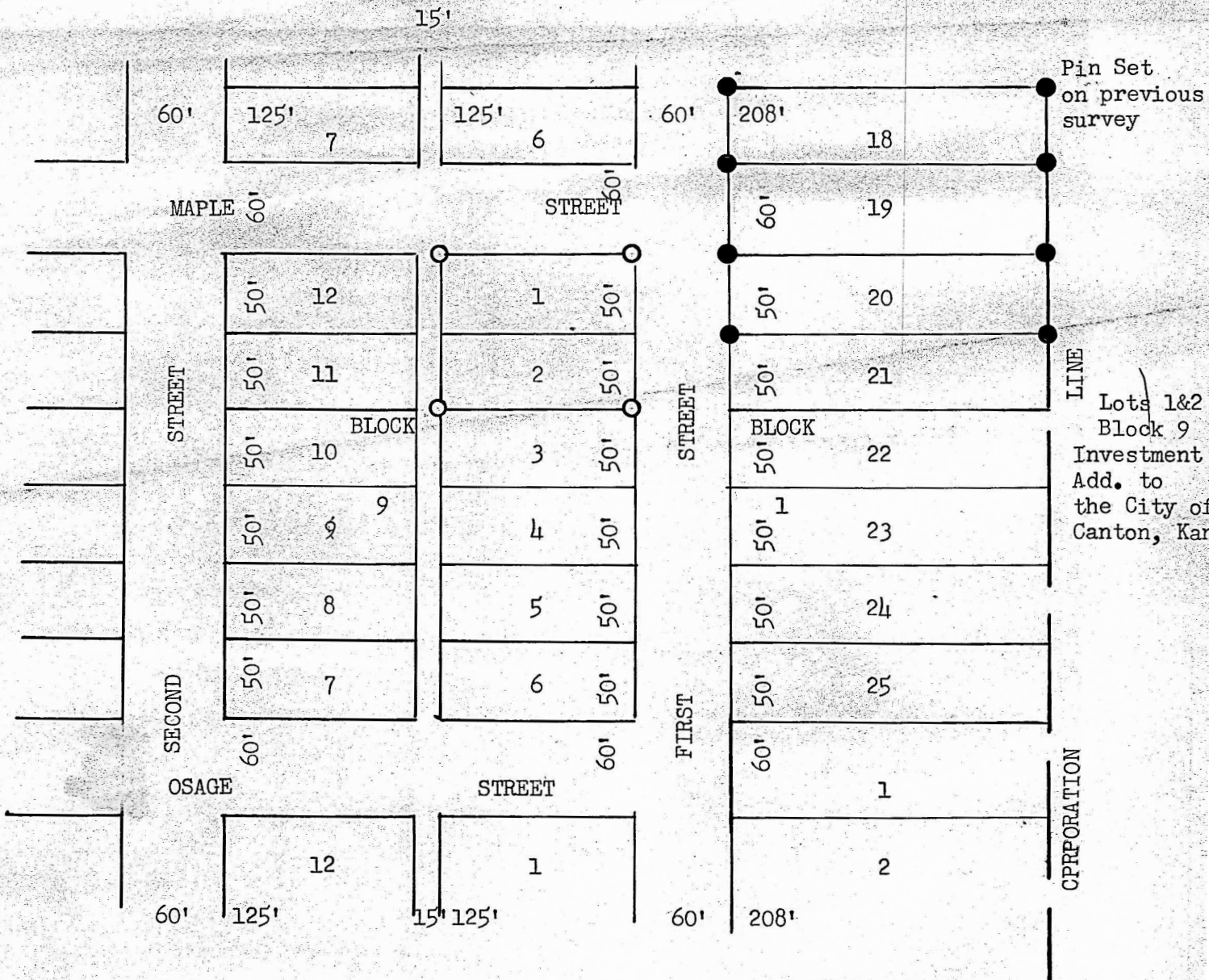


(COPY)

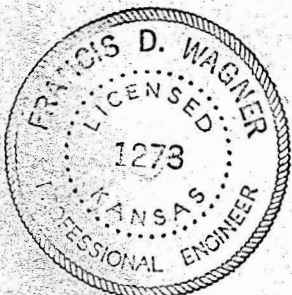
OFFICE OF COUNTY ENGINEER
MC PHERSON COUNTY
FEBRUARY 16, 1953



State of Kansas, County of McPherson, ss

I, Francis D. Wagner, County Engineer of McPherson, County, Kansas did cause to be done on the 2nd day of February, 1953 a survey that determined the corners of Lots 1 and 2 Block 9, Investment Addition to the City of Canton, Kansas and that the accompanying plat is a true exhibit of said survey.

MICROFILM



Francis D. Wagner
FRANCIS D. WAGNER
COUNTY ENGINEER
McPHERSON COUNTY