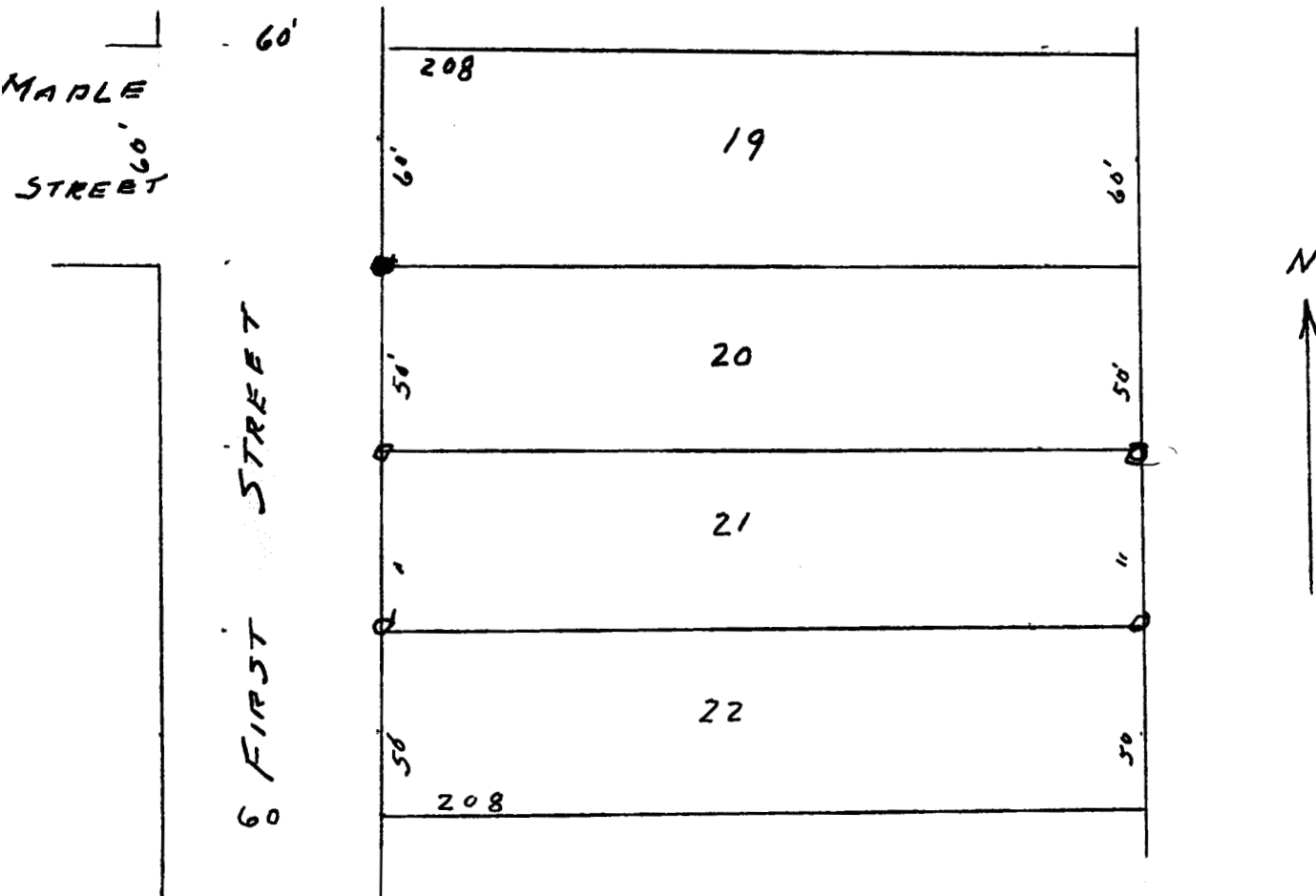


Lot 21, Block 1, Investment Addition, Canton, Kansas,



State of Kansas, )  
County of McPherson,) SS.

I, G.D. Johnson, Licensed Civil Engineer in the State of Kansas, do hereby certify that I did on the 12th. day of May, 1962 survey Lot 21, Block 1, Investment Addition to the City of Canton, Kansas and that accompanying plat is a true exhibit of said survey.

G.D. Johnson

MICROFILM

