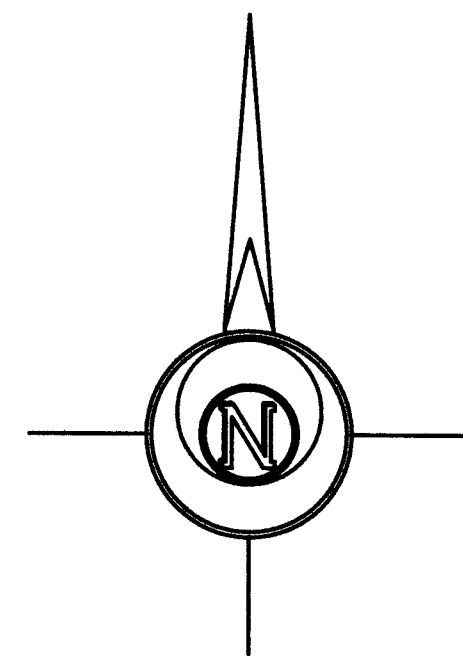
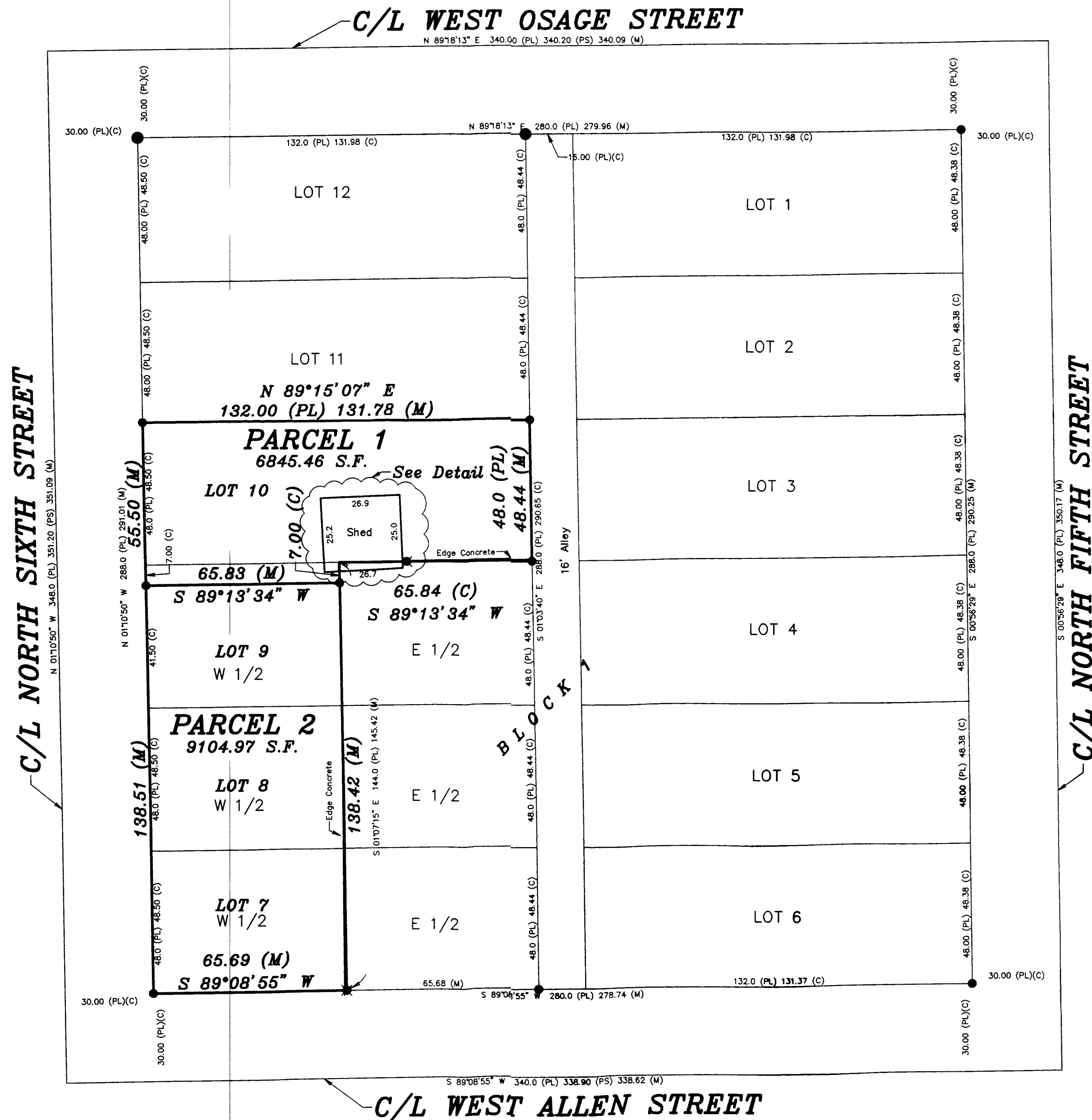


Saved 6/17/2013 4:26:40 PM by KLOUTZEN  
Plot Date & Time Tuesday, June 18, 2013 12:54:58 PM Dwg Path U:\DDN\_GSSFILES\2013\20130307\_C36.dwg 20130307 Auto S Ground



BASIS OF BEARING = KANSAS STATE PLANE GRID

#### LEGEND

- - 5/8" x 24" Iron Rebar Set w/G.S.S. Cap
- ✱ - "X" Cut In Concrete Set
- (C) - Calculated
- (M) - Measured
- (PL) - Platted
- (PS) - Previous Survey by G.D. Johnson McPherson County Engineer. No Date but map of city survey on file at McPherson County public works Vault

#### DESCRIPTION:

##### PARCEL 1:

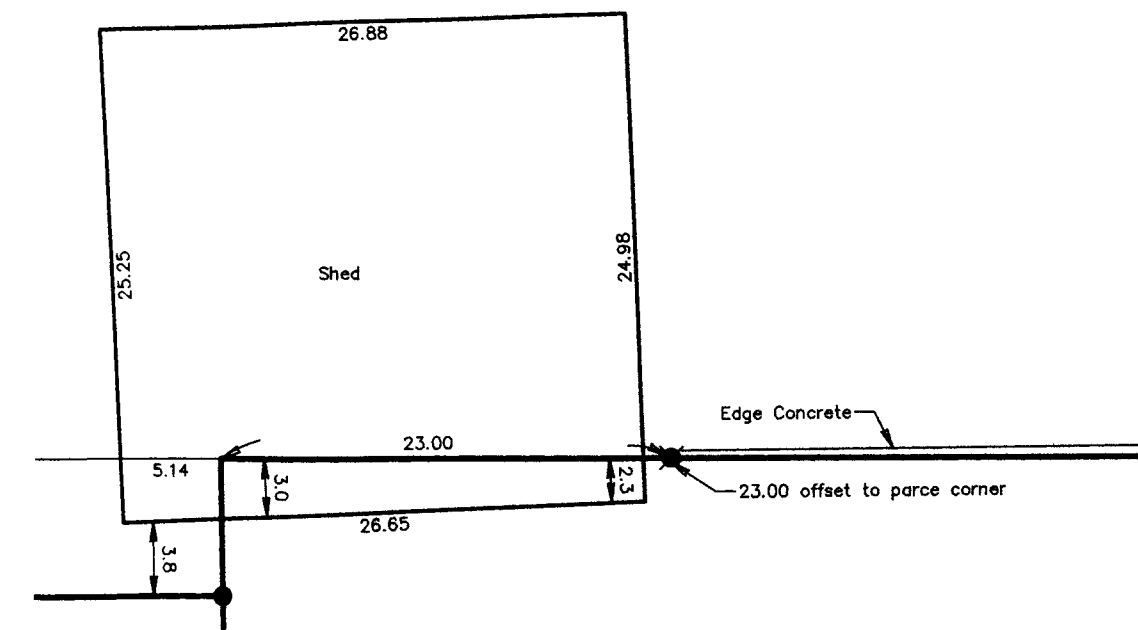
Lot 10 and the North 7 feet of the West Half of Lot 9, Block 1, McAlister's First Addition to the City of Canton, McPherson County, Kansas.

##### PARCEL 2:

The West Half of Lots 7, 8 and 9, Except the North 7 feet of Lot 9 thereof, Block 1, McAlister's First Addition to the City of Canton, McPherson County, Kansas.

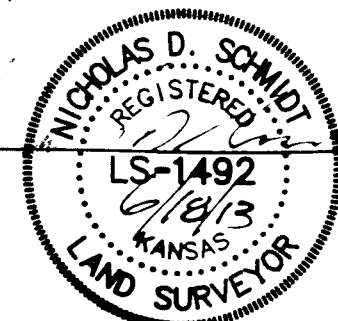
**SURVEYOR'S NOTE:** Searched entire Block 1 for existing monuments but found nothing. Located the existing curb of all 4 streets surrounding Block 1 to calculate the street centerlines and intersections. Measured/calculated distances along centerline Streets matched the measurements shown on (PS) within reasonable tolerances.

Detail  
Scale 1"=10'



#### SURVEYOR'S CERTIFICATE:

I hereby certify this plat to be a true, correct and complete representation of the property described hereon, as surveyed under my supervision, this 18th day of June, 2013.



Prepared For: <b>HELEN GOUDY</b>		Description: <b>LOTS 7-10, BLOCK 1 MCALISTER'S FIRST ADDITION CANTON, KANSAS</b>	
Prepared By: <b>GSS</b>		<b>Garber Surveying Service, P.A.</b>	
HUTCHINSON (Main Office) 2908 North Plum St. 67502 Ph. 620-665-7032 Fax 620-663-7401		McPHERSON (Branch Office) 115 East Marlin 67460 Ph. 620-241-4441 Fax 620-241-4458	
NEWTON (Branch Office) 511 North Poplar St. 67114 Ph. 316-283-5053 Fax 316-283-5073			
Drawn By: KLL	Scale: 1"=30'	Date of Field Work: June 6, 2013	Job No:
Checked By: NDS	Date: 06/18/2013	Sheet 1 of 1 Sheet(s)	<b>G2013-307</b>