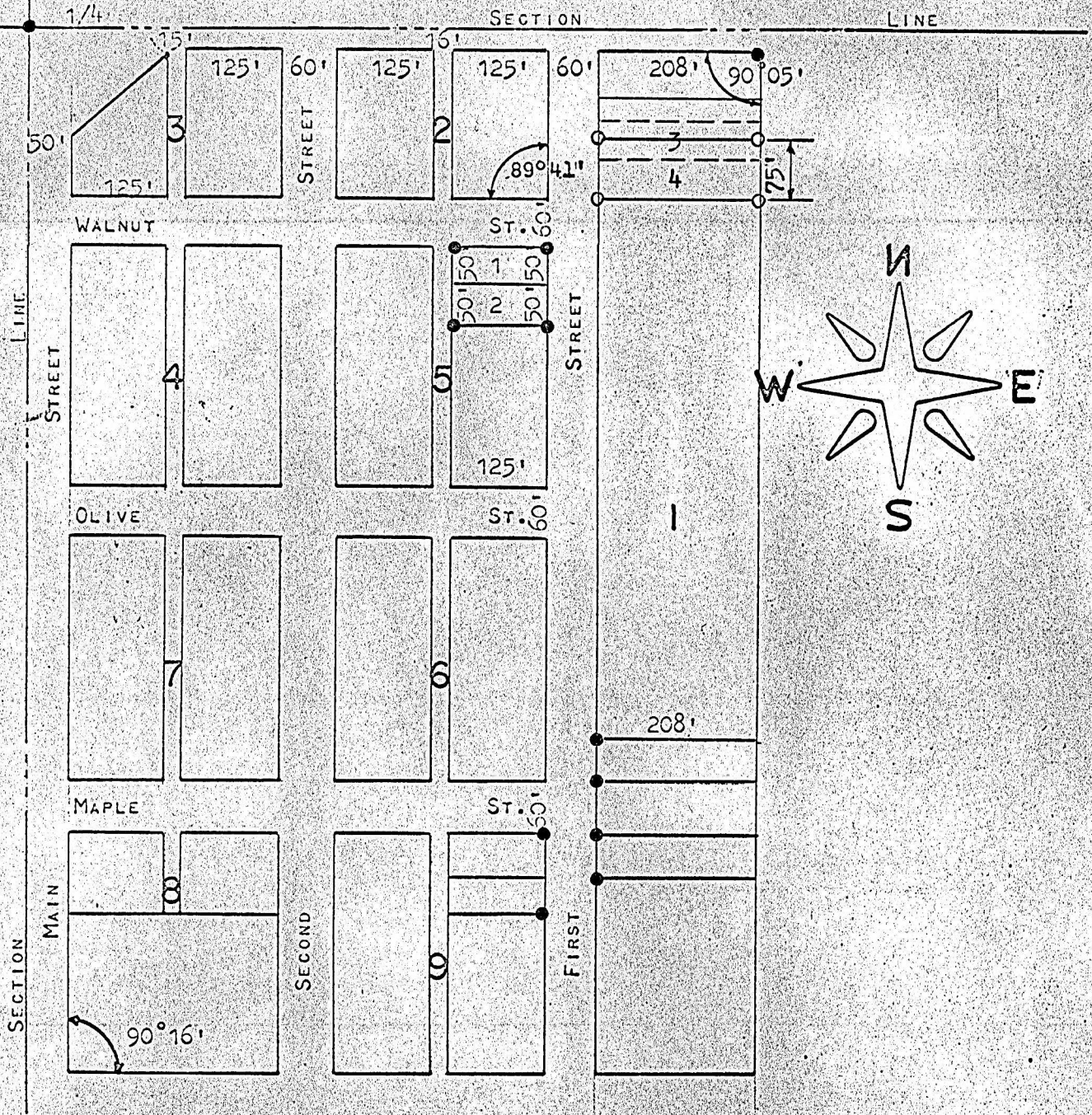


LOT 4 & SOUTH 1/2 LOT 3
BLOCK 1
INVESTMENT ADDITION
CANTON, KANSAS



- Pins Set this Survey
- Pins Set previous Survey

State of Kansas)
County of McPherson) SS

I, F. R. Rankin, County Engineer of McPherson, Kansas, do hereby certify that under my supervision a survey was made of Lot 4 and the South 1/2 of Lot 3, Block 1, Investment Addition to the City of Canton, Kansas and the above plat is a true exhibit of said survey as far as it is known to me.

Survey called for by Walter Liggett

Signed this 15 day of June, 1970

F. R. Rankin
F. R. Rankin
County Engineer
McPherson, Kansas

