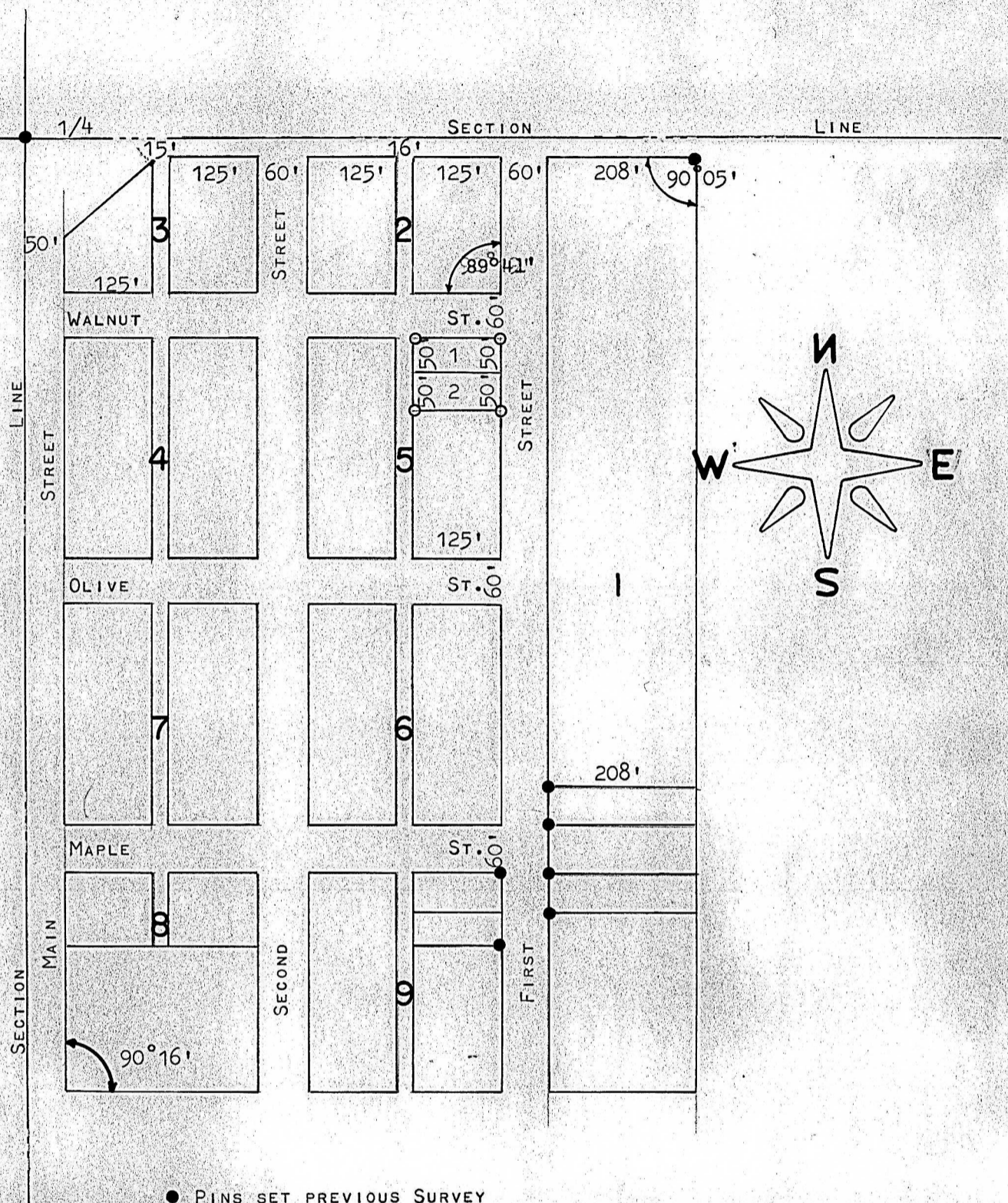


LOT 1 & 2 BLOCK 5

INVESTMENT ADD.

CANTON, KANSAS



● PINS SET PREVIOUS SURVEY

○ PINS SET THIS SURVEY

STATE OF KANSAS)
COUNTY OF McPHERSON)SS

I, FRANCIS RANKIN, COUNTY ENGINEER OF McPHERSON, KANSAS DO HEREBY CERTIFY THAT UNDER MY SUPERVISION A SURVEY WAS MADE OF LOT 1 & 2 BLOCK 5, INVESTMENT ADD. TO THE CITY OF CANTON, KANSAS, AND THE ABOVE PLAT IS A TRUE EXHIBIT OF SAID SURVEY AS FAR AS IT IS KNOWN TO ME.

SIGNED THIS 30 DAY OF JUNE, 1967.,

SURVEY CALLED FOR BY ARCHIE PHILLIS

FRANCIS RANKIN
COUNTY ENGINEER
McPHERSON, KANSAS

799
KANSAS
PROFESSIONAL ENGINEER

MICROFILM