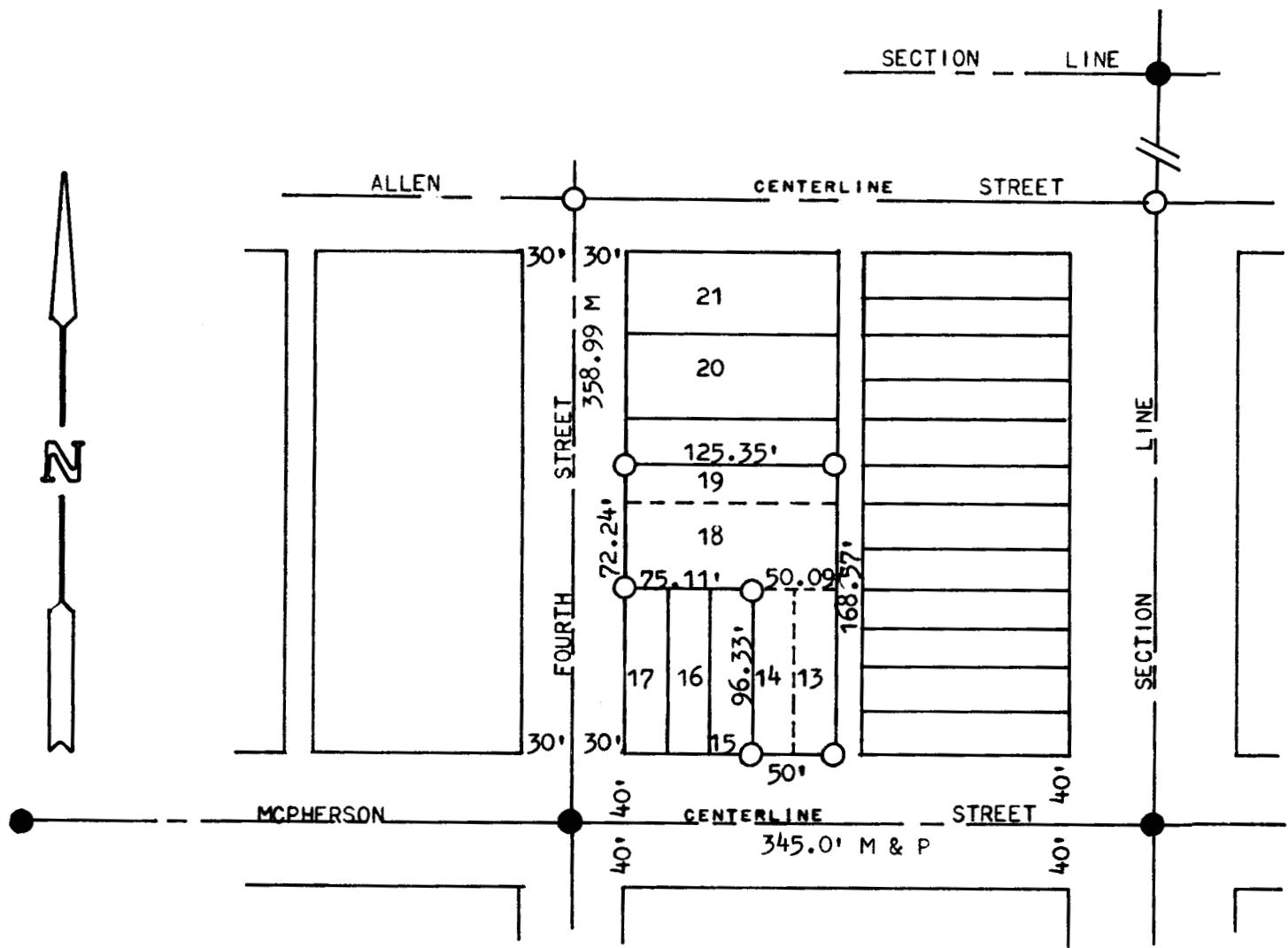


A SURVEY OF LOTS 13, 14, 18, & THE S 1/2 OF 19,
BLOCK 6, ORIGINAL TOWN, CANTON, KANSAS



- PINS FOUND THIS SURVEY
- PINS SET THIS SURVEY

STATE OF KANSAS)
COUNTY OF MCPHERSON) SS

I, MELVIN FERGUSON, COUNTY ENGINEER OF MCPHERSON COUNTY, KANSAS, DO HEREBY CERTIFY THAT UNDER MY SUPERVISION A SURVEY WAS MADE OF LOTS 13, 14, 18, AND THE SOUTH 1/2 OF LOT 19, BLOCK 6, ORIGINAL TOWNSITE OF THE CITY OF CANTON, KANSAS, AND THAT THE ABOVE PLAT IS A TRUE EXHIBIT OF SAID SURVEY AS FAR AS IT IS KNOWN TO ME.

SURVEY CALLED FOR BY CANTON REAL ESTATE.

SIGNED THIS 8th DAY OF JULY, 1974.

MELVIN FERGUSON
COUNTY ENGINEER
MCPHERSON COUNTY, KANSAS

(Professional Engineer Seal: MELVIN FERGUSON, 6772, KANSAS, PROFESSIONAL ENGINEER)