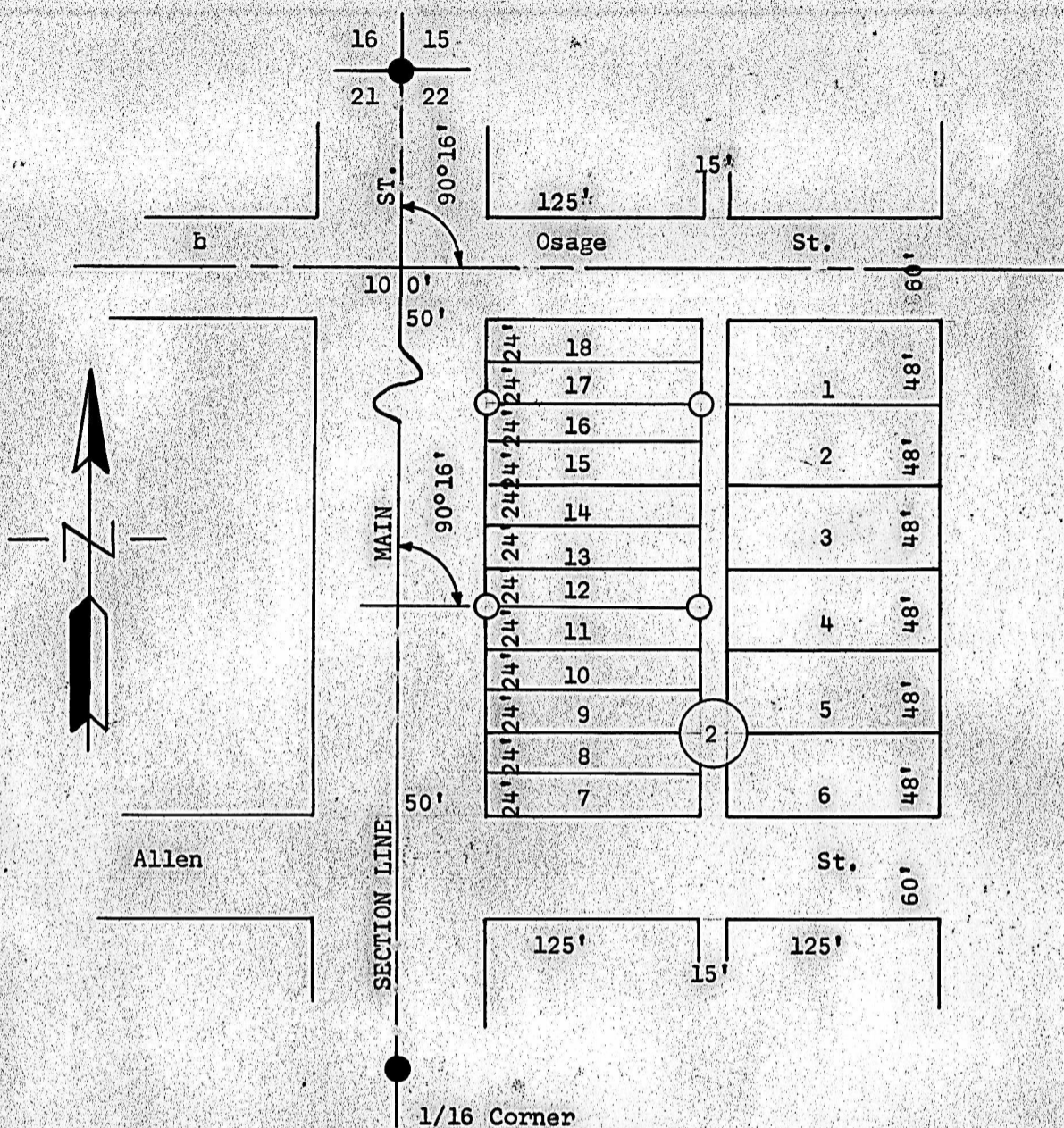


A SURVEY OF LOTS 12, 13, 14, 15, 16  
BLOCK 2, ORIGINAL TOWN  
CANTON, KANSAS



- 3/4" Pipe Set this Survey
- Pins found this survey

State of Kansas )  
County of McPherson ) SS

I, Francis R. Rankin, County Engineer, McPherson County, Kansas, do hereby certify that the above survey was made under my supervision of Lots 12, 13, 14, 15, 16, Block 2, Original Town, to the city of Canton, and that the above plat is true and correct so far as it is known to me.

Survey called for by M. D. Fisher

Signed this 29th day of May 1963

*Francis Rankin*

Francis Rankin  
County Engineer  
McPherson, Kansas



MICROFILM

# 35.00