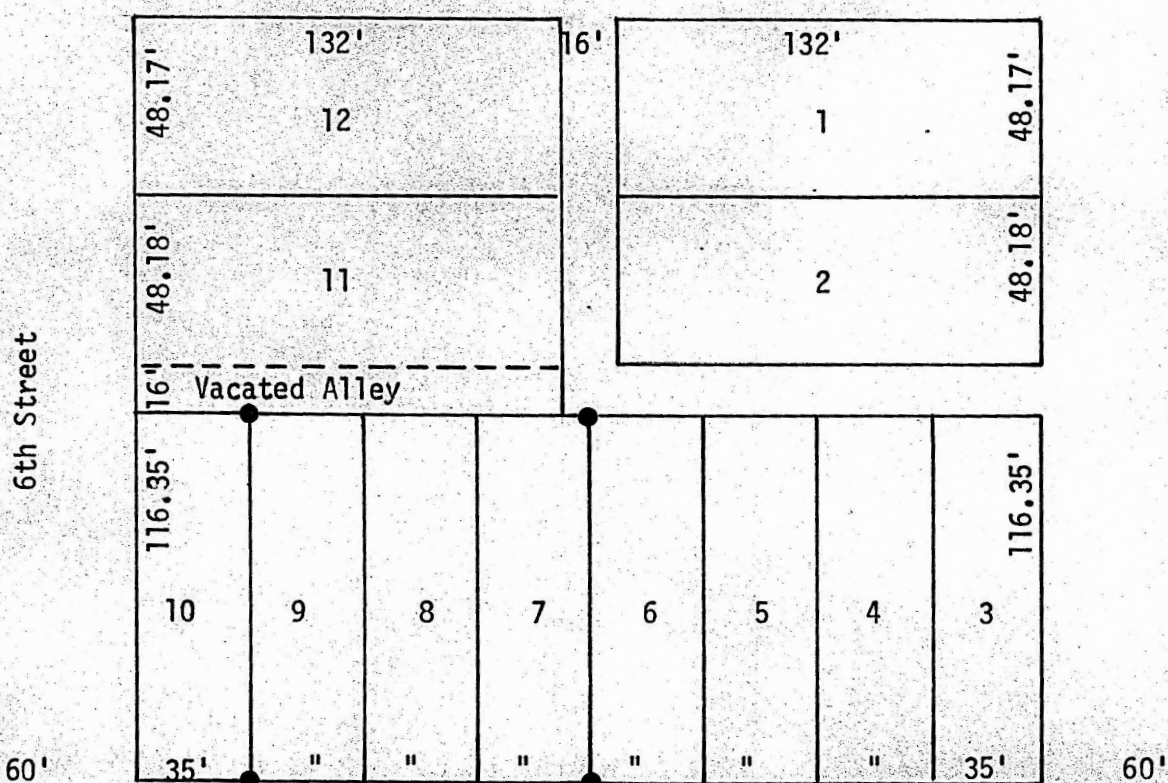


A SURVEY OF LOTS 7, 8 and 9
BLOCK 9, MC ALLISTERS ADD.
CANTON, KANSAS



● Pins Set This Survey

Note: Vacated alley along the South side of Lot No. 11 was vacated and accrued to Lot No. 11. See Misc. B, Page 1, Register of Deeds, McPherson, Kansas

State of Kansas)
County of McPherson) SS

I, F. R. Rankin, County Engineer of McPherson County, Kansas, do hereby certify that under my supervision a survey was made of Lots 7, 8 and 9 to Block 9, McAllisters Addition to the City of Canton, Kansas. The above plat is a true exhibit of said survey as far as it is known to me.

Survey requested by Harvey Mickell

Signed this 20 day of July, 1973

F. R. Rankin
F. R. Rankin, P. E.
Dir. of P. W. & Co. Engg.
McPherson, Kansas

PROFESSIONAL ENGINEER
R. RANKIN
LICENSED
1979
KANSAS

MICROFILM