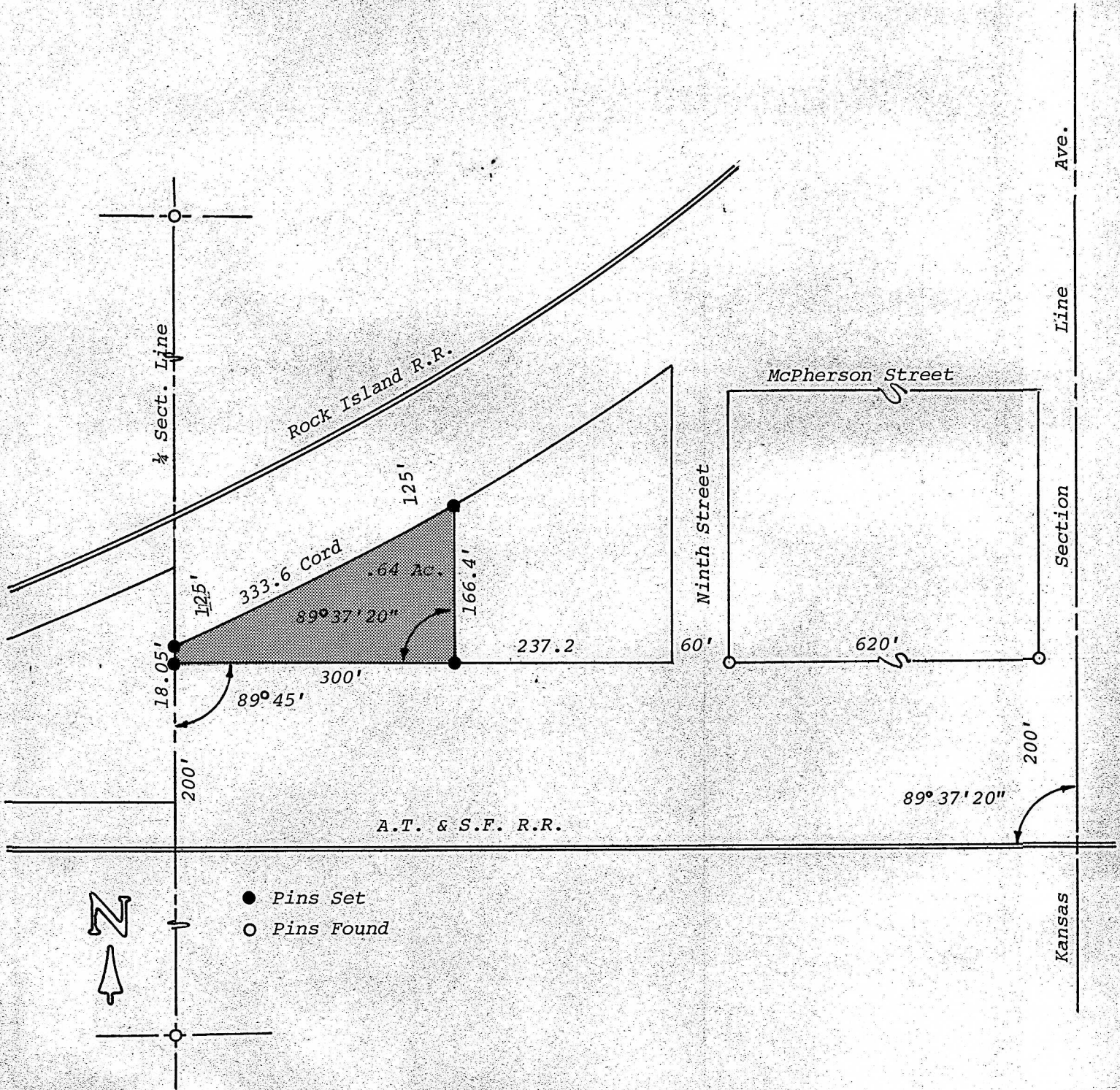


A SURVEY IN BLOCK 111,
FAIRVIEW ADDITION
CANTON, KANSAS



State of Kansas)
County of McPherson) SS

I, Melvin Ferguson, County Engineer of McPherson County, Kansas, do hereby certify that under my supervision a survey was made of the West 300 feet of Block 11, Fairview Addition to the City of Canton, Kansas, and the above plat is a true exhibit of said survey as far as it is known to me.

Survey called for by the City of Canton.

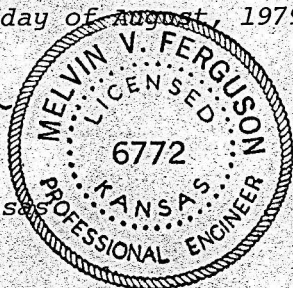
Signed on this 2nd day of August, 1979.

Melvin Ferguson
Melvin Ferguson P E

Meivin Ferguson, P.E.
County Engineer

County Engineer

McPherson County, Kansas



MICROFILM