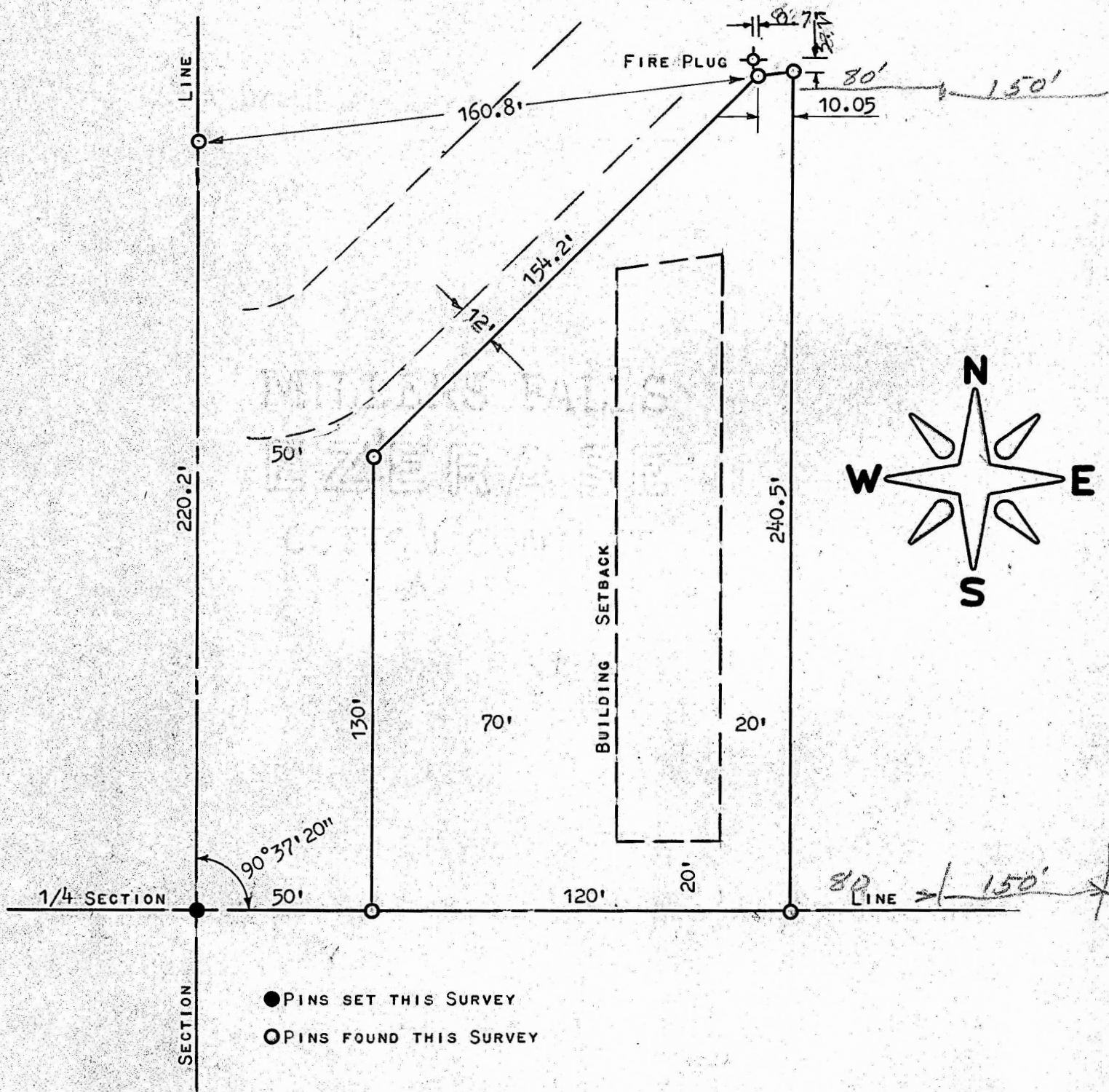


A SURVEY OF THE WEST 120 FEET OF BLOCK 3  
CHAMPLIN ADD. TO THE CITY OF McPHERSON, KANSAS



STATE OF KANSAS )  
COUNTY OF McPHERSON ) ss

I, F. R. RANKIN, COUNTY ENGINEER OF McPHERSON CO., KANSAS,  
DO HEREBY CERTIFY THAT UNDER MY SUPERVISION A SURVEY WAS MADE  
OF THE WEST 120 FEET OF BLOCK 3, CHAMPLIN ADDITION TO THE CITY  
OF McPHERSON, KANSAS, AND THE ABOVE PLAT IS A TRUE EXHIBIT  
OF SAID SURVEY AS FAR AS IT IS KNOWN TO ME.

SURVEY CALLED FOR BY CHISHOLM REAL ESTATE

SIGNED ON THIS 30 DAY OF APRIL, 1973.

*F. R. Rankin*  
F. R. RANKIN

COUNTY ENGINEER  
McPHERSON CO., KANSAS



MICROFILM