

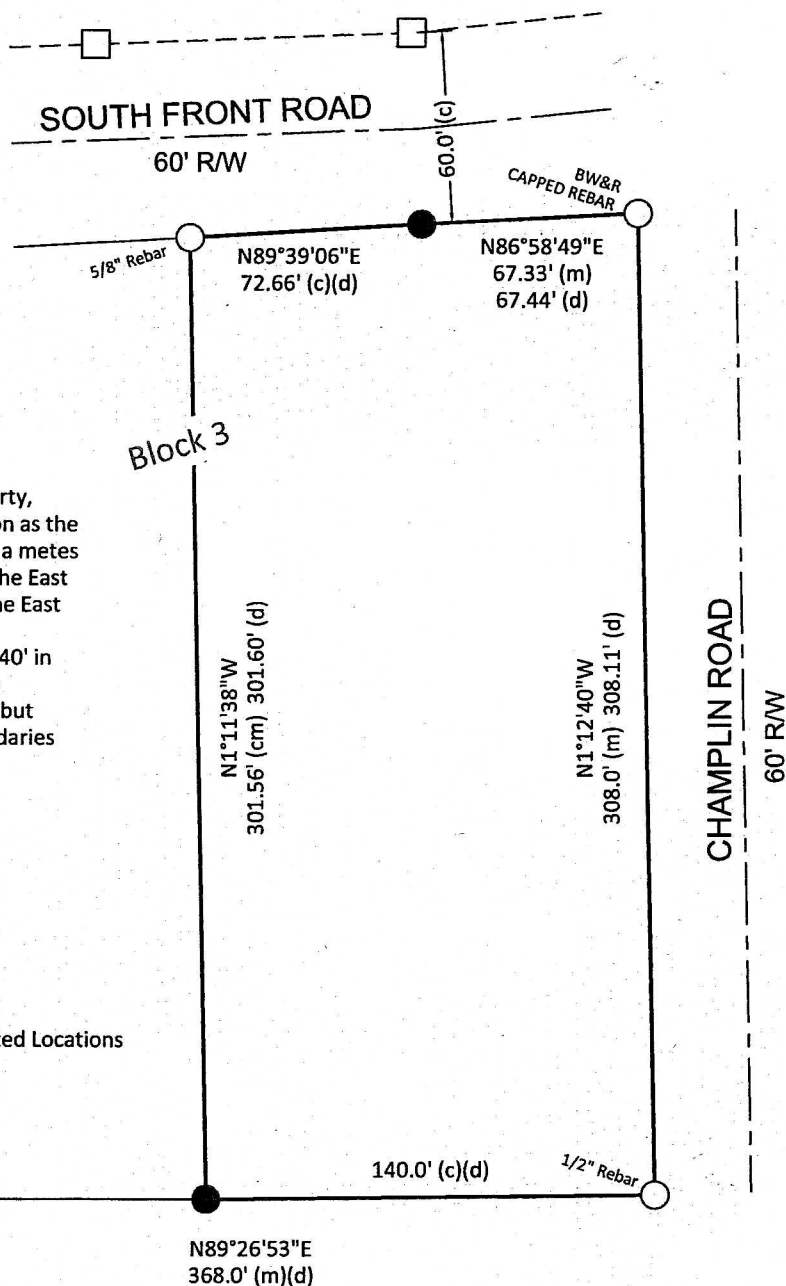
SURVEY FOR: Kedis Enterprises

PURPOSE OF SURVEY: Boundary Survey at 2118 E. Kansas, City of McPheson

DATE OF FIELD WORK: August 9, 2016

PROJECT NUMBER: PLI16107

DESCRIPTION: The East 140.0 feet of Block Three (3), Champlin Addition to the City of McPherson, located in Section Twenty-six (26), Township Nineteen (19) South, Range Three (3) West of the Sixth Principle Meridian.



#### SURVEY NOTES

The Current Deed of this property, D263/102, states the description as the East 140' of Block 3 and also as a metes and bound. The properties in the East half of this block are all using the East 140' of Block 3 as part of their description, so I held the East 140' in our description. The difference between the two was minimal, but might be note worthy for boundaries tying to this one.

#### LEGEND

- - Found Monuments
- - Set PLI Capped Rebar
- (M) - Measured Distances
- (C) - Calculated Distances
- (D) - Deeded Distances
- (CM) - Measured from Calculated Locations

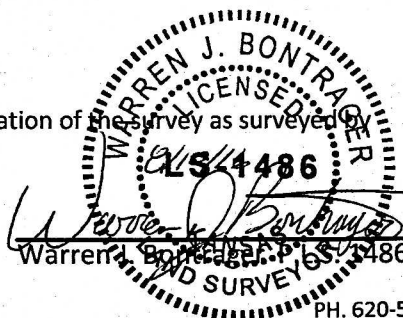
KVE CLS 20  
CAPPED REBAR

#### SURVEYOR'S CERTIFICATE:

I hereby certify this survey to be true, correct and complete representation of the survey as surveyed by me, this 10th day of August, 2016.

Prairie Landworks, Inc.  
McPherson, KS 67460

905 N.Vanguard St.



Scale 1" = 60'  
Basis of Bearings  
are Assumed

PH. 620-504-5049