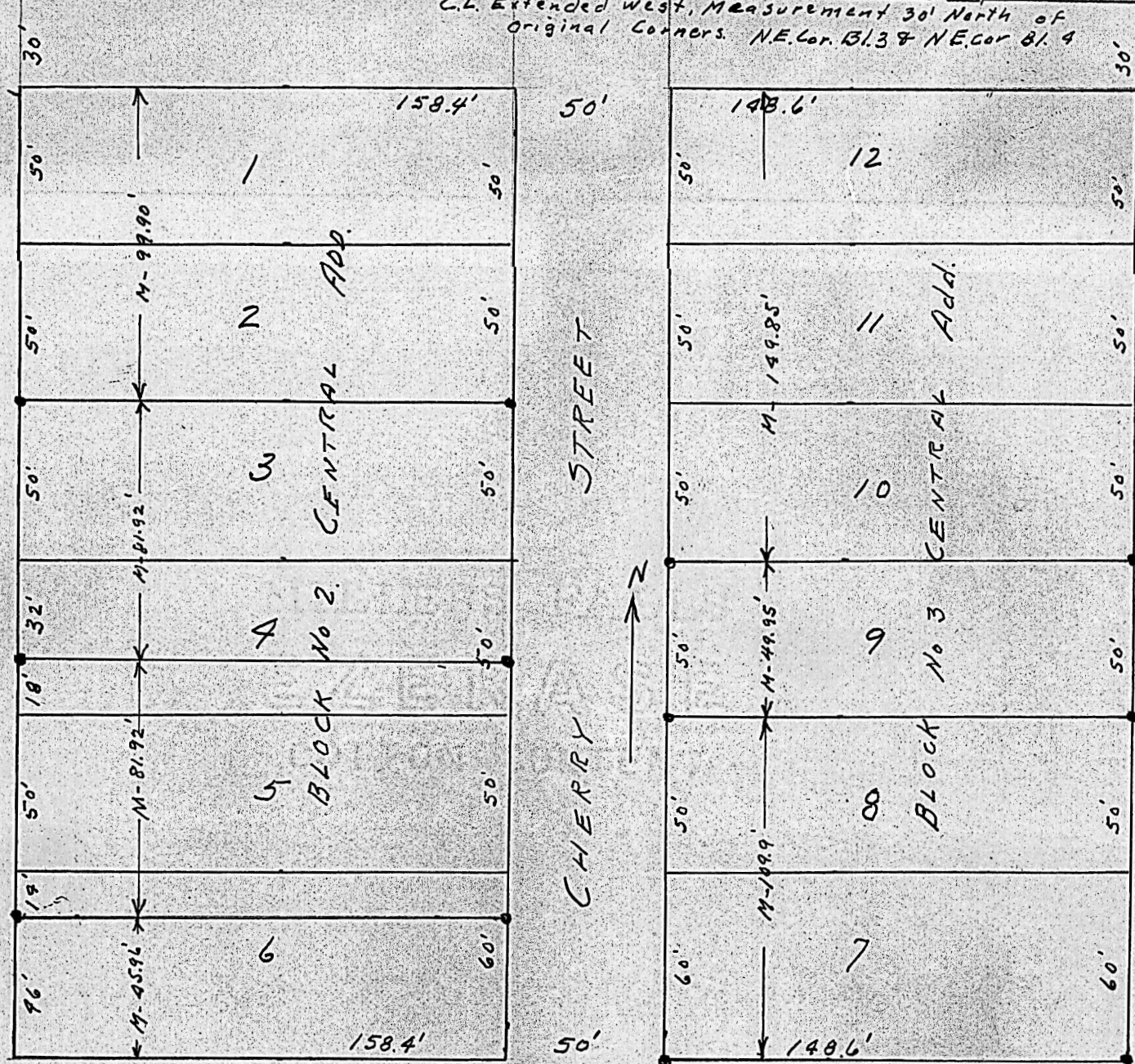


C.L. Extended West, Measurement 30' North of
Original Corners. N.E. Cor. B1.3 & N.E. Cor. B1.4



State of Kansas, County of McPherson, ss.

I, G.D. Johnson, Licensed Civil Engineer of the State of Kansas, do hereby certify that I did on the 22nd. day of September, 1959 survey the following lots and parts of lots in Central Addition of the City of Lindsborg, Kansas.

Lot 3 and north 32 ft. lot 4 Block No. 2.

South 18 ft. lot 4, lot 5 and north 14 ft. lot 6 Block No. 2.

Lots 7 and 8, Block No. 3.

Lot 9 Block No. 3.