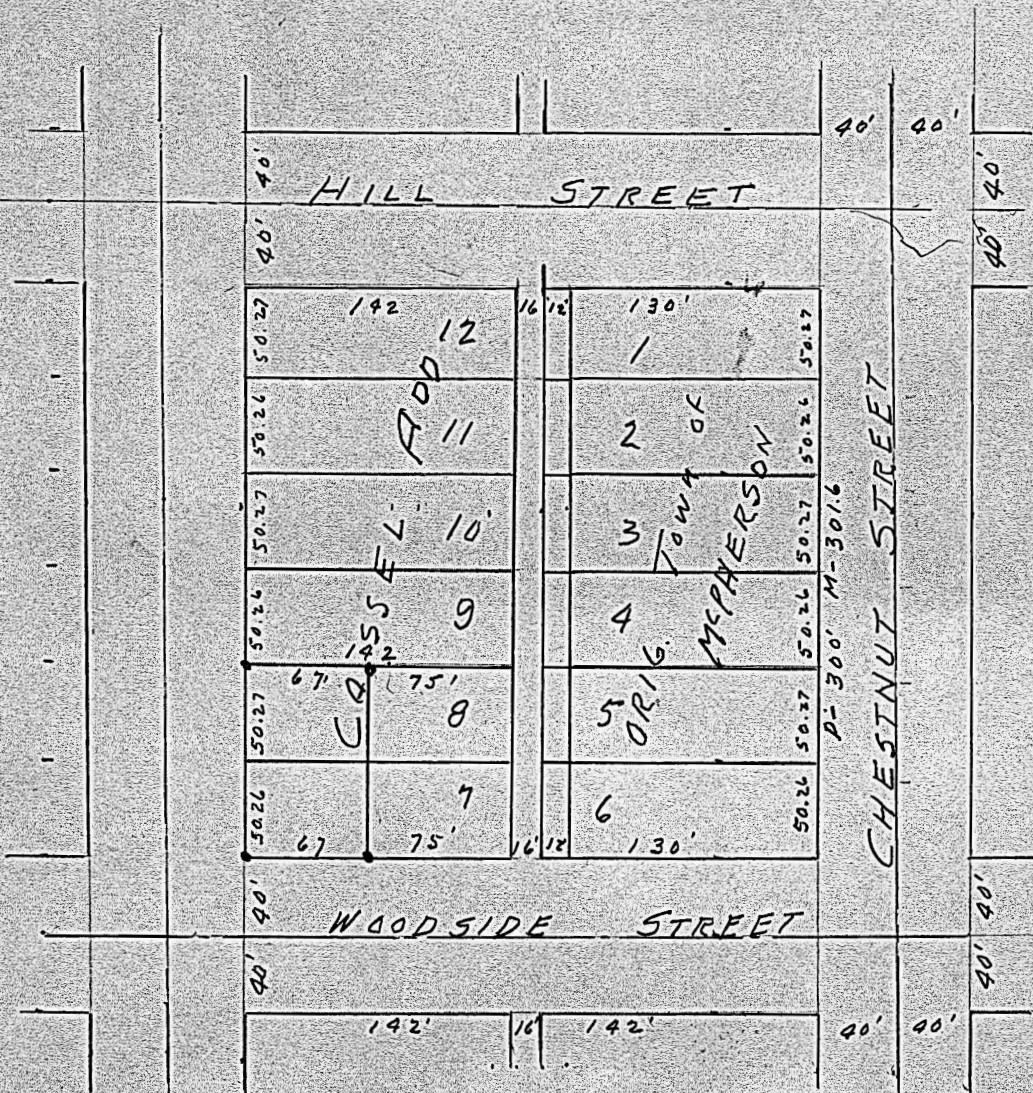


Block 15, Cassel Addition, McPherson, Kansas.



State of Kansas, County of McPherson, SS.

I, G.D. Johnson, Licensed Civil Engineer of the State of Kansas, do hereby certify that I did on the 31st. day of March, 1959 survey the west 67 feet of Lots 7 & 8, Block 15, Cassel's Addition to the City of McPherson Kansas and that accompanying plat is a true exhibit of said survey.



*G.D. Johnson*