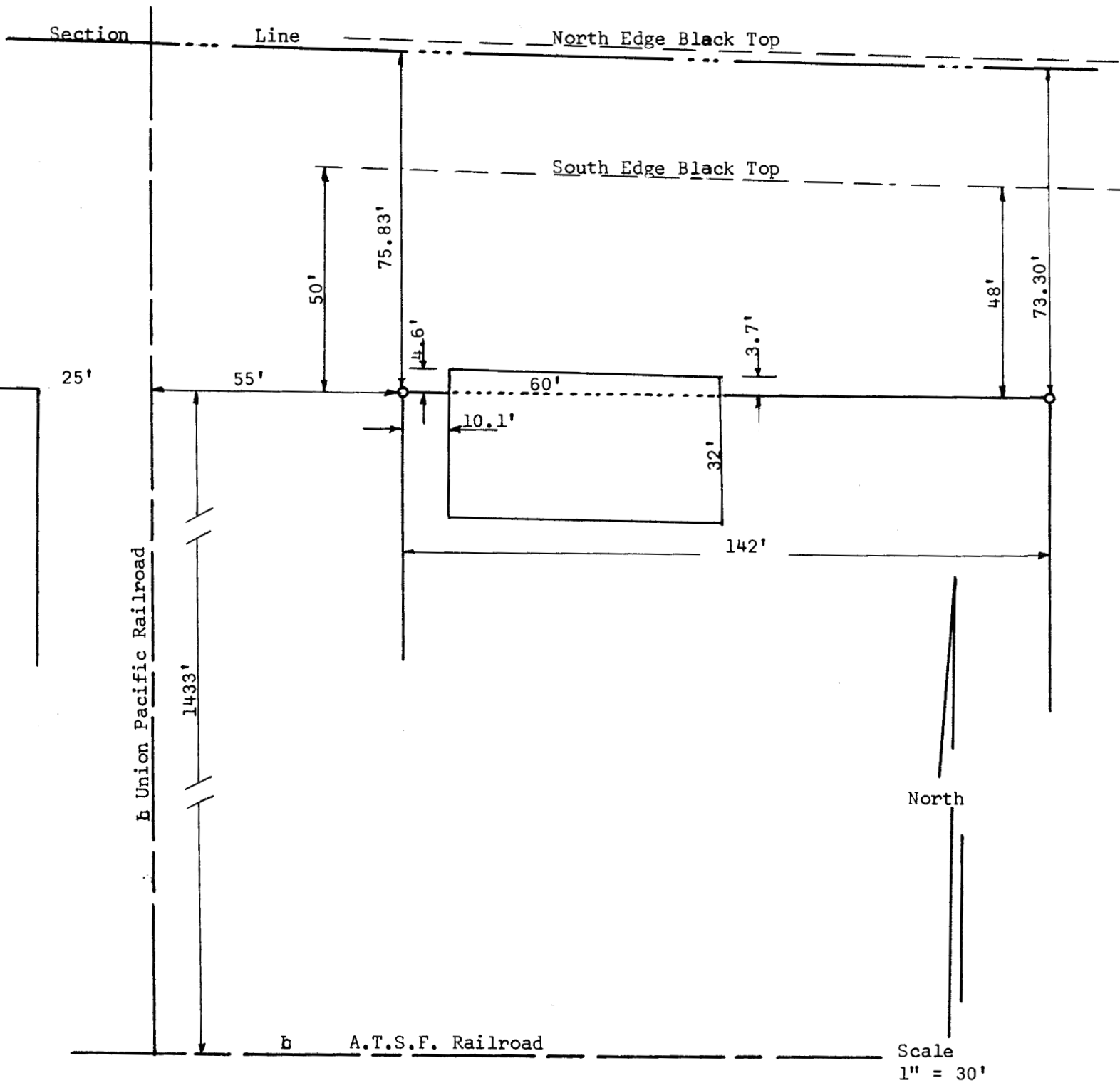


NORTH LINE BLOCK 1/2 10
CASSEL ADDITION
MC PHERSON, KANSAS



○ Pins set this survey

State of Kansas)
County of McPherson) SS

I, Francis R. Rankin, Professional Engineer, of the State of Kansas, do hereby certify that under my supervision a survey was made to locate the North Line of Block 1/2 10 Cassel Addition to the City of McPherson, Kansas and the above plat is a true exhibit of said survey as far as it is known to me.

Signed this 15th day March 1965

Francis R. Rankin

Francis R. Rankin
Professional Engineer
State of Kansas

