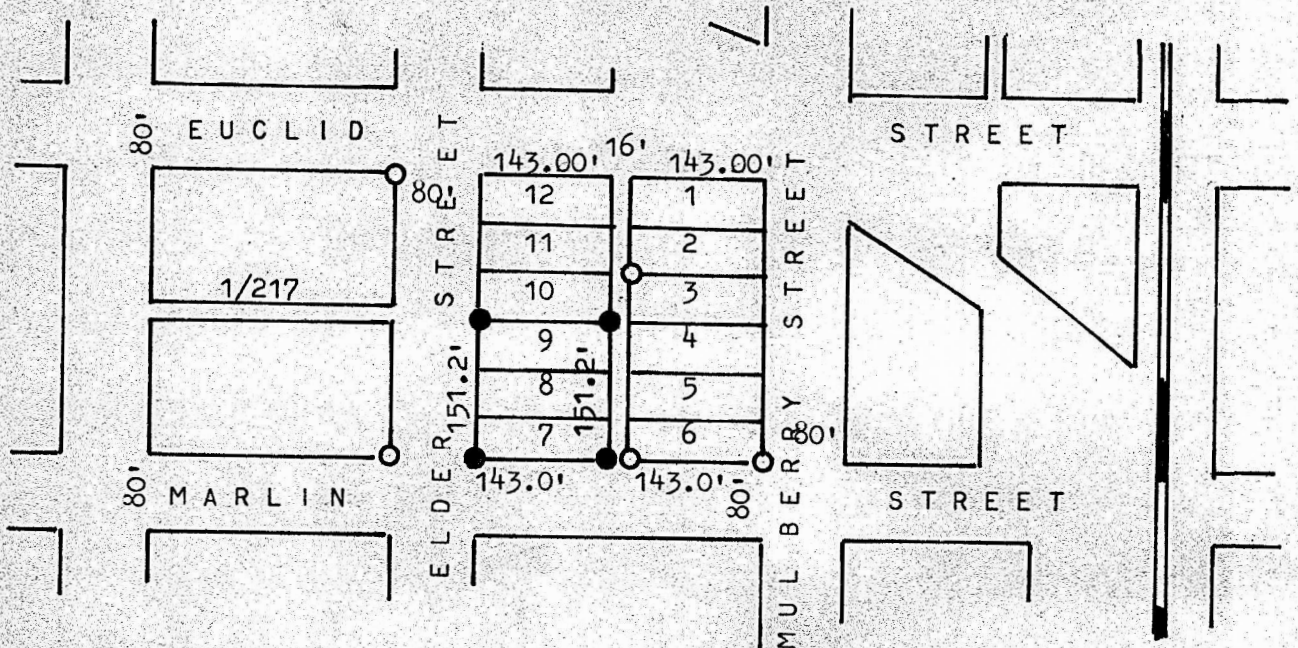


A SURVEY OF LOTS 7, 8, & 9, BLOCK 60
CASSEL ADDITION, MCPHERSON, KANSAS



- PINS SET THIS SURVEY
- PINS FOUND THIS SURVEY

STATE OF KANSAS)
COUNTY OF MCPHERSON) SS

I, MELVIN FERGUSON, PROFESSIONAL ENGINEER OF THE STATE OF KANSAS DO
HEREBY CERTIFY THAT UNDER MY SUPERVISION A SURVEY WAS MADE OF LOTS
7, 8, & 9, BLOCK 60, CASSEL ADDITION TO THE CITY OF MCPHERSON, KANSAS,
AND THAT THE ACCOMPANYING PLAT IS A TRUE EXHIBIT OF SAID SURVEY.

SURVEY CALLED FOR BY TERRY ELDER

SIGNED THIS 10th DAY OF MAY, 1977

MELVIN FERGUSON
PROFESSIONAL ENGINEER
MCPHERSON, KANSAS

