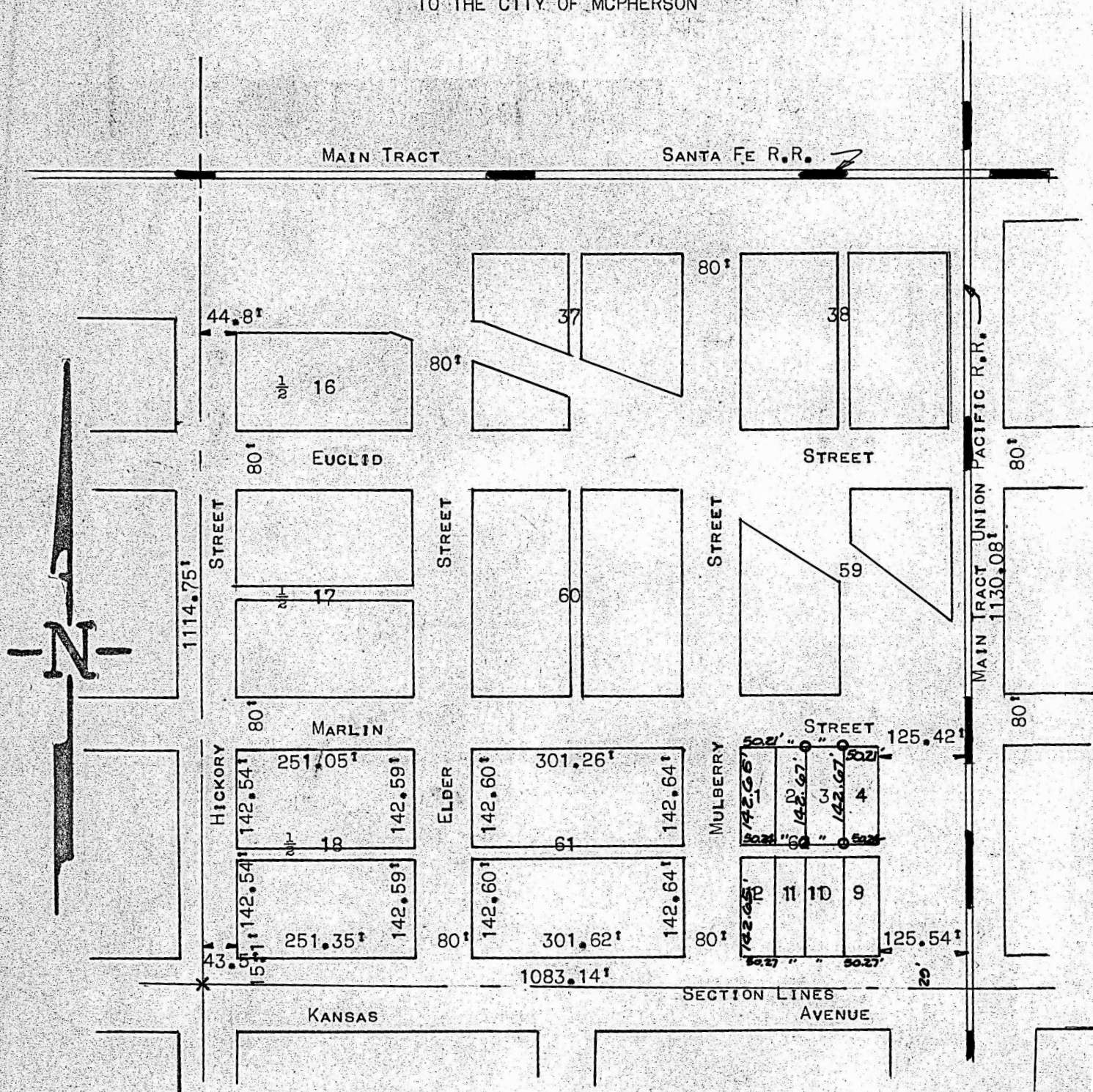


A SURVEY OF LOT 3 BLOCK 62 CASSEL ADDITION
TO THE CITY OF MCPHERSON



PINS SET THIS SURVEY

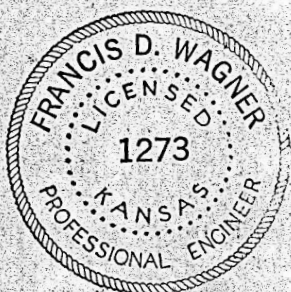
STATE OF KANSAS)
COUNTY OF MCPHERSON) SS

I, FRANCIS D. WAGNER COUNTY ENGINEER OF MCPHERSON COUNTY KANSAS, DO HEREBY CERTIFY THAT I DID CAUSE TO BE DONE ON THE 8TH DAY OF OCTOBER, 1956 A SURVEY OF LOT 3 BLOCK 62 CASSEL ADDITION TO THE CITY OF MCPHERSON, KANSAS, AND THAT THE ACCOMPANYING PLAT IS A TRUE EXHIBIT OF SAID SURVEY.

Francis D. Wagner

FRANCIS D. WAGNER
COUNTY ENGINEER
MCPHERSON COUNTY

OCTOBER 16, 1956



MICROFILM