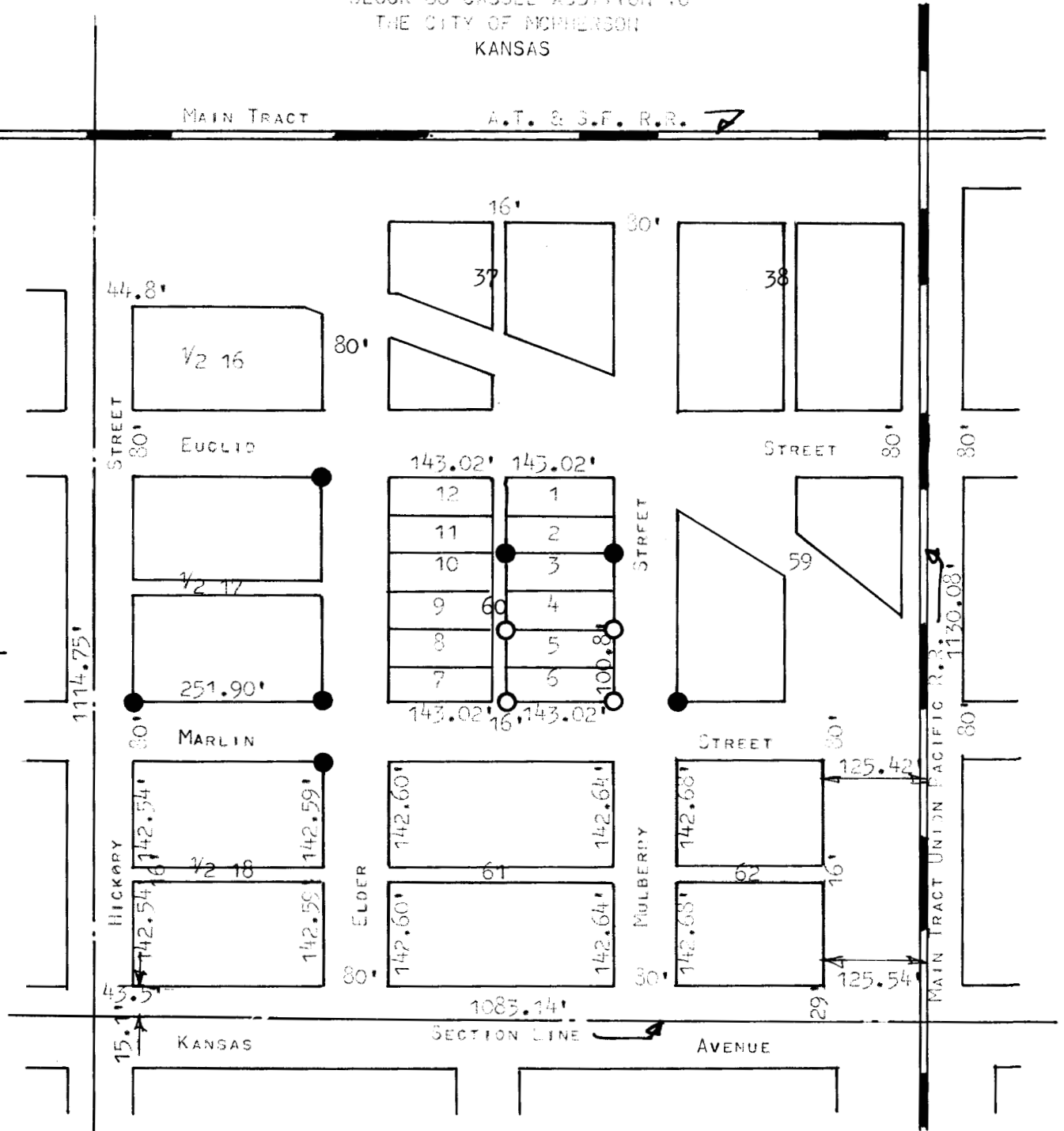


A SURVEY OF LOTS 5 & 6
BLOCK 60 CASSEL ADDITION TO
THE CITY OF McPHERSON
KANSAS



PINS PLACED THIS SURVEY

PINS FOUND THIS SURVEY

STATE OF KANSAS) ss
COUNTY OF McPHERSON)

I, FRANCIS D. WAGNER, COUNTY ENGINEER OF McPHERSON COUNTY, KANSAS, DO HEREBY CERTIFY THAT I DID CAUSE TO BE DONE ON THE 25TH DAY OF AUGUST, 1959 A SURVEY OF LOTS 5 & 6 BLOCK 60 CASSEL ADDITION TO THE CITY OF McPHERSON, KANSAS, AND THAT THE ACCOMPANYING PLAT IS A TRUE EXHIBIT OF SAID SURVEY.

Francis D. Wagner

FRANCIS D. WAGNER
COUNTY ENGINEER
McPHERSON COUNTY

27 AUGUST, 1959

NOTE: CENTER LINE OF MULBERRY STREET AND MARLIN STREET PAVEMENT HAS BEEN ACCEPTED AS TRUE PLATTED CENTER LINE OF PAST SURVEYS AND THE SAME WAS USED THIS SURVEY.

RECORDED

INDEXED