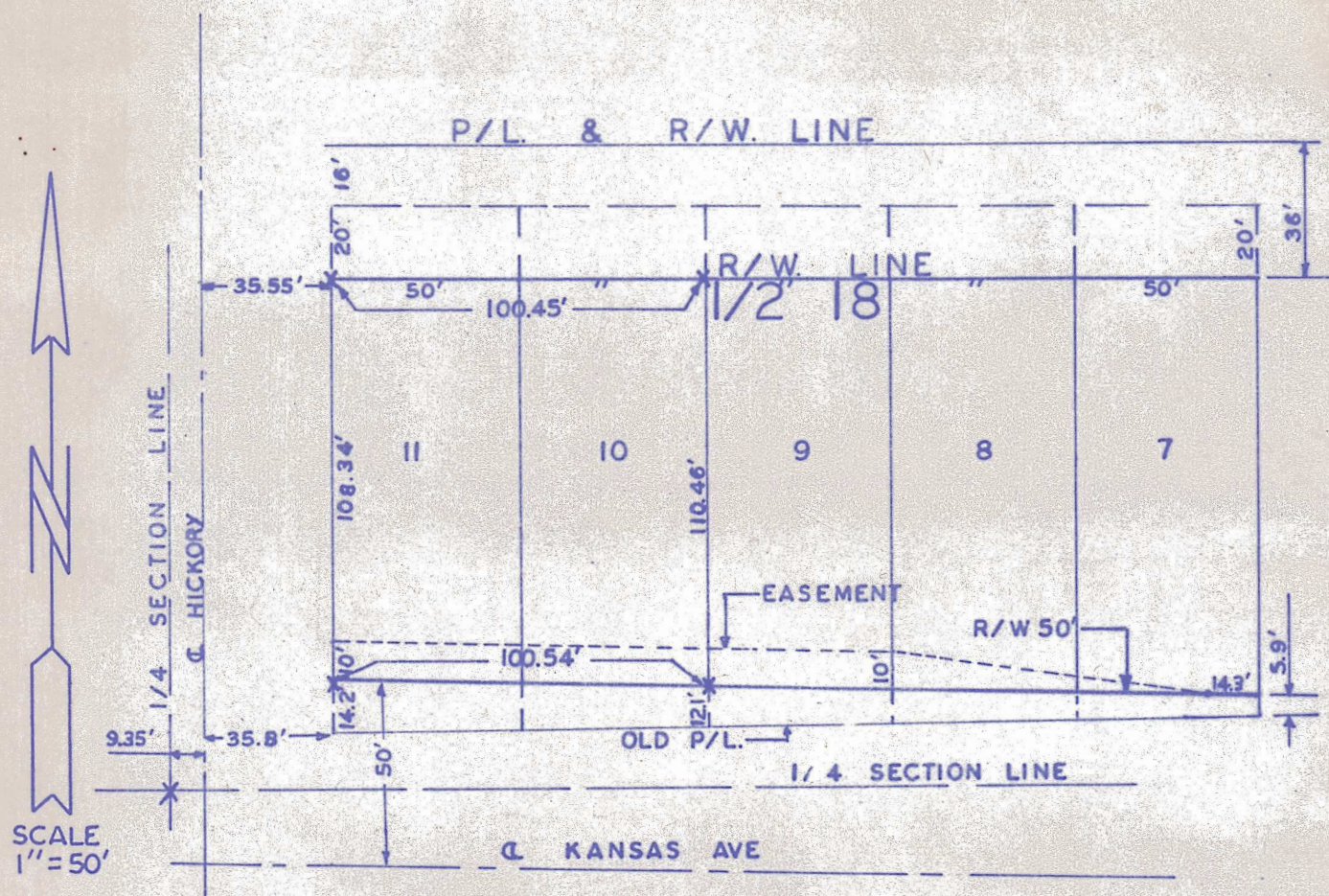


## CASSEL

## ADDITION



X-PINS SET

DESCRIPTION: Lots 10 and 11, Block 1/2 18 Cassel Addition to the City of McPherson, Kansas.

CERTIFICATION: I, CHARLES E. STACY, CITY ENGINEER OF THE CITY OF McPHERSON, KANSAS, DO HEREBY CERTIFY THAT I DID CAUSE TO BE DONE THE 26<sup>th</sup> DAY OF JULY, 1963, A SURVEY TO ESTABLISH THE CORNERS OF LOTS 10 AND 11, BLOCK 1/2 18, OF CASSEL ADDITION, CITY OF McPHERSON, KANSAS. THE ABOVE PLAT IS A TRUE EXHIBIT OF SAID SURVEY.

SURVEY REQUESTED BY - CARL EDWARDS

JULY 26, 1963

*Charles E. Stacy*  
CHARLES E. STACY  
CITY ENGINEER

