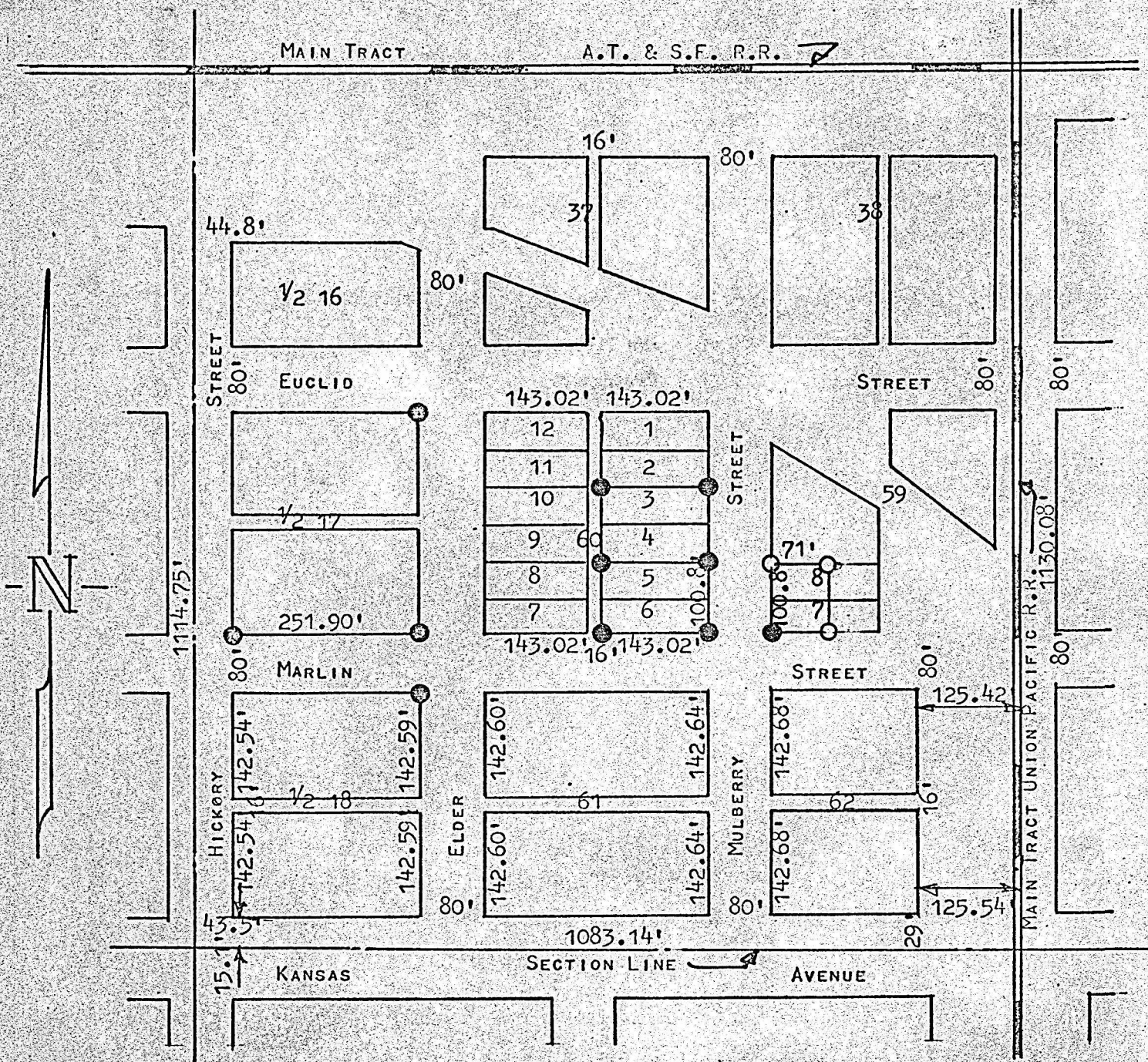


SURVEY OF W¹/₂ LOT 7 & 8 BLOCK 59
CASSEL ADDITION
MC PHERSON KANSAS.



- PINS SET PREVIOUS SURVEY
- PINS SET THIS SURVEY

STATE OF KANSAS)
COUNTY OF MCPHERSON) SS

I, F. R. RANKIN, PROFESSIONAL ENGINEER OF THE STATE OF KANSAS, DO HEREBY CERTIFY THAT UNDER MY SUPERVISION A SURVEY WAS MADE OF THE W¹/₂ LOT 7 & 8 BLOCK 59, CASSEL ADDITION TO THE CITY OF MCPHERSON, KANSAS AND THE ABOVE PLAT IS A TRUE EXHIBIT OF SAID SURVEY AS FAR AS IT IS KNOWN TO ME.

SURVEY REQUESTED BY GENE CULVER

SIGNED THIS 16 DAY OF OCTOBER, 1972

F. R. Rankin
F. R. RANKIN
PROFESSIONAL ENGINEER
MCPHERSON, KANSAS

