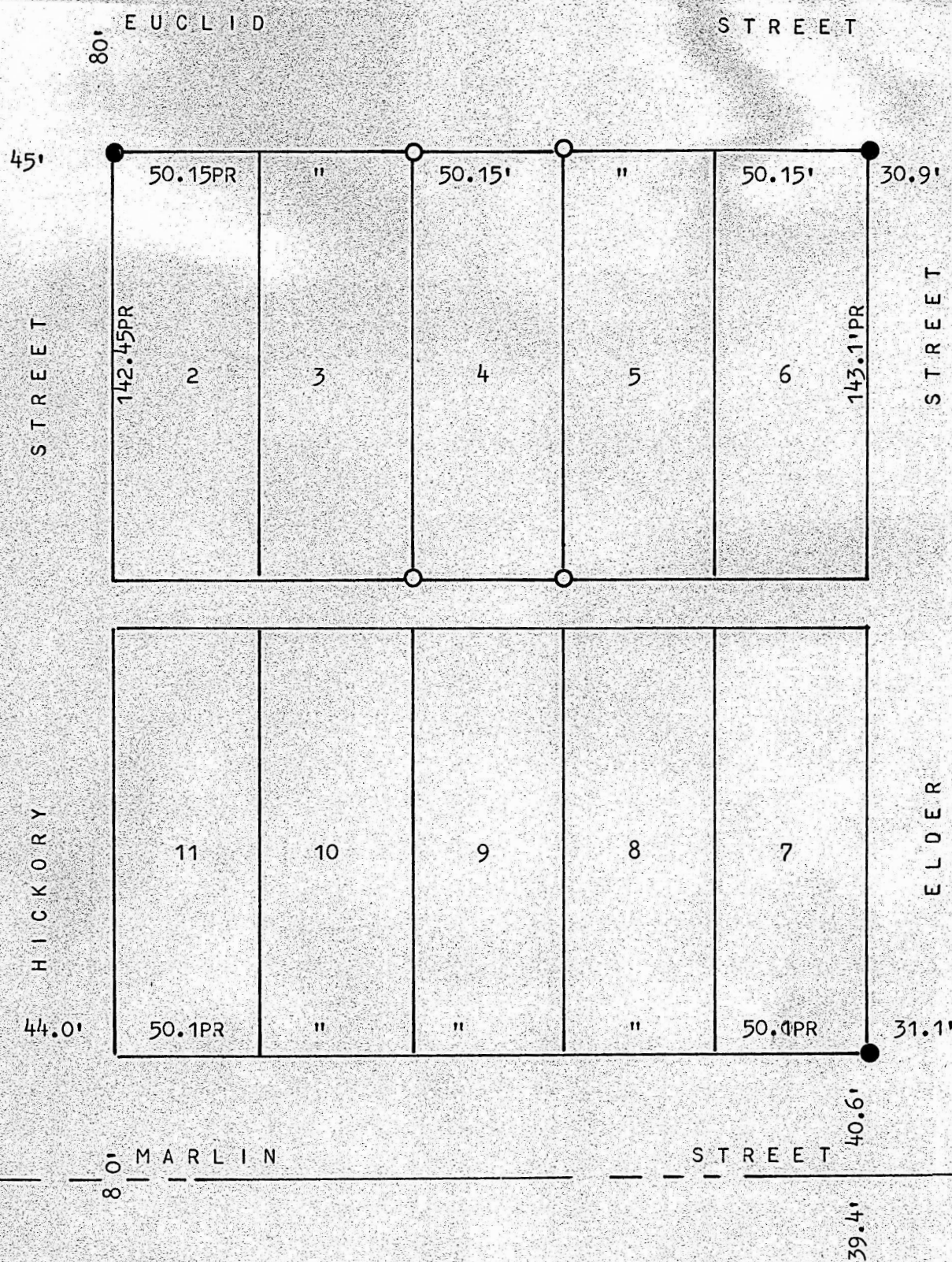


A SURVEY OF LOT 4, 1/2 BLOCK 17, CASSEL ADDITION
MCPHERSON, KANSAS



- PINS FOUND THIS SURVEY
- PINS SET THIS SURVEY

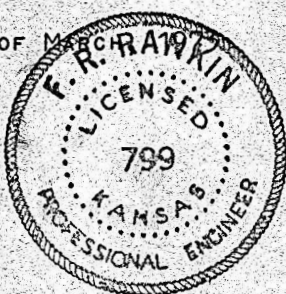
STATE OF KANSAS)
COUNTY OF MCPHERSON) SS

I, FRANCIS RANKIN, PROFESSIONAL ENGINEER OF THE STATE OF KANSAS DO
HEREBY CERTIFY THAT UNDER MY SUPERVISION A SURVEY WAS MADE OF LOT 4,
BLOCK 1/2 17, CASSEL ADDITION, TO THE CITY OF MCPHERSON, KANSAS, AND
THE ABOVE PLAT IS A TRUE EXHIBIT OF SAID SURVEY AS FAR AS IT IS KNOWN
TO ME.

SURVEY CALLED FOR BY CHARLES PETRIK

SIGNED THIS 13 DAY OF MARCH 1977

Francis Rankin
FRANCIS RANKIN
PROFESSIONAL ENGINEER
MCPHERSON, KANSAS



MICROFILM