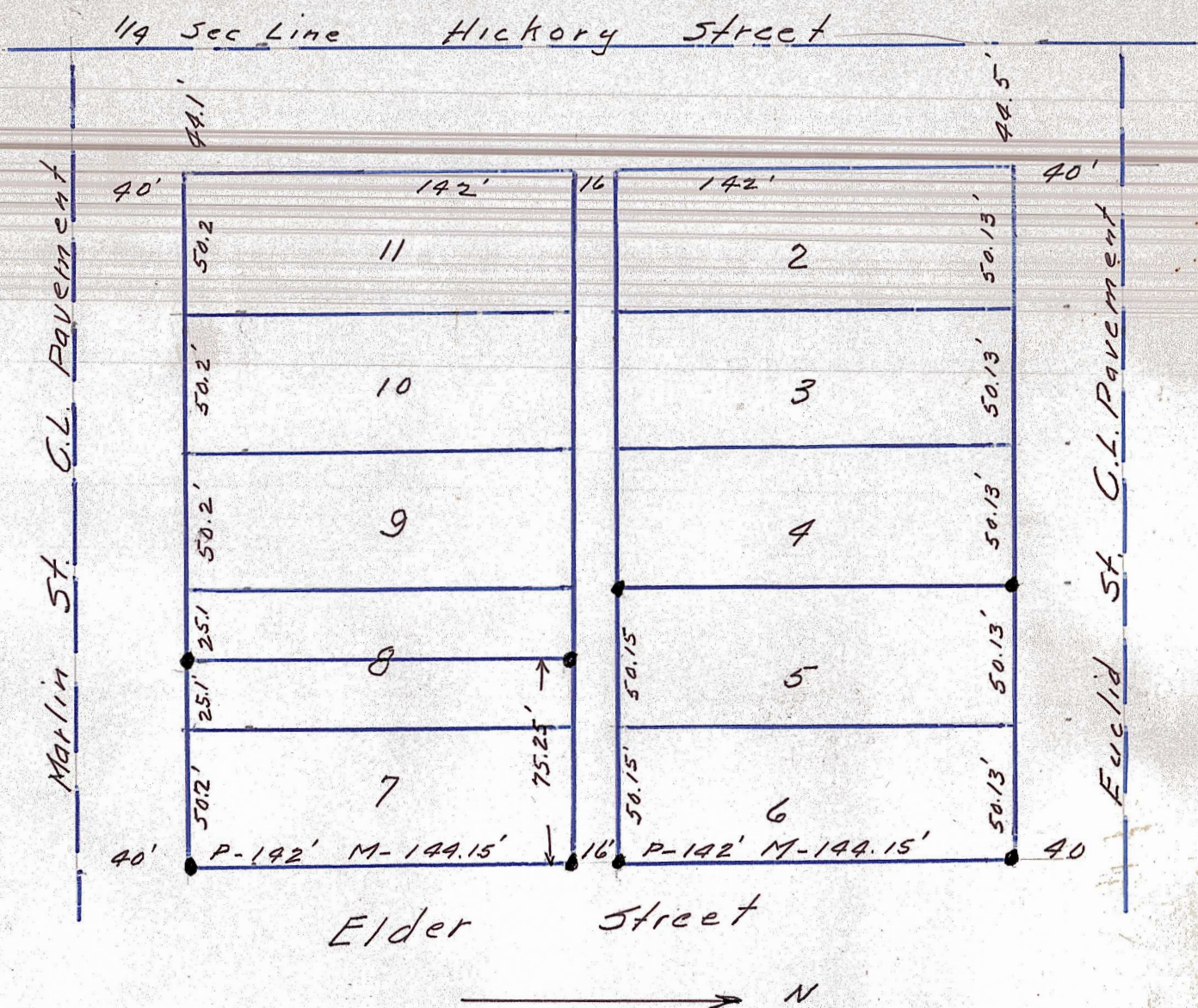


Block  $\frac{1}{2}$  17, Cassel Addition, McPherson, Kansas.



State of Kansas, County of McPherson, SS.

I, G.D. Johnson, Licensed Civil Engineer of the State of Kansas, do hereby certify that I did on the 25th day of July 1957 survey Lots 5 and 6 and Lot 7 and East Half lot 8, Block  $\frac{1}{2}$  17, Cassel Addition to the City of McPherson, Kansas.

I also certify that accompanying plat is a true exhibit of said off-said survey?

G.D. Johnson

