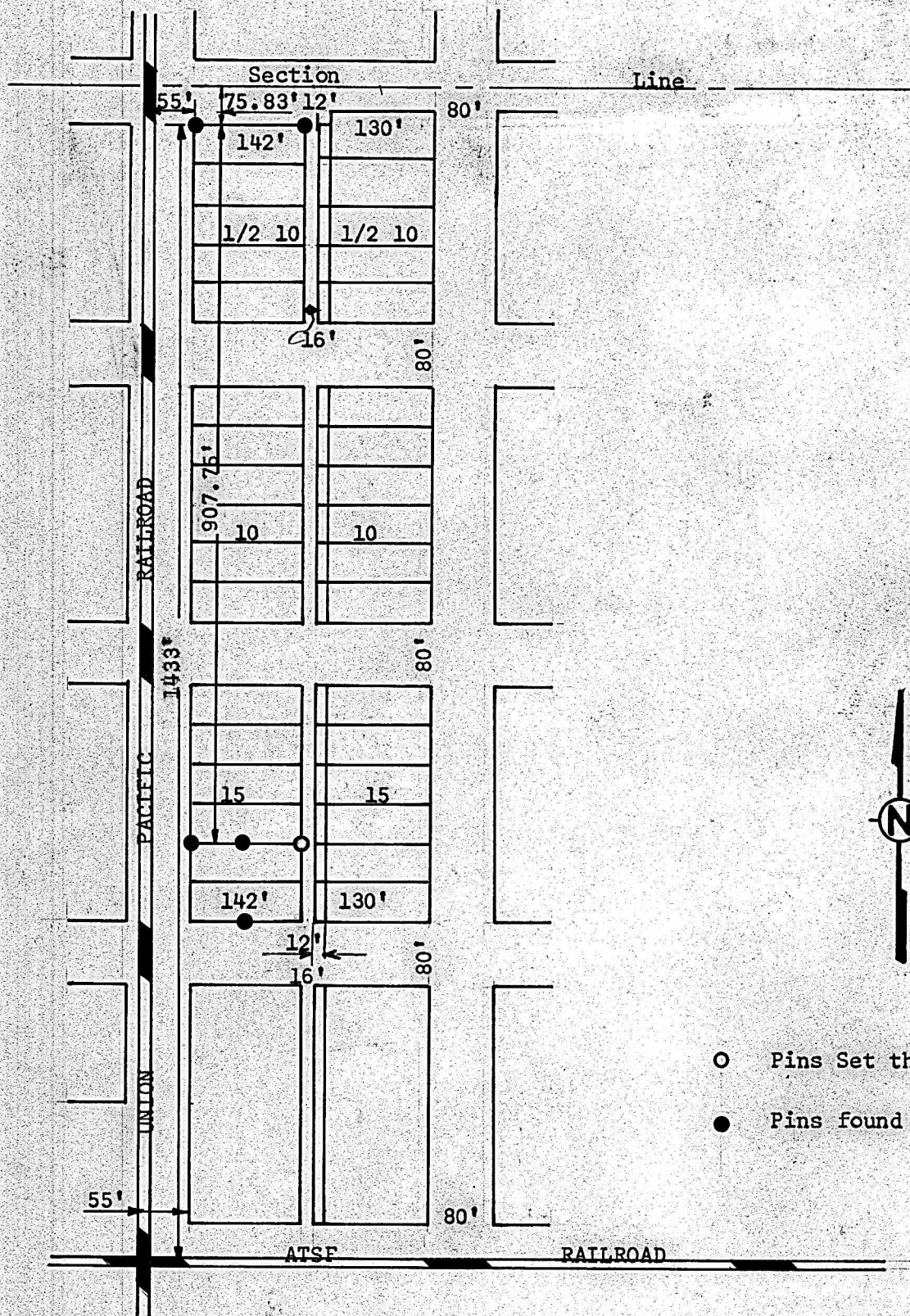


A SURVEY OF BLOCKS 1/2 10, 10, & Lots 9,10,11,12
OF BLOCK 15, CASSELL ADDITION, MCPHERSON, KANSAS



State of Kansas)
County of McPherson) SS

I, F. R. Rankin, County Engineer, of the State of Kansas, do hereby certify that under my supervision a survey was made of Blocks 1/2 10, 10 and Lots 9, 10, 11 and 12 of Block 15, Cassel Addition to the city of McPherson, Kansas. The above plat is a true exhibit of said survey as far as it is known to me.

Survey called for by King's Moving & Storage

Signed this 10 day of April 1967

MICROFILM 7

F. R. Rankin
County Engineer
McPherson County, Kansas

