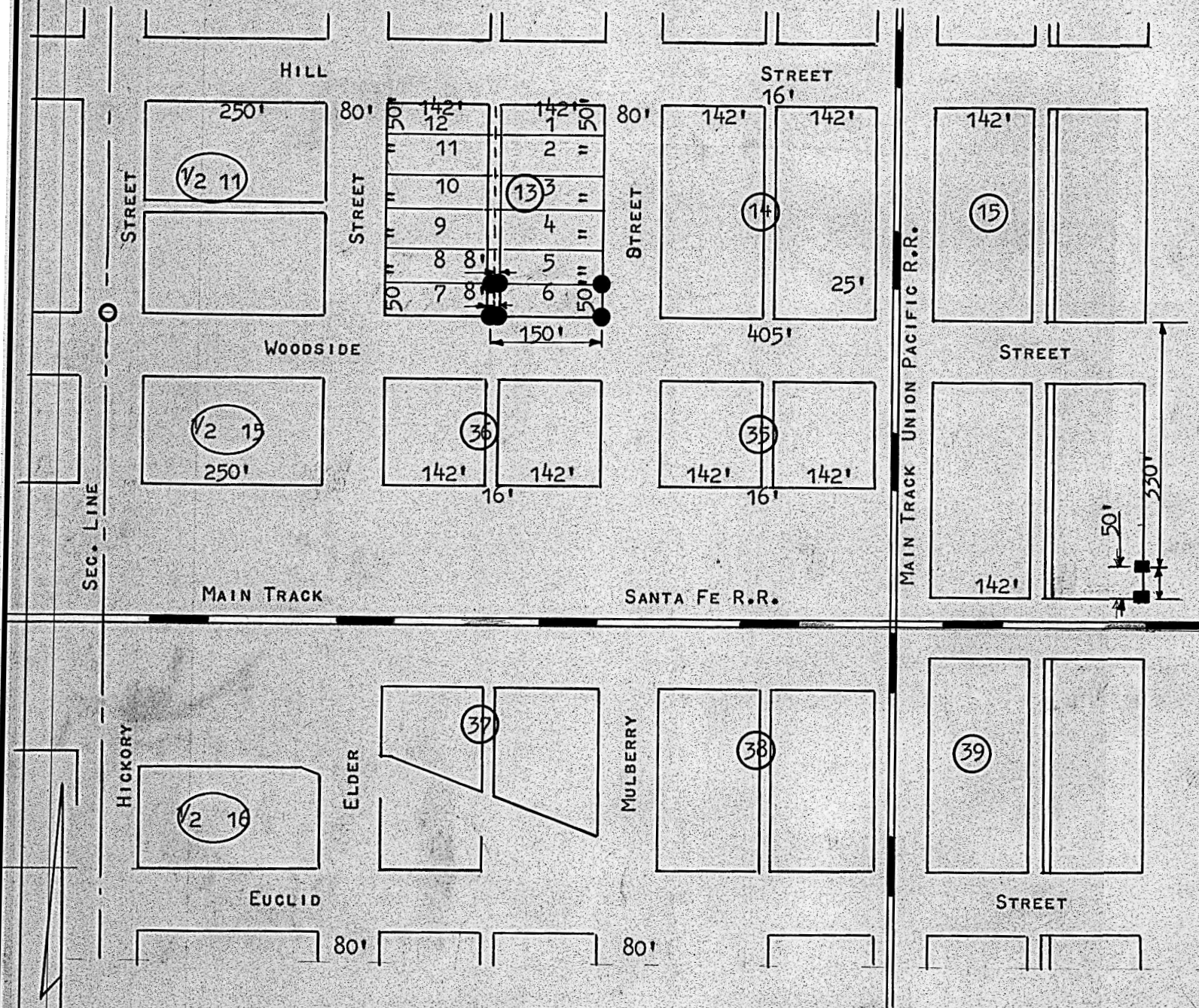


A SURVEY OF LOT 6 BLOCK 13 CASSEL ADD.  
TO THE CITY OF MCPHERSON



- RAILROAD R/W MAKER USED THIS SURVEY.
- PIN FOUND USED FOR NORTH SIDE OF WOODSIDE.
- 3/4" PIPE SET THIS SURVEY

STATE OF KANSAS )  
COUNTY OF MCPHERSON ) SS

I, FRANCIS D. WAGNER COUNTY ENGINEER OF MCPHERSON COUNTY, KANSAS,  
DO HEREBY CERTIFY THAT I DID CAUSE TO BE DONE ON THE 24TH DAY OF  
JULY, 1961, A SURVEY OF LOT 6 BLOCK 13 CASSEL ADDITION TO THE CITY  
OF MCPHERSON, KANSAS, AND THAT THE ACCOMPANYING PLAT IS A TRUE  
EXHIBIT OF SAID SURVEY.

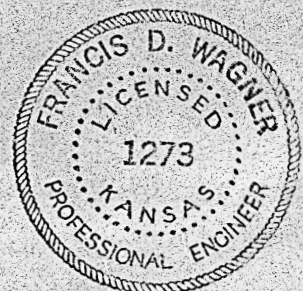
*Francis D. Wagner*

FRANCIS D. WAGNER  
COUNTY ENGINEER  
MCPHERSON COUNTY

JULY 27, 1961

NOTE: THE ALLEY OF BLOCK 13 HAS BEEN VACATED.

MICROFILM



County